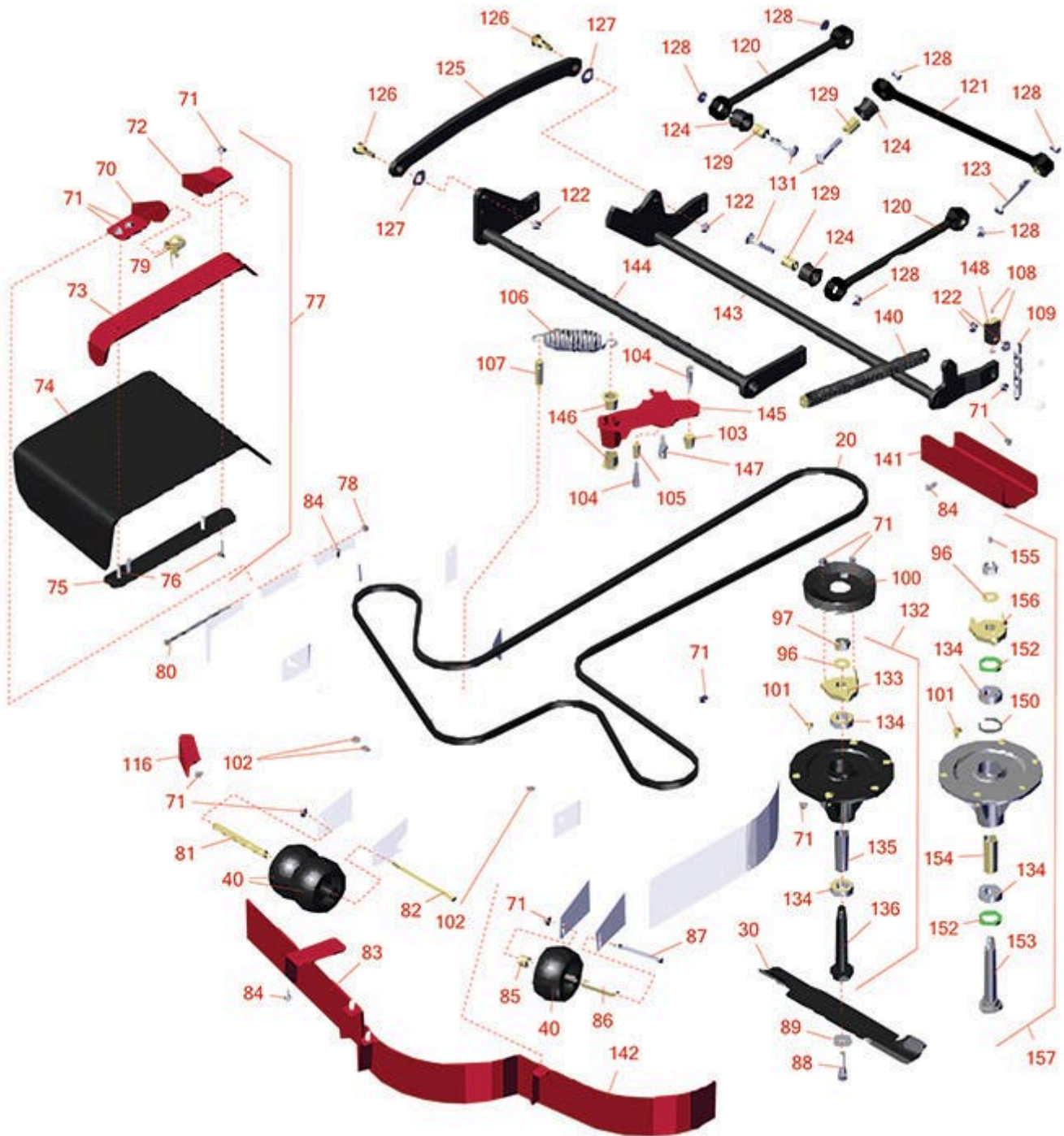




Replaces Toro Z Master Professional 5000 Parts

Zero Turn Mower with 52in deck - Model 74955
52in Deck Parts



All original equipment manufacturers names and part numbers are used for identification purposes only, and we are in no way implying that our products are original equipment parts. Prices subject to change without notice.



Replaces Toro Z Master Professional 5000 Parts

Zero Turn Mower with 52in deck - Model 74955
52in Deck Parts



Item No	R&R Part No.	OEM Part No.	Description	Qty Req	Order Quantity
Belts					
20	R115-7426	115-7426	Belt- V	1	
Rotary Blades					
30	R105-7781-03	105-7781-03, 140-1242	Mower Blade - 18 in High-Flow	3	
30	RRB3065-1802	105-7781-03, 1056-7781-03	Mower Blade - High-Lift 18 x 2.5in x 5/8 Mt Hole	3	
<i>Detail Description: R&R Products rotary blades are manufactured in the USA with superior alloy steel and hardened for extended life. Lifetime guaranteed against defects in material and workmanship.:</i>					
Wheels					
40	R68-2730	1-603299, 68-2730	Wheel - Anti Scalp	3	
Other Parts Available					
70	R106-3253-01	106-3253-01, 108-7766-03	Plate-Hinge, Front	1	
71	R104-8301	104-8301, 104-9301, 109-6658, 133-7570	Locknut - 3/8-16 Nylon Flanged	44	
72	R108-4059-01	108-4059-01, 108-7767-03	Plate-Hinge, Rear	1	
73	R106-3246-01	106-3246-01	Deflector	1	
74	R151416	108-5029, 110-0759, 151416	Deflector - Long	1	
75	R106-3248-03	106-3248-03	Strap - Discharge	1	

All original equipment manufacturers names and part numbers are used for identification purposes only, and we are in no way implying that our products are original equipment parts. Prices subject to change without notice.



Replaces Toro Z Master Professional 5000 Parts

Zero Turn Mower with 52in deck - Model 74955
52in Deck Parts



Item No	R&R Part No.	OEM Part No.	Description	Qty Req	Order Quantity
76	R3231-4	01-157-0440, 01-173-0612, 3231-4	Bolt - Carriage 3/8-16 x 1-1/2	4	
77	R108-2792	108-2792	Rubber Deflector Assy	1	
78	R3296-47	3296-47	Locknut - 5/16-18 Jam Nyloc	1	
79	R108-4052	108-4052	Spring - Torsion	1	
80	R322-50	322-50	Bolt - Hx HD 5/16-18 x 7 1/2	1	
81	R98-5967	98-5967	Spacer-Wheel	1	
82	R108-5388	108-5388	Bolt - Hx HD 3/8-16 x 7 1/2	1	
83	R115-7455-01	115-7455-01	Baffle Assy	1	
84	R3231-27	3231-1, 3231-27	Bolt - Carriage 3/8-16 x 7/8	1	
85	R98-7913	98-7913	Spacer - Tube	1	
86	R98-7912	98-7912	Bushing - Spanner Wheel	1	
87	R323-23	01-150-0810, 01-178-0636, 20-60-AGD, 323-23	Bolt - Hex HD 3/8-16 x 4-1/2	1	
88	R51-4060	51-4060	Bolt - Blade	3	
89	R103-0865	103-0865	Washer - Blade Bolt HD	3	
96	R92-5836	92-5836	Flat Washer - Hardened	3	
97	R3296-67	3296-67	Locknut - 3/4-16 Heavy Jam RH Thread	3	
100	R115-7450	115-7450	Pulley - 6.75 in Dia with 1.75 Bore	3	
101	R114-8195	114-8195, R & R ONLY	Bolt- Ribbed Neck	18	

All original equipment manufacturers names and part numbers are used for identification purposes only, and we are in no way implying that our products are original equipment parts. Prices subject to change without notice.



Replaces Toro Z Master Professional 5000 Parts

Zero Turn Mower with 52in deck - Model 74955
52in Deck Parts



Item No	R&R Part No.	OEM Part No.	Description	Qty Req	Order Quantity
102	R32128-43	30-8990, 32128-43, 3290-357	Nut - Flanged Whiz - 3/8-16	3	
103	R112-4212	112-4212	Mount-Pulley	1	
104	R323-11	01-150-1440, 01-178-0618, 20-52-AD, 3224-7, 323-11	Bolt - 3/8-16 x 2 1/4 GR5	2	
105	R104-0151	104-0151	Spacer	1	
106	R116-6317	116-0133, 116-6317	Spring - Extension	1	
107	R114-5867	114-5867	Anchor - Spring - Tall	1	
108	RP457-2	01-191-0518, 22-12-AJK, 3218-2, 513299, P457-2	Nut - Jam 5/16-18 Zinc	8	
109	R1-633447	1-633447	Chain - Deck Lift	4	
116	R107-8541-01	107-8541-01	Baffle - Discharge	1	
120	R109-7952	109-7952	Deck Strut Assy	2	
121	R109-5013	109-5013	Panhard Rod Assy	1	
122	R32128-37	32128-37	Nut - 7-16-14 Hx Serr Fl	10	
123	R325-17	01-150-0640, 01-150-0850, 01-178-0832, 01-178-0836, 20-97-AGD, 325-17, 325-18, 48-9260	Bolt - Hex Head	1	
124	R109-5009	109-5009	Bushing - Suspension - Rubber	6	

All original equipment manufacturers names and part numbers are used for identification purposes only, and we are in no way implying that our products are original equipment parts. Prices subject to change without notice.



Replaces Toro Z Master Professional 5000 Parts

Zero Turn Mower with 52in deck - Model 74955
52in Deck Parts



Item No	R&R Part No.	OEM Part No.	Description	Qty Req	Order Quantity
125	R116-0797-03	116-0797-03	Link-Lift - Deck	1	
126	R116-0780	116-0780	Bolt - Hx HD Fl Shoulder	2	
127	R453022	01-166-0480, 01-166-1220, 21-3880, 217-21, 30-8550, 30-9110, 3256-28, 3256-44, 46-9030, Mar-71	Washer - 3/4 SAE	2	
128	R32128-23	32128-23, 3218-23, 99-5107	Nut - Lock Hex Flanged 1/2-13	6	
129	R109-5010	109-5010	Spacer	6	
131	R3233-34	3233-34	Carriage Bolt - 1/2-13 x 2 1/2 Grade 5	3	
132	R127-0560	127-0560	Spindle Assy - No Grease	3	
133	R127-0557	127-0557	Spindle Hub Assy w/Studs	3	
134	R116-0720	116-0720	Bearing - Ball - Special Triple Seal	6	
135	R127-0554	127-0554	Spacer - Bearing	3	
136	R127-0556	127-0556	Shaft- Spindle	3	
140	R116-0886	116-0886	Spring - Extension	1	
141	R121-7975-01	121-7975-01	Plate - Skid	1	
142	R115-7461-01	115-7461-01	Baffle Assy	1	
143	R116-0459-03	116-0459-03	Lift - Rear Deck	1	

All original equipment manufacturers names and part numbers are used for identification purposes only, and we are in no way implying that our products are original equipment parts. Prices subject to change without notice.



Replaces Toro Z Master Professional 5000 Parts

Zero Turn Mower with 52in deck - Model 74955
52in Deck Parts



Item No	R&R Part No.	OEM Part No.	Description	Qty Req	Order Quantity
144	R126-2475-03	116-2217-03, 126-2475-03	Decklift - Front	1	
145	R114-5870	114-5870	Idler Arm Assy with Bushings	1	
146	R1-303514	1-303514	Bearing - Flanged	2	
147	R132-4724	132-4724	Pin - Spring Anchor	1	
148	R109-9066	109-9066	Yoke - Adjust - Deck	4	
150	R119-8532	114-8161, 119-8532	Snap Ring	3	
152	R253-133	253-133	Seal - Oil	6	
153	R119-8527	119-1851, 119-8527	Spindle Shaft and Zerk Assy	3	
154	R117-6184	117-6184	Spacer	3	
155	R471219	30-8360, 302-2, 302-24, 302-31, 302-52	Zerk - Grease	3	
156	R117-6172	117-6172	Spindle Hub Assy w/Studs	3	
157	R119-8560	117-6157, 117-6158, 119-8560	Spindle Assy	3	

All original equipment manufacturers names and part numbers are used for identification purposes only, and we are in no way implying that our products are original equipment parts. Prices subject to change without notice.