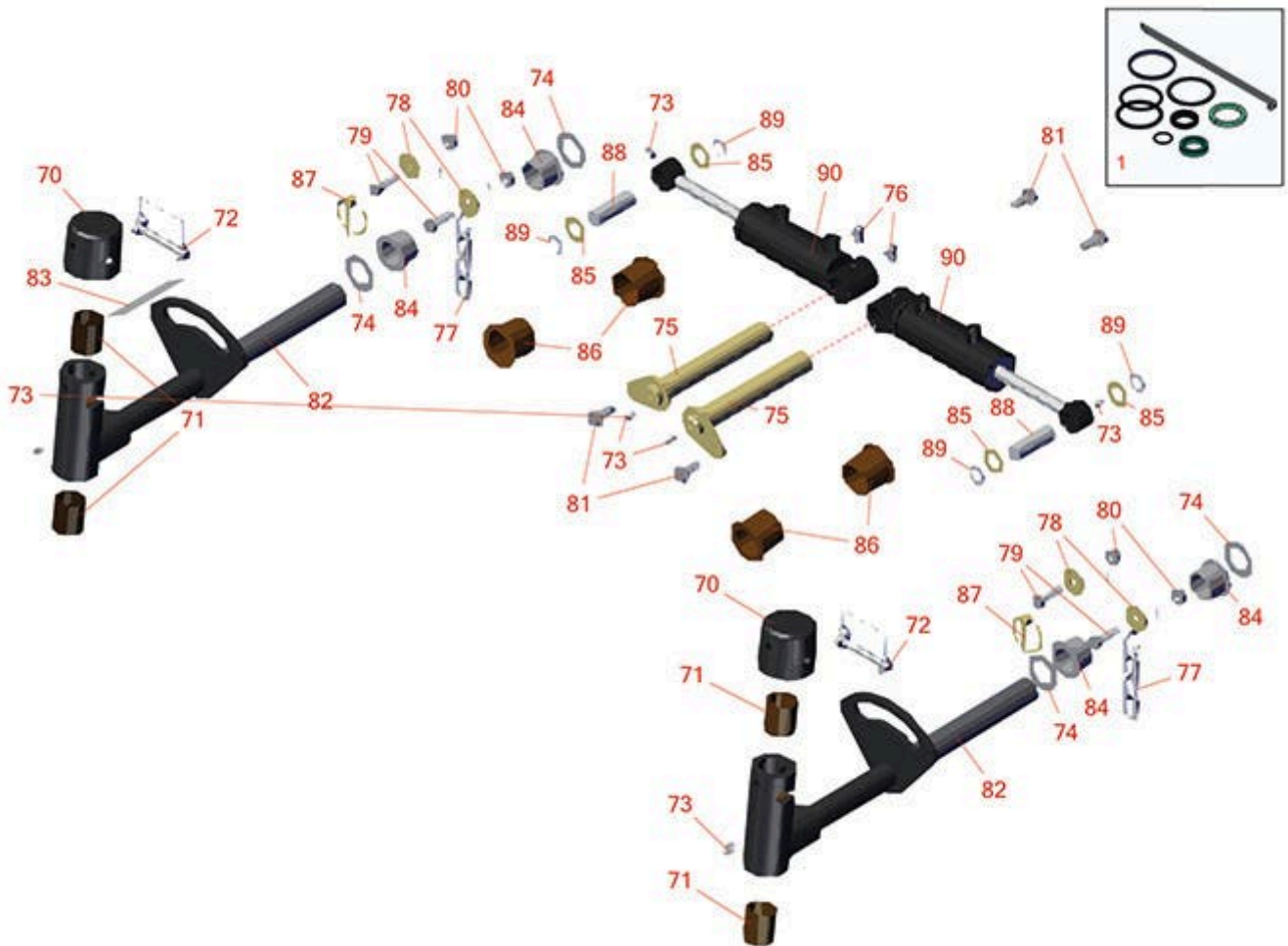




# Replaces Toro Reelmaster 3555-D Parts

Traction Unit

2 & 3 Lift Arm & Hydraulics



All original equipment manufacturers names and part numbers are used for identification purposes only, and we are in no way implying that our products are original equipment parts. Prices subject to change without notice.



# Replaces Toro Reelmaster 3555-D Parts

Traction Unit

2 & 3 Lift Arm & Hydraulics



Item No	R&R Part No.	OEM Part No.	Description	Qty Req	Order Quantity
---------	--------------	--------------	-------------	---------	----------------

## Overhaul Kits

1	<b>R86-7330</b>	75-2140, 86-7330	Overhaul Kit - Cylinder	2	
---	-----------------	---------------------	-------------------------	---	--

*Tech Note: Fits R93-9310 Cylinder:*

## Other Parts Available

70	<b>R107-4027</b>	107-4027	Cap - Pivot Yoke	2	
----	------------------	----------	------------------	---	--

71	<b>R121-3187</b>	121-3187	Bushing	4	
----	------------------	----------	---------	---	--

72	<b>R107-7400</b>	107-7400	Pin - Lynch	2	
----	------------------	----------	-------------	---	--

73	<b>R302-5</b>	21-6010, 302-11, 302-37, 302-47, 302-5, 302-57, 302-58, 302-6, 31-0300, 32-9660, 60-0800, 62-3880, 92-4181	Fitting - Grease	4	
----	---------------	--	------------------	---	--

74	<b>R120-2183</b>	120-2183	Washer - Thrust	4	
----	------------------	----------	-----------------	---	--

75	<b>R120-2129</b>	120-2129	Pin Assy	2	
----	------------------	----------	----------	---	--

*Tech Note: Ser # 316000001-316999999:*

75	<b>R120-2127</b>	120-2127	Pin Assy	2	
----	------------------	----------	----------	---	--

*Tech Note: Ser# 316999999-401400000:*

76	<b>R323016</b>	302-33, 323016	Zerk - Grease	2	
----	----------------	-------------------	---------------	---	--

77	<b>R84-2450</b>	84-2450	Chain - Straight 4	2	
----	-----------------	---------	--------------------	---	--

All original equipment manufacturers names and part numbers are used for identification purposes only, and we are in no way implying that our products are original equipment parts. Prices subject to change without notice.



# Replaces Toro Reelmaster 3555-D Parts

*Traction Unit*

*2 & 3 Lift Arm & Hydraulics*



Item No	R&R Part No.	OEM Part No.	Description	Qty Req	Order Quantity
78	<b>R63-8410</b>	53-6380, 63-4810, 63-8410	Washer - Isolator Bushing	4	
79	<b>R400264</b>	01-150-0180, 01-178-0610, 20-48-AD, 20-48-AGD, 32-9160, 3224-3, 323-29, 323-7, 400264, 908035P	Bolt - Hex HD 3/8-16 x 1-1/4	4	
80	<b>R104-8301</b>	104-8301, 104-9301, 109-6658, 133-7570	Locknut - 3/8-16 Nylon Flanged	4	
81	<b>R32144-14</b>	32104-32, 32104-49, 32144-14	Bolt - Hex Washer 5/16-18 x 5/8	4	
82	<b>R127-8477</b>	127-8477	Pivot Yoke Assy	2	
83	<b>R110-9642</b>	110-9642	Decal	2	
84	<b>R121-7863</b>	121-7863	Bushing	4	
85	<b>R3-6498</b>	3--6498, 3-6498, 47-8270	Washer - Thrust	4	
86	<b>R69-6470</b>	69-6470	Bushing - Flanged	4	
87	<b>R92-1298</b>	92-1298	Pin - Klik	2	
88	<b>R104-0046</b>	104-0046	Pin - Slide - Cylinder	2	
89	<b>R32120-93</b>	32120-93	Snap Ring - HD	4	
90	<b>R93-9310</b>	108-4436, 75-0780, 93-9310	Hydraulic Cylinder - Front C/Rear	2	

All original equipment manufacturers names and part numbers are used for identification purposes only, and we are in no way implying that our products are original equipment parts. Prices subject to change without notice.



# Replaces Toro Reelmaster 3555-D Parts

*Traction Unit*

*2 & 3 Lift Arm & Hydraulics*



All original equipment manufacturers names and part numbers are used for identification purposes only, and we are in no way implying that our products are original equipment parts. Prices subject to change without notice.