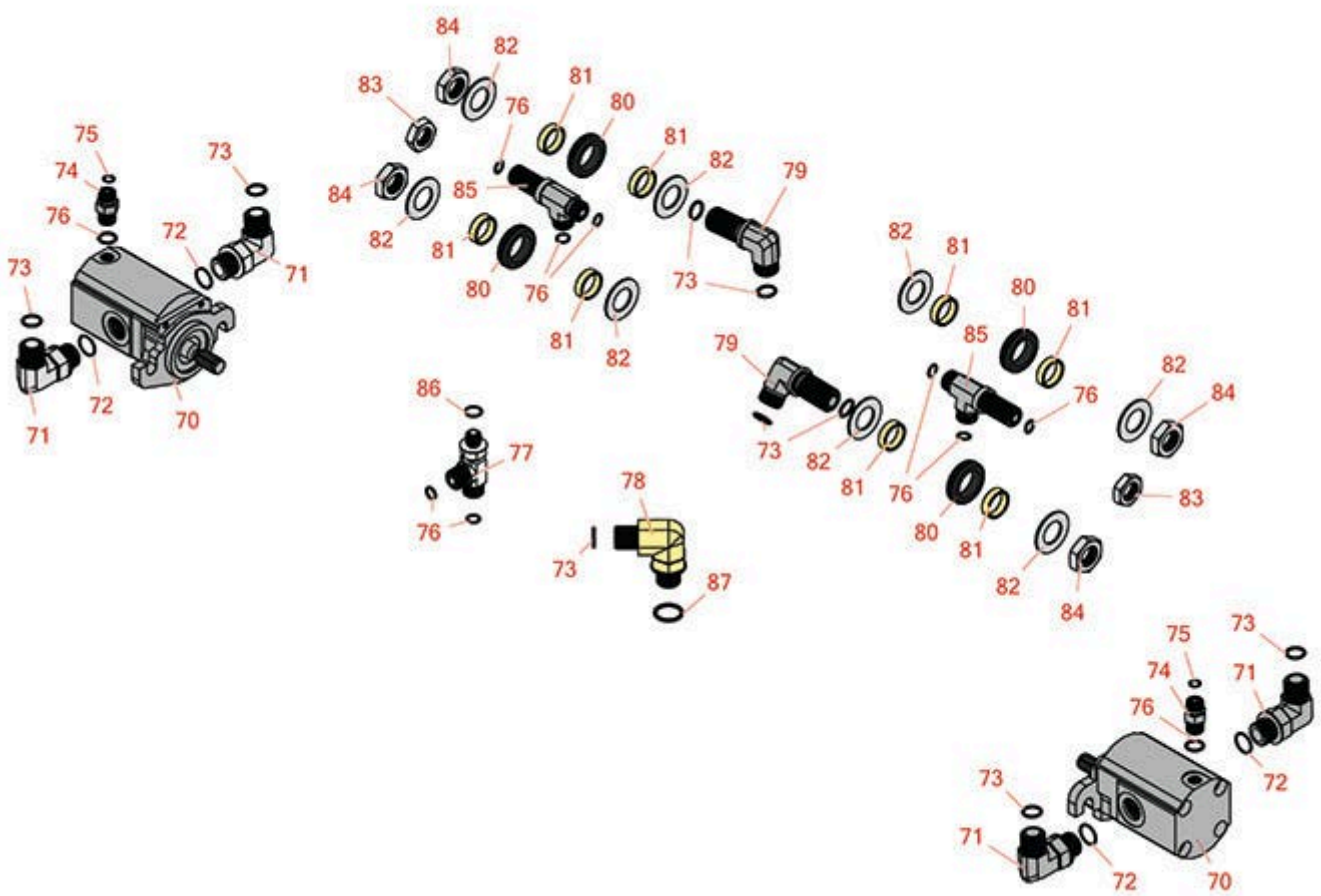




Replaces Toro Reelmaster 3555-D Parts

Traction Unit

2 & 3 Reel Motors & Hydraulics



All original equipment manufacturers names and part numbers are used for identification purposes only, and we are in no way implying that our products are original equipment parts. Prices subject to change without notice.



Replaces Toro Reelmaster 3555-D Parts

Traction Unit

2 & 3 Reel Motors & Hydraulics



Item No	R&R Part No.	OEM Part No.	Description	Qty Req	Order Quantity
70	R120-2072	100-6426, 108-6487, 112-9200, 120-2072, 93-1375	Hydraulic Gear Motor	2	
71	R340-98	340-98	Hydraulic Fitting	4	
72	R237-79	237-79	O-Ring	12	
73	R237-30	23-6320, 237-30	O-Ring - Seal	9	
74	R340-92	340-92	Hydraulic Fitting - Striaight	2	
75	R237-21	237-21, 327-21	O-Ring	2	
76	R237-22	107-8844, 237-22, 237-78	O-Ring	2	
77	R340-86	340-86	Fitting-Tee	1	
78	R340-105	340-105	Hydraulic Fitting	1	
79	R93-9151	93-9151	Hydraulic Fitting	2	
80	R240-5	240-5	Grommet - Rubber	4	
81	R69-8960	69-8960	Spacer	8	
82	R69-8930	69-8930	Washer	8	
83	R340-70	340-70	Nut - Lock	2	
84	R340-127	340-127	Nut - Bulkhead	4	
85	R340-68	340-120, 340-68	Fitting - Tee - Bulkhead	2	
86	R237-42	237-42, 31-4160	O-Ring	1	

All original equipment manufacturers names and part numbers are used for identification purposes only, and we are in no way implying that our products are original equipment parts. Prices subject to change without notice.



Replaces Toro Reelmaster 3555-D Parts

Traction Unit

2 & 3 Reel Motors & Hydraulics



Item No	R&R Part No.	OEM Part No.	Description	Qty Req	Order Quantity
87	R237-80	237-80, 327-80	O-Ring	1	

All original equipment manufacturers names and part numbers are used for identification purposes only, and we are in no way implying that our products are original equipment parts. Prices subject to change without notice.