

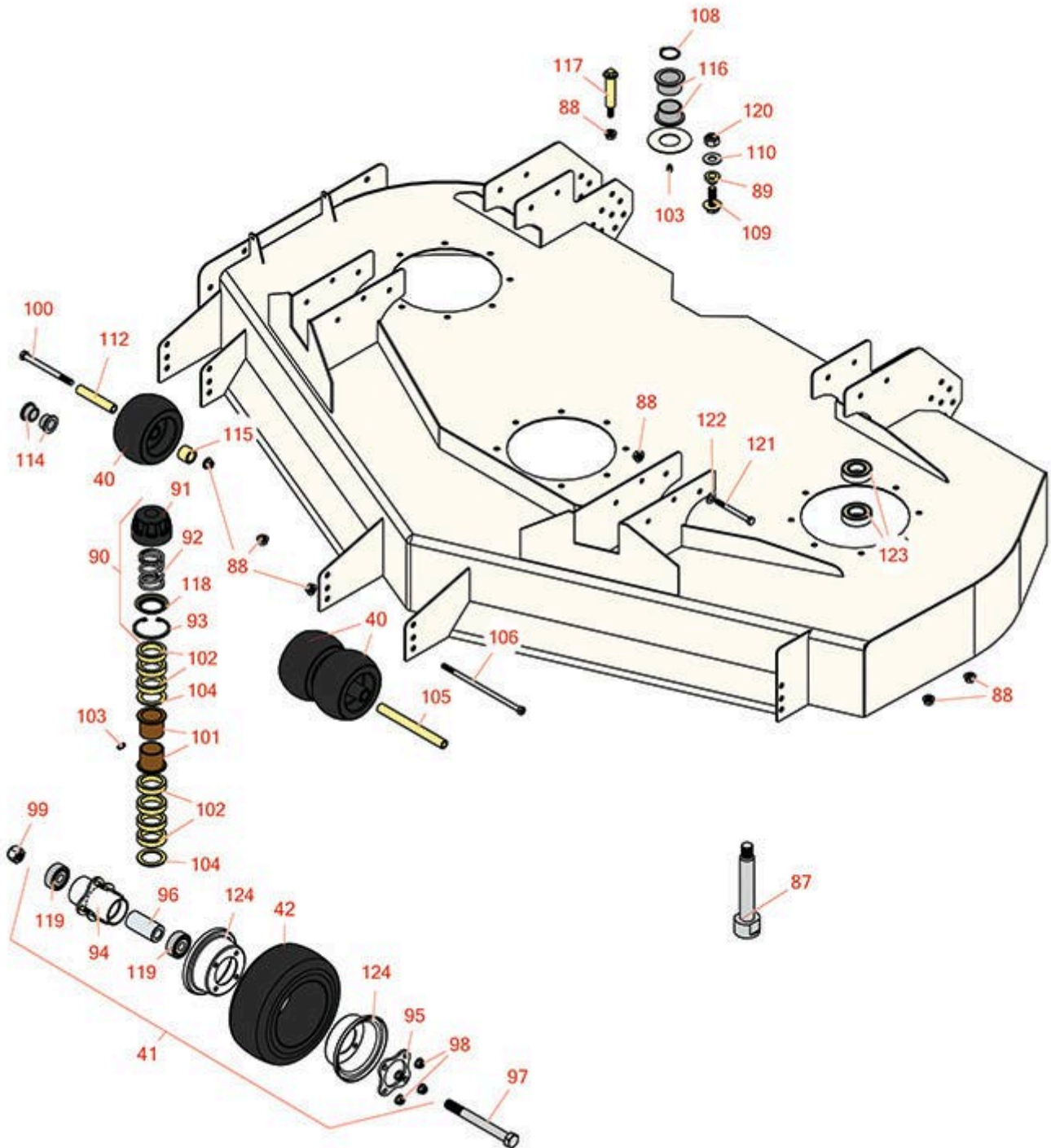


Replaces Toro Groundsmaster 3200

Parts

Rotary Decks

72in Rotary Deck - Model 31975



All original equipment manufacturers names and part numbers are used for identification purposes only, and we are in no way implying that our products are original equipment parts. Prices subject to change without notice.



Replaces Toro Groundsmaster 3200

Parts

Rotary Decks

72in Rotary Deck - Model 31975



Item No	R&R Part No.	OEM Part No.	Description	Qty Req	Order Quantity
40	R68-2730	1-603299, 68-2730	Wheel - Anti Scalp	3	
41	R137-5529	137-5529, 93-5974, 93-9574, `137-5529	Wheel Assy - Foam Filled 8x3.5-4SM	2	
42	R150615	136-4424, 137-5924	Tire - Foam Filled 8-3.5 x 4 Sm 4 Ply	2	
Other Parts Available					
87	R138-6045	138-6045	Shaft - Spindle	3	
88	R104-8301	104-8301, 104-9301, 109-6658, 133-7570	Locknut - 3/8-16 Nylon Flanged	20	
89	R108-1924	108-1924	Spacer-Idler	1	
90	R92-9727	92-9727	Cap Assy - HOC	2	
91	R92-8861	92-5582, 92-8861	Cap - HOC	2	
92	R92-9726	92-9726	Spring - Compression	2	
93	R92-5581	92-5581	Ring - Retaining	2	
94	R93-5980	93-4238, 93-5980	Hub Assy - w/o Bearings/Spacer	2	
95	R93-4242	93-4242	Plate - Caster Wheel	2	
96	R93-4241	93-4241	Spacer - Caster Wheel	2	
97	R327-24	327-24	Bolt - Hex HD 5/8-11 x 6	2	
98	R32128-16	32128-16	Locknut - 5/16-24 Flanged Top	8	
99	R3296-53	3296-53	Locknut - 5/8-11 ESNA Yellow	2	

All original equipment manufacturers names and part numbers are used for identification purposes only, and we are in no way implying that our products are original equipment parts. Prices subject to change without notice.



Replaces Toro Groundsmaster 3200

Parts

Rotary Decks

72in Rotary Deck - Model 31975



Item No	R&R Part No.	OEM Part No.	Description	Qty Req	Order Quantity
100	R323-23	01-150-0810, 01-178-0636, 20-60-AGD, 323-23	Bolt - Hex HD 3/8-16 x 4-1/2	1	
101	R69-6470	69-6470	Bushing - Flanged	4	
102	R69-1510	69-1510	Spacer - 1/2 Caster Fork	14	
103	R302-5	21-6010, 302-11, 302-37, 302-47, 302-5, 302-57, 302-58, 302-6, 31-0300, 32-9660, 60-0800, 62-3880, 92-4181	Fitting - Grease	3	
104	R69-6860	69-6860	Washer - 1/8 - Caster Wheel	4	
105	R98-5967	98-5967	Spacer-Wheel	1	
106	R108-5388	108-5388	Bolt - Hx HD 3/8-16 x 7 1/2	1	
108	R32120-84	32120-84	Ring - Snap	1	
109	R100-6116	100-6116	Bolt - 1/2-13 x 1 1/2 Flanged Hx HD Gr 8	1	
110	R106-9888	106-9888	Washer-Flat	1	
112	R98-7912	98-7912	Bushing - Spanner Wheel	1	
114	R93-2877	93-2877	Bushing - Flanged	2	
115	R98-7913	98-7913	Spacer - Tube	1	
116	R93-4510	93-4510	Bushing	2	
117	R112-3977	112-3977	Bolt- Shoulder	1	

All original equipment manufacturers names and part numbers are used for identification purposes only, and we are in no way implying that our products are original equipment parts. Prices subject to change without notice.



Replaces Toro Groundsmaster 3200 Parts

Rotary Decks
72in Rotary Deck - Model 31975



Item No	R&R Part No.	OEM Part No.	Description	Qty Req	Order Quantity
118	R92-5583	92-5583	Washer- Cap	2	
119	R108-9017	108-9017, 120-3366	Bearing-Stainless	4	
120	R3296-25	30-3380, 32127-21, 32127-31, 3290-160, 3290-33, 3296-13, 3296-25, 3296-45, 329645	Locknut - 1/2-13 Heavy ESNA	1	
121	R400274	01-178-0626, 112-7161, 3224-11, 400274	Bolt - Hex HD 3/8-16 x 2-1/2 GR5	6	
122	R453011	01-166-0100, 01-166-0120, 01-166-0270, 01-166-0500, 01-166-0600, 01-166-0620, 132-4593, 2356-3, 237-12, 24-10-AD, 24-11-AD, 24-11-BD, 24-12-AD, 24-12-BD, 30-9310, 32-8190, 3256-24, 3256-3, 3256-36, 3256-4, 453011, 47-9950, 48-9220, 513458, 7-0052	Washer - Flat 3/8 SAE Y/Zinc	6	
123	R116-0720	116-0720	Bearing - Ball - Special Triple Seal	6	

All original equipment manufacturers names and part numbers are used for identification purposes only, and we are in no way implying that our products are original equipment parts. Prices subject to change without notice.



Replaces Toro Groundsmaster 3200

Parts

Rotary Decks

72in Rotary Deck - Model 31975



Item No	R&R Part No.	OEM Part No.	Description	Qty Req	Order Quantity
124	R95-2741	137-5552, 95-2741	Rim - Wheel Half w/o Valve Hole	4	

All original equipment manufacturers names and part numbers are used for identification purposes only, and we are in no way implying that our products are original equipment parts. Prices subject to change without notice.