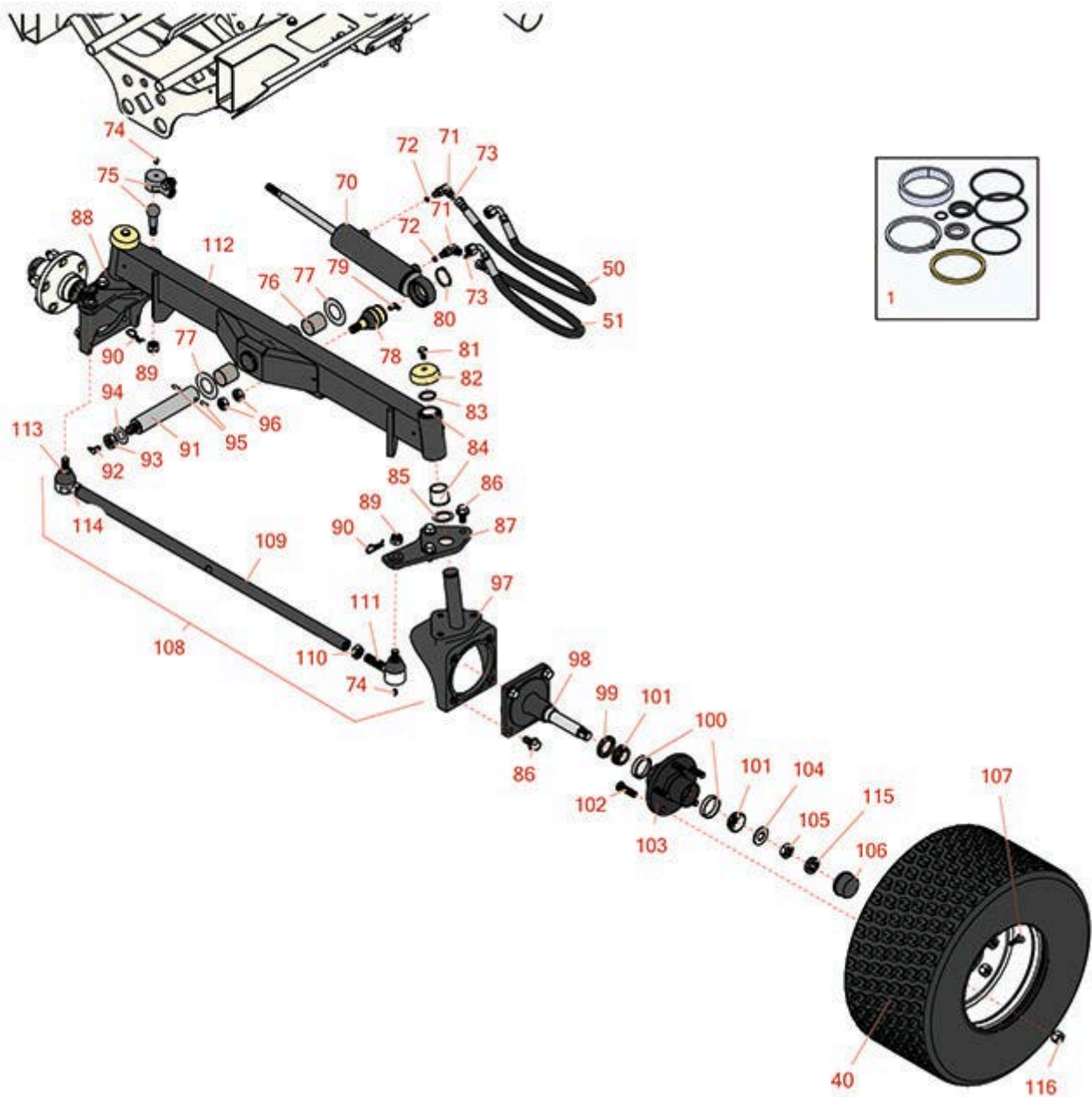




Replaces Toro Reelmaster 5410G Parts

Traction Unit - Models 03608 & 03673

Rear Axle



All original equipment manufacturers names and part numbers are used for identification purposes only, and we are in no way implying that our products are original equipment parts. Prices subject to change without notice.



Replaces Toro Reelmaster 5410G Parts

Traction Unit - Models 03608 & 03673

Rear Axle



| Item No | R&R Part No. | OEM Part No. | Description | Qty Req | Order Quantity |
|---------|--------------|--------------|-------------|---------|----------------|
|---------|--------------|--------------|-------------|---------|----------------|

Overhaul Kits and Service Tools

| | | | | | |
|---|------------------|----------|-----------------------------------|---|--|
| 1 | R110-6461 | 110-6461 | Seal Kit -Fits R107-4458 Cylinder | 1 | |
|---|------------------|----------|-----------------------------------|---|--|

Tires

| | | | | | |
|----|------------------|-----------------------|--|---|--|
| 40 | RCT575315 | 117-5125, 121-7924 | Tire - 20x12.00-10 Nhs (4 Ply) Carlisle Turf Trac R/S | 2 | |
|----|------------------|-----------------------|--|---|--|

Detail Description: The Turf Trac R/S tire offers all-around best performance in our residential product line. Applications include grounds care equipment, zero turn mowers and utility vehicles.:

| | | | | | |
|----|------------------|--|--|---|--|
| 40 | RCT511257 | | Tire - 20x12.00-10 Nhs (4 Ply) Carlisle Turf Master | 2 | |
|----|------------------|--|--|---|--|

Detail Description: The Carlisle Turf Master tire is a professional-grade tire known for its durability, stability, and traction. With its contoured shoulder protection, deep tread lugs, and durable compound, the Turf Master tire delivers reliable performance for ZTRs and professional-grade mowers. Whether you're maintaining a large lawn or operating a commercial landscaping business, the Turf Master tire is designed to meet your high standards and exceed your expectations.:

Hoses

| | | | | | |
|----|------------------|----------|---------------------|---|--|
| 50 | R110-0973 | 110-0973 | Hose Asy | 1 | |
| 51 | R110-0928 | 110-0928 | Hydraulic Hose Assy | 1 | |

Other Parts Available

| | | | | | |
|----|------------------|--------------------------------|----------------------------|---|--|
| 70 | R107-4458 | 107-4458, 110-9035 | Hydraulic Cylinder | 1 | |
| 71 | R340-132 | 340-132 | Hydraulic Fitting - 90 Deg | 2 | |
| 72 | R237-22 | 107-8844, 237-22, 237-78 | O-Ring | 2 | |
| 73 | R237-21 | 237-21, 327-21 | O-Ring | 2 | |

All original equipment manufacturers names and part numbers are used for identification purposes only, and we are in no way implying that our products are original equipment parts. Prices subject to change without notice.



Replaces Toro Reelmaster 5410G Parts

Traction Unit - Models 03608 & 03673

Rear Axle



| Item No | R&R Part No. | OEM Part No. | Description | Qty Req | Order Quantity |
|---------|--------------|--|--|---------|----------------|
| 74 | R302-5 | 21-6010, 302-11, 302-37, 302-47, 302-5, 302-57, 302-58, 302-6, 31-0300, 32-9660, 60-0800, 62-3880, 92-4181 | Fitting - Grease | 5 | |
| 75 | R106-6895-03 | 106-6895-03, 69-9810, 69-9810-03 | Ball Joint Assy | 1 | |
| 76 | R99-6964 | 99-6964 | Bushing - Axle | 2 | |
| 77 | R99-8432 | 99-8432 | Washer - Thrust | 2 | |
| 78 | R106-6774 | 106-6774, 92-5838, 92-5838-01 | Ball Joint | 1 | |
| 79 | R302-40 | 302-13, 302-40 | Fitting - Grease | 1 | |
| 80 | R32151-104 | 32151-104 | Ring - Retaining, Ex | 1 | |
| 81 | R3234-1 | 321-11, 3234-1 | Bolt - Flanged Serrated Hex HD 3/8-16 x 3/4 | 2 | |
| 82 | R69-8890 | 69-8890 | Cap-Spindle | 2 | |
| 83 | R32151-77 | 32151-77 | Ring - Retaining | 2 | |
| 84 | R104-0015 | 104-0015, 104-8339 | Bushing - Flanged | 4 | |
| 85 | R76-2980 | 76-2980 | Washer - Thrust | 2 | |

All original equipment manufacturers names and part numbers are used for identification purposes only, and we are in no way implying that our products are original equipment parts. Prices subject to change without notice.



Replaces Toro Reelmaster 5410G Parts

Traction Unit - Models 03608 & 03673

Rear Axle



| Item No | R&R Part No. | OEM Part No. | Description | Qty Req | Order Quantity |
|---------|---------------------|--|-----------------------------------|---------|----------------|
| 86 | R3234-6 | 32144-13, 3234-6, 3434-6 | Bolt - Hex HD Flanged | 14 | |
| 87 | R110-5297-03 | 110-5297-03 | Link - Drag LH | 1 | |
| 88 | R110-5295-03 | 110-5295-03 | Link - Drag - RH | 1 | |
| 89 | R105-7941 | 105-7941 | Nut - Hex - Slotted | 3 | |
| 90 | R3272-12 | 01-151-0090, 28-19-D, 3272-12 | Pin - Cotter 1/8 x 1-1/4 | 5 | |
| 91 | R140-6101 | 140-6101, 98-8173, 98-8173-03 | Pivot Pin - Rear Lift Arm | 1 | |
| 92 | R323016 | 302-33, 323016 | 1/8"-NPT 90 Degree Grease Fitting | 1 | |
| 93 | R444742 | 32146-20, 9150906, 915090P | Nut - 3/4-16 Gripco Centerlock | 1 | |
| 94 | R71-4540 | 71-4540 | Washer - Thrust | 1 | |
| 95 | R32121-32 | 01-153-0180, 32121-32 | Pin - Roll 1/4 x 1-3/4 | 1 | |
| 96 | R443828 | 01-191-1018, 3214, 3220-6, 443828, 915089P | Nut - 5/8-18 Hex | 2 | |
| 97 | R107-4517-03 | 107-4517-03 | Housing - Motor | 2 | |
| 98 | R117-8958 | 117-8958 | Spindle | 2 | |
| 99 | R112-1690 | 112-1690 | Seal - Hub - 1 1/4" ID | 2 | |

All original equipment manufacturers names and part numbers are used for identification purposes only, and we are in no way implying that our products are original equipment parts. Prices subject to change without notice.



Replaces Toro Reelmaster 5410G Parts

Traction Unit - Models 03608 & 03673

Rear Axle



| Item No | R&R Part No. | OEM Part No. | Description | Qty Req | Order Quantity |
|---------|---------------------|--|---------------------------------|---------|----------------|
| 100 | R254-72 | 01-103-0050, 01-103-0120, 01-103-0140, 1-543508, 254-71, 254-72, 40439, 62-3340, 99-4511 | Cup - Bearing | 4 | |
| 101 | R254-94 | 1-543509, 254-94, 32-8090, 32-8240, 32-9640, 40440, 62-3330 | Tapered Bearing Cone | 4 | |
| 102 | R114-3918 | 1-633926, 114-3918 | Stud - Wheel - 1/2-20 x 1 15/16 | 10 | |
| 103 | R121-5631 | 120-6255, 121-5621, 121-5631 | Hub Assy | 2 | |
| 104 | R117-8259 | 117-8259 | Washer-Spindle | 2 | |
| 105 | R117-3290 | 117-3290 | Nut - Hex | 2 | |
| 106 | R241-119 | 01-269-0070, 01-269-0280, 01-286-0040, 241-119, 30-9930, 40438 | Cap-Dust | 2 | |
| 107 | R232-27 | 232-27, 232-31 | Stem - Valve w/ Cap | 2 | |
| 108 | R110-5334-03 | 110-5334-03 | Tie Rod Assy | 1 | |
| 109 | R110-5335 | 110-5335 | Tie Rod | 1 | |
| 110 | R110-5337 | 110-5337 | Nut - Jam 11/16-18 LH | 2 | |

All original equipment manufacturers names and part numbers are used for identification purposes only, and we are in no way implying that our products are original equipment parts. Prices subject to change without notice.



Replaces Toro Reelmaster 5410G Parts

Traction Unit - Models 03608 & 03673

Rear Axle



| Item No | R&R Part No. | OEM Part No. | Description | Qty Req | Order Quantity |
|---------|---------------------|------------------------------------|-----------------------|---------|----------------|
| 111 | R2411-46 | 2411-46, 2411-46-03 | End - Tie Rod - LH | 2 | |
| 112 | R107-4546-03 | 107-4546-03 | Axle Assy | 1 | |
| 113 | R71-4740-03 | 2411-45, 71-4740, 71-4740-03 | End - Tie Rod - RH | 1 | |
| 114 | R84-5300 | 84-5300 | Nut - Jam 11/16-18 RH | 1 | |
| 115 | R93-0307 | 93-0307 | Nut - Lock Retainer | 2 | |
| 116 | R242-50 | 242-50 | Nut - 1/2-20 Wheel | 10 | |

All original equipment manufacturers names and part numbers are used for identification purposes only, and we are in no way implying that our products are original equipment parts. Prices subject to change without notice.