

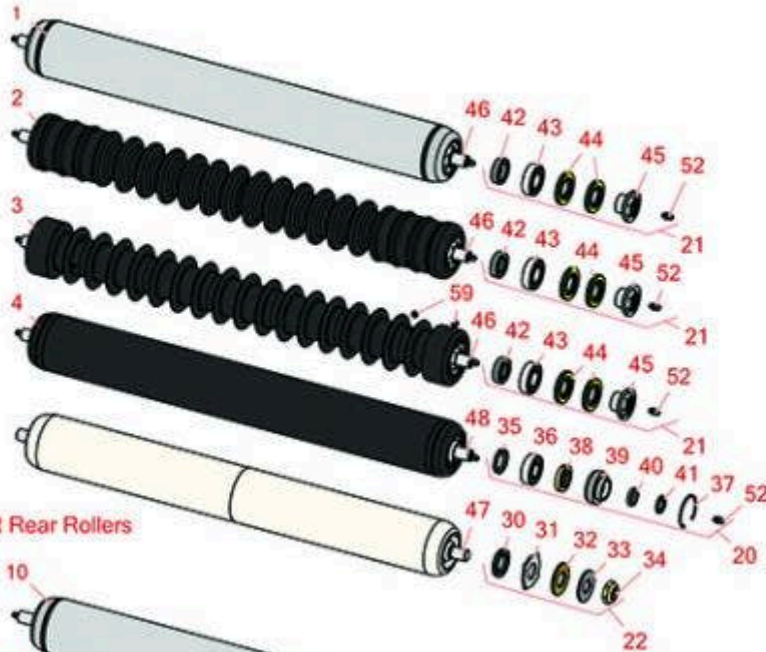


# Replaces Toro Reelmaster 5610-D Parts

DPA Cutting Unit - Models 03681, 03682, 03696 & 03697  
Front Rollers



## R&R Front Rollers



## R&R Rear Rollers



All original equipment manufacturers names and part numbers are used for identification purposes only, and we are in no way implying that our products are original equipment parts. Prices subject to change without notice.



# Replaces Toro Reelmaster 5610-D Parts

DPA Cutting Unit - Models 03681, 03682, 03696 & 03697  
Front Rollers



Item No	R&R Part No.	OEM Part No.	Description	Qty Req	Order Quantity
<b>R&amp;R Front Rollers</b>					
1	<b>R114-5412</b>	114-5412	Roller - Smooth Tubular Steel	1	
<i>Tech Note: Constructed with a through shaft, this heavy-duty roller uses greasable stainless ball bearings. (2008 &amp; Up):</i>					
2	<b>R1503915</b>	110-9608, 114-5421	Roller - Fusion Grooved UHMW Polyethylene Shoulder	1	
<i>Tech Note: Fusion Rollers combine the best features of our UHMW plastic rollers with a heavy duty internal bearing system. Machined from solid UHMW plastic that prevents build-up of debris. This roller has a patented deep groove design in t... &lt;Click Part# for more&gt;:</i>					
3	<b>R1503911</b>	110-4050, 114-5400, 114-5421	Roller - Fusion Grooved UHMW Polyethylene	1	
<i>Tech Note: Fusion Rollers combine the best features of our UHMW plastic rollers with a heavy-duty internal bearing system. Machined from solid UHMW plastic that prevents build-up of debris. This roller has a patented deep groove design and ... &lt;Click Part# for more&gt;:</i>					
4	<b>R110-9605</b>	110-9605	Roller - Smooth Tubular Steel	1	
<i>Tech Note: Constructed with a through shaft, this heavy-duty roller uses greasable ball bearings. (2006 - 2007):</i>					
<b>R&amp;R Rear Rollers</b>					
10	<b>R114-5415</b>	114-5415	Roller - Smooth Tubular Steel	1	
<i>Tech Note: Constructed with a through shaft, this heavy duty roller uses greasable stainless ball bearings. (2008 &amp; Up):</i>					
11	<b>R107-4024</b>	107-4024	Smooth Tubular Steel Roller - Long	1	
<i>Tech Note: Constructed with a through shaft, this heavy-duty roller uses greasable ball bearings. (2006 - 2007):</i>					
12	<b>R114-5417</b>	114-5417	Roller - Smooth Solid Steel	1	
<i>Tech Note: Constructed with a through shaft, this heavy-duty roller uses greasable stainless ball bearings. (2008 &amp; Up):</i>					

All original equipment manufacturers names and part numbers are used for identification purposes only, and we are in no way implying that our products are original equipment parts. Prices subject to change without notice.



# Replaces Toro Reelmaster 5610-D Parts

DPA Cutting Unit - Models 03681, 03682, 03696 & 03697  
Front Rollers



Item No	R&R Part No.	OEM Part No.	Description	Qty Req	Order Quantity
13	<b>R110-4065</b>	110-4065	Roller - Smooth Tubular Steel	1	
<i>Tech Note: Constructed with a through shaft, this heavy-duty roller uses greasable ball bearings. (2006 - 2007):</i>					
14	<b>R1503940</b>	1503940	Roller - Smooth UHMW Polyethylene	1	
<i>Tech Note: Machined from solid UHMW, this low maintenance roller uses a 1" solid stainless steel shaft and requires no grease. UHMW material prevents build-up of debris. (2006 &amp; Up):</i>					
15	<b>R1503916</b>		Roller - Fusion Smooth UHMW Polyethylene	1	
<i>Tech Note: Fusion Rollers combine the best features of our UHMW plastic rollers with a heavy duty internal bearing system. Machined from solid UHMW plastic that prevents build-up of debris. This roller has stainless precision ball bearings ... &lt;Click Part# for more&gt;:</i>					
16	<b>R1503946</b>		Roller - Smooth UHMW Polyethylene	1	
<i>Tech Note: Machined from solid UHMW, this low maintenance roller uses a 1" solid stainless steel shaft and requires no grease. UHMW material prevents build-up of debris. (2006 &amp; Up):</i>					
<b>Overhaul Kits</b>					
20	<b>R106-9606</b>	106-9606	Overhaul Kit - Roller	0	
<i>Tech Note: Include 2 ea.: R343667 Bearings, R253-70 Seals, R32120-62 Retaining Rings, R93-1251 Seals, R93-1252 Seals, R93-2931 Washers, R93-3007 Seals:</i>					
21	<b>R114-5430</b>	114-5430	Overhaul Kit - Roller	0	
<i>Tech Note: Includes 4 ea.: R112-7494 Seals; 2 ea.: R302-5 Grease Zerks, R114-3717 Seals, R112-5290 Bearings &amp; R114-3745 Locknuts:</i>					
22	<b>R101399</b>		Overhaul Kit - UHMW 2 Pc Roller	0	
<i>Tech Note: Fits all R&amp;R 2-1/2" - 3-1/2" Dia. Black UHMW Plastic Rollers that do not use ball bearings.. Includes 2 ea.: R1503230 Star Washers, R1503470 Seals, R150333 Thrust Washers, R3296-15 Locknuts, R1503471 Bronze Thrust Washers:</i>					

## Other Parts Available

All original equipment manufacturers names and part numbers are used for identification purposes only, and we are in no way implying that our products are original equipment parts. Prices subject to change without notice.



# Replaces Toro Reelmaster 5610-D Parts

DPA Cutting Unit - Models 03681, 03682, 03696 & 03697  
Front Rollers



Item No	R&R Part No.	OEM Part No.	Description	Qty Req	Order Quantity
30	<b>R1503470</b>		Seal - Inner Wiper	2	
31	<b>R1503230</b>		Washer - Thrust Outer Keyed	2	
32	<b>R1503471</b>		Washer - Thrust SAE660 Bronze	2	
33	<b>R150333</b>		Washer - Flat Keyed Outer SS	2	
34	<b>R3296-15</b>	116-7306, 32118-5, 32127-23, 32127-47, 3296-15	Locknut - 3/4-16 Nylon Jam	2	
35	<b>R93-3007</b>	93-3007	Seal	4	
36	<b>R343667</b>	109966, 251-6, 38-7820	Bearing - Ball	4	
37	<b>R32120-62</b>	32120-62	Ring - Retaining	2	
38	<b>R93-1251</b>	93-1251	Seal	2	
39	<b>R93-1252</b>	93-1252	Seal - Outer	2	
40	<b>R253-70</b>	253-70	Seal	2	
41	<b>R93-2931</b>	93-2931	Washer - Roller Seal	2	
42	<b>R114-3717</b>	114-3717	Seal	2	
43	<b>R112-5290</b>	112-5290, 251--346, 251-346, 72-5430	Bearing - Stainless	2	
44	<b>R112-7494</b>	112-7494	Seal	4	
45	<b>R114-3745</b>	114-3745, 114-5411	Locknut - Bearing - Stainless	2	
46	<b>R114-5403</b>	114-5403	Shaft - Front Roller	1	

All original equipment manufacturers names and part numbers are used for identification purposes only, and we are in no way implying that our products are original equipment parts. Prices subject to change without notice.



# Replaces Toro Reelmaster 5610-D Parts

DPA Cutting Unit - Models 03681, 03682, 03696 & 03697  
Front Rollers



Item No	R&R Part No.	OEM Part No.	Description	Qty Req	Order Quantity
47	<b>R1503923</b>		Shaft - Front Rollers	1	
48	<b>R110-4053</b>	110-4053	Shaft - Front Roller	1	
52	<b>R302-5</b>	21-6010, 302-11, 302-37, 302-47, 302-5, 302-57, 302-58, 302-6, 31-0300, 32-9660, 60-0800, 62-3880, 92-4181	Fitting - Grease	2	
53	<b>R114-5410</b>	114-5410	Shaft - Short - Rear Roller	1	
54	<b>R1503938</b>		Shaft - Short Rear Rollers	1	
55	<b>R114-5407</b>	114-5407	Shaft - Long Rear Roller	1	
56	<b>R1503949</b>		Shaft - Long Rear Rollers	1	
57	<b>R107-3296</b>	107-3296, 99-5717	Shaft - Rear Long Roller	1	
58	<b>R110-4060</b>	110-4060	Shaft	1	
59	<b>R300106</b>	300106	Screw - Set 5/16-18 x 1/4	4	

All original equipment manufacturers names and part numbers are used for identification purposes only, and we are in no way implying that our products are original equipment parts. Prices subject to change without notice.