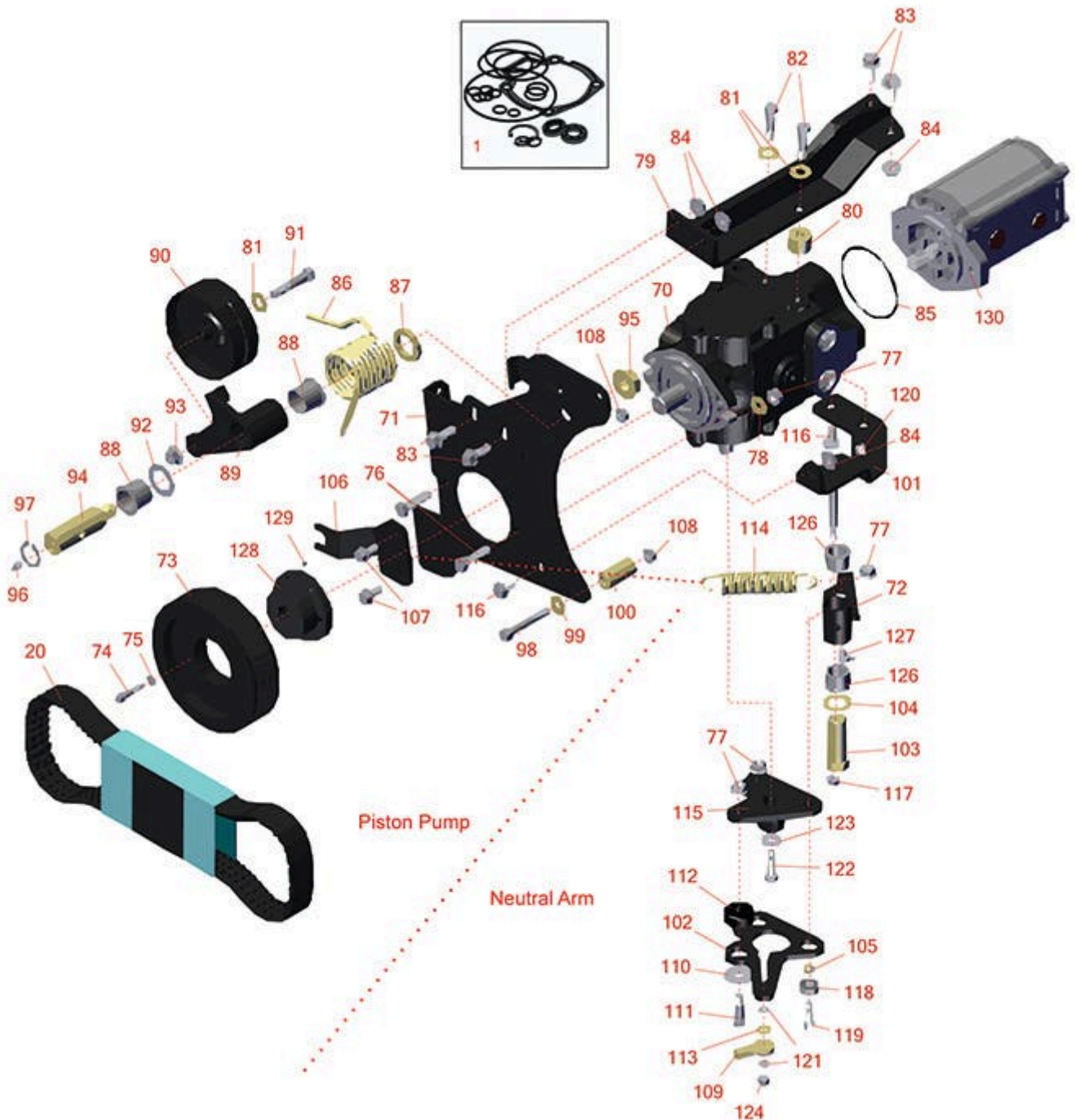




Replaces Toro Reelmaster 3555-D Parts

Traction Unit

Hydrostat & Neutral Arm



All original equipment manufacturers names and part numbers are used for identification purposes only, and we are in no way implying that our products are original equipment parts. Prices subject to change without notice.



Replaces Toro Reelmaster 3555-D Parts

Traction Unit

Hydrostat & Neutral Arm



Item No	R&R Part No.	OEM Part No.	Description	Qty Req	Order Quantity
Overhaul Kits					
1	R120-5754	120-5754	Seal Kit - Eaton Hydraulic Pump R104-4890	1	
Belts					
20	R99-3619	99-3619	Belt - 3V	1	
Other Parts Available					
70	R104-4890	104-4832, 104-4890	Pump - Piston	1	
71	R95-8933-03	95-8933, 95-8933-03	Plate - Mount - Pump	1	
72	R104-0422	104-0422	Neutral Arm Assy	1	
73	R99-3620	99-3620	PULLEY-3V - Pump	1	
74	R316797	321-13	Bolt - 1/4-20 x 1-1/4	3	
75	R3253-3	01-166-0070, 01-166-0410, 23-9-GD, 24-7150, 3253-3, 3256-1, 352-167	Washer - Lock 1/4	3	
76	R323-8	01-150-0060, 01-178-0612, 20-49-AD, 20-49-AGD, 323-8, 3273-41, 908036P	Bolt - Hex HD 3/8-16 x 1-1/2 GR8	2	

All original equipment manufacturers names and part numbers are used for identification purposes only, and we are in no way implying that our products are original equipment parts. Prices subject to change without notice.



Replaces Toro Reelmaster 3555-D Parts

Traction Unit

Hydrostat & Neutral Arm



Item No	R&R Part No.	OEM Part No.	Description	Qty Req	Order Quantity
77	R3296-39	32127-25, 32128-36, 3290-357, 3296-17, 3296-22, 3296-39, 915663P, 99-7443	Locknut - 3/8-16 Nylon	6	
78	R100-4852	100-4852	Washer - Hardened	2	
79	R99-3436-03	99-3436, 99-3436-03	Support- Pump	1	
80	R99-3440	99-3440	Spacer	2	
81	R80-6990	80-6990	Washer - Hardened	9	
82	R323-19	323-19	Bolt - Hx HD 3/8-16 x 1 5/8	2	
83	R3234-11	3234-11	Bolt - Hex Washer HD	4	
84	R32128-43	30-8990, 32128-43, 3290-357	Nut - Flanged Whiz - 3/8-16	5	
85	R353-949	353-949, 60-3520	O-Ring	1	
86	R115-3488	115-3488	Spring - Torsion	1	
87	R99-3625	99-3625	Spacer - Ar - Idler	1	
88	R99-3631	99-3631	Bushing - Flanged	2	
89	R99-3623-03	99-3623-03	Arm - Idler	1	
90	R107-7834	107-7834	Pulley - Idler - 4 in x 3/8 Mt	1	

All original equipment manufacturers names and part numbers are used for identification purposes only, and we are in no way implying that our products are original equipment parts. Prices subject to change without notice.



Replaces Toro Reelmaster 3555-D Parts

Traction Unit

Hydrostat & Neutral Arm



Item No	R&R Part No.	OEM Part No.	Description	Qty Req	Order Quantity
91	R323-10	01-150-0680, 01-178-0616, 100-6663, 100-8320, 1489, 20-51-AD, 20-51-AGD, 3224-6, 323-10, 323-35, 908336	Bolt - Hex HD 3/8-16 x 2	1	
92	R74-1810	74-1810	Washer	2	
93	R32128-21	32128-21	Locknut - Flanged 3/8-16 Whiz Top Lock	1	
94	R99-3624	99-3624	Shaft- Pivot - Idler	1	
95	R32128-54	32128-54	Nut - 5/8-18 Hex Serr Flanged	1	
96	R302-5	21-6010, 302-11, 302-37, 302-47, 302-5, 302-57, 302-58, 302-6, 31-0300, 32-9660, 60-0800, 62-3880, 92-4181	Fitting - Grease	1	
97	R458039	32151-36	Ring - Retaining	1	
98	R151379	33114-060, 42-9510	Bolt - Hx HD 8-1.25 x 65mm	1	
99	R87-8640	87-7510, 87-8640	Washer - Flat	3	
100	R95-8941	95-8941	Spacer - Pump Mount	4	

All original equipment manufacturers names and part numbers are used for identification purposes only, and we are in no way implying that our products are original equipment parts. Prices subject to change without notice.



Replaces Toro Reelmaster 3555-D Parts

Traction Unit

Hydrostat & Neutral Arm



Item No	R&R Part No.	OEM Part No.	Description	Qty Req	Order Quantity
101	R95-8960-03	95-8960, 95-8960-03	Bracket- Neutral	1	
102	R99-3594-03	99-3594-03	Lever - Pump	1	
103	R76-8640	76-8640	Stud - Traction	1	
104	R3-6498	3--6498, 3-6498, 47-8270	Washer - Thrust	1	
105	R100-4817	100-4817	Spacer - Bearing	1	
106	R104-0464-03	104-0464-03, 99-3553, 99-3553-03	Bracket - Support	1	
107	R3234-5	3234-5, 62-3310	Bolt - 5/16-18x3/4 Hx Ser Was HD	2	
108	R32128-44	32128-44	Nut	2	
109	R2411-41	2411-41	Rod End - Ball Joint	1	
110	R2844	2844	Washer	3	
111	R150776	95-3857	Bolt - Button HD Soc CS 3/8-16 x 1-1/2	3	
112	R63-9750	63-9750, 64-9750	Mount - Rubber	3	
113	R3256-22	24-9-BD, 3-1032, 3256-1, 3256-22, 93-0954, 93-0989	Washer - Flat 1/4 Yellow	1	
114	R94-1369	94-1369	Spring - Extension	1	
115	R99-3598-03	120-5566, 99-3598-03	Hub Assy	1	

All original equipment manufacturers names and part numbers are used for identification purposes only, and we are in no way implying that our products are original equipment parts. Prices subject to change without notice.



Replaces Toro Reelmaster 3555-D Parts

Traction Unit

Hydrostat & Neutral Arm



Item No	R&R Part No.	OEM Part No.	Description	Qty Req	Order Quantity
116	R3234-1	321-11, 3234-1	Bolt - Flanged Serrated Hex HD 3/8-16 x 3/4	3	
117	R3296-29	1-804256, 3290-357, 3296-29, 915662P	Locknut - 5/16-18 ESNA	1	
118	R251-259	251-259, 251-307	Bearing - Ball	1	
119	R3274-104	3274-104	Bolt - Hx Soc Button HD	1	
120	R32153-3	119-4038, 22-12-AJFD, 32127-35, 32146-5, 32153-3, 3296-18, 3296-29, 3296-31, N/A	Locknut - 5/16-18 ESNA Zinc	1	
121	R6050-103	48-8010, 48-8030	Washer - Flat	2	
122	R3210-6	3210-6	Bolt - Hex HD	1	
123	R88-7200	88-7200	Washer - Flat	1	
124	R301504	2296-42, 301504, 32127-24, 32128-33, 32146-17, 3296-16, 3296-42, 3296-42 , 915661P	Locknut - ESNA 1/4-20	1	
126	R256-113	256-113	Bushing - 3/4 ID x 1 1/8 Flange	2	
127	R302-60	302-60	Zerk - Grease 90 Deg.	1	
128	R100-4813	100-4813	Bushing - Taper Lock	1	

All original equipment manufacturers names and part numbers are used for identification purposes only, and we are in no way implying that our products are original equipment parts. Prices subject to change without notice.



Replaces Toro Reelmaster 3555-D Parts

Traction Unit

Hydrostat & Neutral Arm



Item No	R&R Part No.	OEM Part No.	Description	Qty Req	Order Quantity
129	R3241-5	3241-5, 3245-7, 352-103, Jul-93	Screw - Set 1/4-20 x 3/8	1	
130	R121-7841	121-7841	Hydraulic Motor	1	

All original equipment manufacturers names and part numbers are used for identification purposes only, and we are in no way implying that our products are original equipment parts. Prices subject to change without notice.