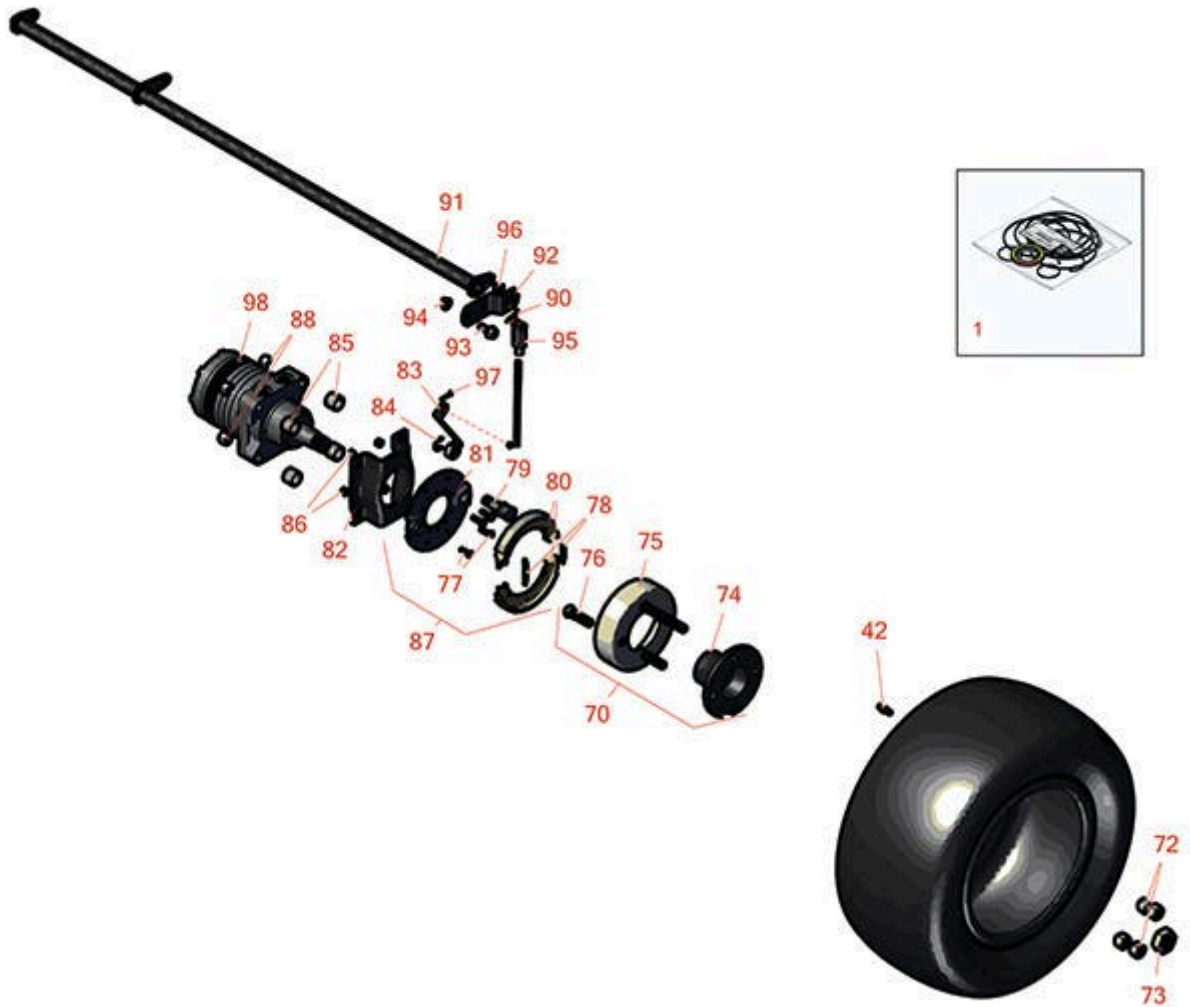




Replaces Toro Reelmaster 3550-D Parts

Traction Unit - Model 03910

Front Wheel



All original equipment manufacturers names and part numbers are used for identification purposes only, and we are in no way implying that our products are original equipment parts. Prices subject to change without notice.



Replaces Toro Reelmaster 3550-D Parts

Traction Unit - Model 03910

Front Wheel



| Item No | R&R Part No. | OEM Part No. | Description | Qty Req | Order Quantity |
|------------------------------|--------------------|---|--|---------|----------------|
| Overhaul Kits | | | | | |
| 1 | R76-0800 | 100-6131, 76-0800, 94-8178 | Seal Kit - Hyd Wheel Motor | 1 | |
| Tires | | | | | |
| 0 | TIRES | | Click Here to View Complete Tire Selection | 0 | |
| 42 | R232-27 | 232-27, 232-31 | Stem - Valve w/ Cap | 2 | |
| Other Parts Available | | | | | |
| 70 | R17-8149 | 17-8149 | Wheel Hub Assy | 2 | |
| 72 | R242-50 | 242-50 | Nut - 1/2-20 Wheel | 8 | |
| 73 | R26-3790 | 26-3790 | Nut - Hex - Wheel Motor 1-20 | 2 | |
| 74 | R93-6838-03 | 17-4710-03, 93-6838, 93-6838-03 | Hub-Wheel | 2 | |
| 75 | R10-6850 | 10-6850 | Drum - Brake | 2 | |
| 75 | R104-4809 | 104-4809 | Drum - Brake | 2 | |
| 76 | R85-6540 | 85-6540 | Stud - Drive 1/2-20 x 2 | 8 | |
| 77 | R321-5 | 321-31, 321-5 | Bolt - Hex HD 1/4-20 x 7/8 | 8 | |
| 78 | R70-9880 | 70-9880 | Spring - Brake Shoe | 4 | |
| 79 | R104-7707 | 104-7707, 104-7708, 70-9850, 70-9860 | Cam - Brake | 2 | |
| 80 | R70-9840 | 70-9840 | Shoe - Brake | 4 | |
| 81 | R70-9870 | 70-9870 | Plate - Backing | 2 | |

All original equipment manufacturers names and part numbers are used for identification purposes only, and we are in no way implying that our products are original equipment parts. Prices subject to change without notice.



Replaces Toro Reelmaster 3550-D Parts

Traction Unit - Model 03910

Front Wheel



| Item No | R&R Part No. | OEM Part No. | Description | Qty Req | Order Quantity |
|---------|---------------------|--|------------------------|---------|----------------|
| 82 | R84-2000-03 | 84-2000, 84-2000-03, 84-2000-0P | Bracket - Brake | 2 | |
| 83 | R93-6850 | 114-2726, 127-8567, 93-6850 | Lever - Brake | 2 | |
| 84 | R150513 | 104-7706, 127-8566 | E - Clip - Brake Assy | 1 | |
| 85 | R119-8238 | 119-8238 | Spacer - Deck Pulley | 8 | |
| 86 | R301504 | 2296-42, 301504, 32127-24, 32128-33, 32146-17, 3296-16, 3296-42, 3296-42 , 915661P | Locknut - ESNA 1/4-20 | 8 | |
| 87 | R71-1500 | 104-7705, 71-1500 | Brake Assy | 2 | |
| 88 | RF5003 | 32127-29, 32131-5, 32132-5, 3296-23 | Locknut - ESNA 1/2-13 | 4 | |
| 90 | R3272-10 | 01-151-0120, 105-7512, 3272-10, N/A | Pin - Cotter 1/8 x 3/4 | 2 | |
| 91 | R104-4625-03 | 104-4625-03 | Brake Pivot Shaft | 1 | |
| 92 | R95-8683 | 95-8683 | Bracket - Pivot | 2 | |
| 93 | R3234-11 | 3234-11 | Bolt - Hex Washer HD | 4 | |

All original equipment manufacturers names and part numbers are used for identification purposes only, and we are in no way implying that our products are original equipment parts. Prices subject to change without notice.



Replaces Toro Reelmaster 3550-D Parts

Traction Unit - Model 03910

Front Wheel



| Item No | R&R Part No. | OEM Part No. | Description | Qty Req | Order Quantity |
|---------|------------------|--|--------------------------------|---------|----------------|
| 94 | R104-8301 | 104-8301, 104-9301, 109-6658, 133-7570 | Locknut - 3/8-16 Nylon Flanged | 2 | |
| 95 | R282-2 | 1-303105, 282-2 | Yoke | 2 | |
| 96 | R256-156 | 256-156, 256-219 | Bushing - Flanged | 2 | |
| 97 | R1023-4 | 01-151-0150, 1023-4, 19-6220, 214-14, 215-54, 28-9-D, 3272-4, 3272-6, 513567, 932008P | Pin - Cotter 3/32 x 3/4 | 2 | |
| 98 | R110-8785 | 110-8785 | Hydraulic Motor - LH Wheel | 1 | |
| 98 | R110-8786 | 110-8786, 95-8693 | Hydraulic Motor - RH Wheel | 1 | |

All original equipment manufacturers names and part numbers are used for identification purposes only, and we are in no way implying that our products are original equipment parts. Prices subject to change without notice.