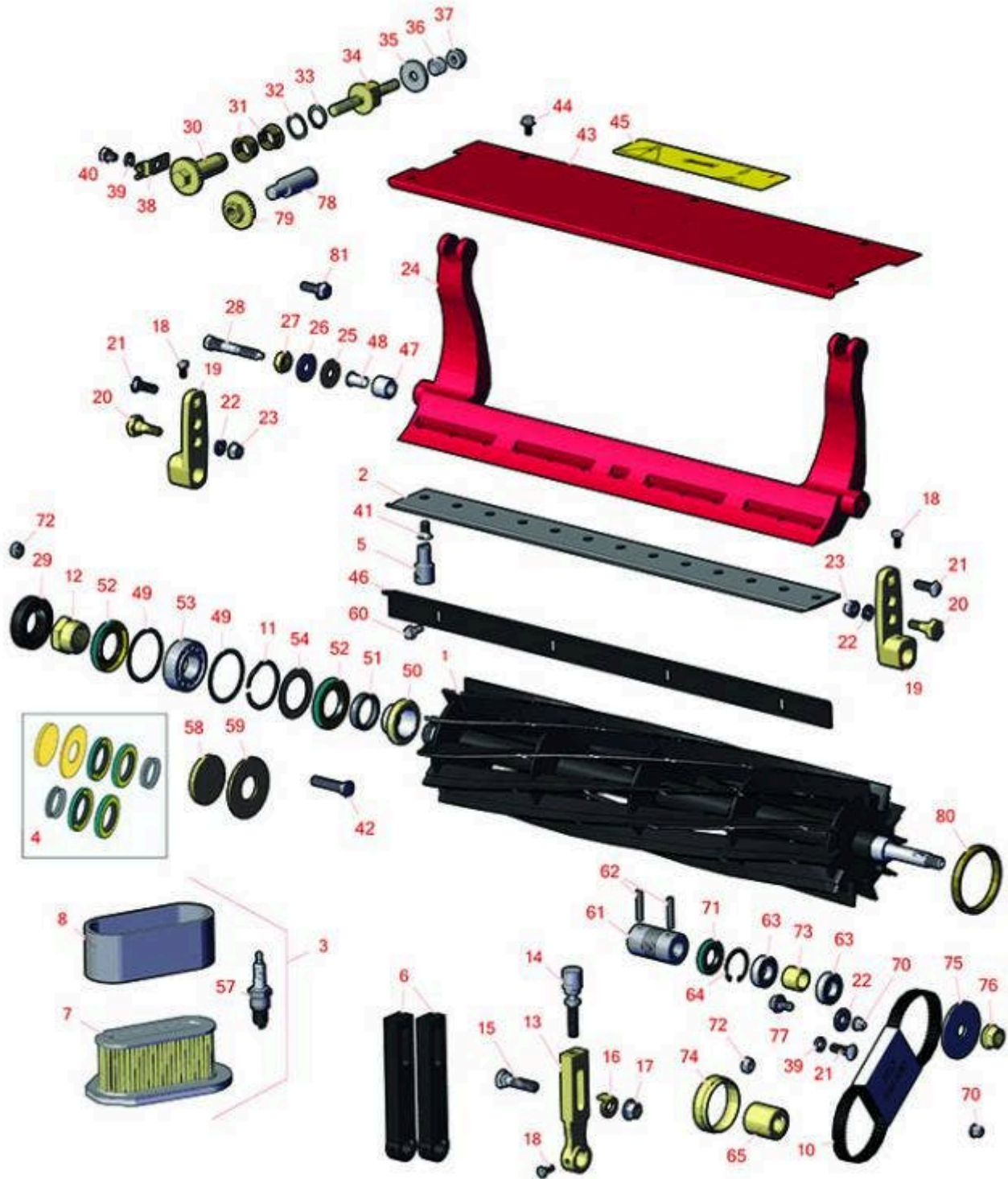




Replaces Toro Greensmaster Flex 21 Parts

DPA Cutting Unit - Model 04200 (Serial 240001001 & up)
Reel & Bedknife



All original equipment manufacturers names and part numbers are used for identification purposes only, and we are in no way implying that our products are original equipment parts. Prices subject to change without notice.



Replaces Toro Greensmaster Flex 21 Parts

DPA Cutting Unit - Model 04200 (Serial 240001001 & up)
Reel & Bedknife



Item No	R&R Part No.	OEM Part No.	Description	Qty Req	Order Quantity
---------	--------------	--------------	-------------	---------	----------------

R&R Reels, Lifetime Guaranteed

1	R115-4289	115-4289	Reel - 14 Blade	1	
---	------------------	----------	-----------------	---	--

Detail Description: R&R Reel blades are manufactured from high carbon-boron alloy steel and then hardened to RC46-49 to match the temper of our bedknives and original equipment bedknives. All R&R Reels are cylindrically ground on bearing surfaces and then relief ground. Reels are then precision computer balanced for extended bearing and reel life. R&R Products Reels are guaranteed against defects in material and workmanship for the life of the reel under normal use.:

1	R104-0500	104-0500	Reel - 11 Blade	1	
---	------------------	----------	-----------------	---	--

Detail Description: R&R Reel blades are manufactured from high carbon-boron alloy steel and then hardened to RC46-49 to match the temper of our bedknives and original equipment bedknives. All R&R Reels are cylindrically ground on bearing surfaces and then relief ground. Reels are then precision computer balanced for extended bearing and reel life. R&R Products Reels are guaranteed against defects in material and workmanship for the life of the reel under normal use.:

1	R105-2400	105-2400	Reel - 8 Blade	1	
---	------------------	----------	----------------	---	--

Detail Description: R&R Reel blades are manufactured from high carbon-boron alloy steel and then hardened to RC46-49 to match the temper of our bedknives and original equipment bedknives. All R&R Reels are cylindrically ground on bearing surfaces and then relief ground. Reels are then precision computer balanced for extended bearing and reel life. R&R Products Reels are guaranteed against defects in material and workmanship for the life of the reel under normal use.:

1	R107-7635	107-7635	Reel - 11 Blade	1	
---	------------------	----------	-----------------	---	--

Detail Description: R&R Reel blades are manufactured from high carbon-boron alloy steel and then hardened to RC46-49 to match the temper of our bedknives and original equipment bedknives. All R&R Reels are cylindrically ground on bearing surfaces and then relief ground. Reels are then precision computer balanced for extended bearing and reel life. R&R Products Reels are guaranteed against defects in material and workmanship for the life of the reel under normal use.:

1	R107-7634	107-7634	Reel - 8 Blade	1	
---	------------------	----------	----------------	---	--

All original equipment manufacturers names and part numbers are used for identification purposes only, and we are in no way implying that our products are original equipment parts. Prices subject to change without notice.



Replaces Toro Greensmaster Flex 21 Parts

DPA Cutting Unit - Model 04200 (Serial 240001001 & up)
Reel & Bedknife



Item No	R&R Part No.	OEM Part No.	Description	Qty Req	Order Quantity
---------	--------------	--------------	-------------	---------	----------------

Detail Description: R&R Reel blades are manufactured from high carbon-boron alloy steel and then hardened to RC46-49 to match the temper of our bedknives and original equipment bedknives. All R&R Reels are cylindrically ground on bearing surfaces and then relief ground. Reels are then precision computer balanced for extended bearing and reel life. R&R Products Reels are guaranteed against defects in material and workmanship for the life of the reel under normal use.:

R&R Bedknives, Lifetime Guaranteed

2	R93-4264	57-4960, 63-8470, 93-4264	Bedknife - Low Cut .187 - 1.00 HOC	1	
---	-----------------	---------------------------------	---------------------------------------	---	--

Detail Description: R&R Bedknives are manufactured from high carbon-boron alloy steel and then hardened to RC46-49 to match the temper of our reel blades and original equipment reels. Bedknives are surface ground on the top and front edge and straightened three times before being packaged with oil for rust prevention. All R&R Bedknives now have an increased front edge grind for added life. All R&R Bedknives are guaranteed against defects in material and workmanship under normal use for the life of the part.:

2	R93-4263	63-8560, 66-9320, 93-4263, 93-6039	Bedknife - Tournament Cut .125 - .500 HOC	1	
---	-----------------	---	--	---	--

Detail Description: R&R Bedknives are manufactured from high carbon-boron alloy steel and then hardened to RC46-49 to match the temper of our reel blades and original equipment reels. Bedknives are surface ground on the top and front edge and straightened three times before being packaged with oil for rust prevention. All R&R Bedknives now have an increased front edge grind for added life. All R&R Bedknives are guaranteed against defects in material and workmanship under normal use for the life of the part.:

2	R93-4262	65-8250, 93-4262, 93-4263	Bedknife - Micro Cut .062 - .187 HOC	1	
---	-----------------	---------------------------------	---	---	--

Detail Description: R&R Bedknives are manufactured from high carbon-boron alloy steel and then hardened to RC46-49 to match the temper of our reel blades and original equipment reels. Bedknives are surface ground on the top and front edge and straightened three times before being packaged with oil for rust prevention. All R&R Bedknives now have an increased front edge grind for added life. All R&R Bedknives are guaranteed against defects in material and workmanship under normal use for the life of the part.:

2	R108-4303	104-7720, 108-4303	Bedknife - Micro Cut Extended .062 - .187 HOC	1	
---	------------------	-----------------------	--	---	--

All original equipment manufacturers names and part numbers are used for identification purposes only, and we are in no way implying that our products are original equipment parts. Prices subject to change without notice.



Replaces Toro Greensmaster Flex 21 Parts

DPA Cutting Unit - Model 04200 (Serial 240001001 & up)
Reel & Bedknife



Item No	R&R Part No.	OEM Part No.	Description	Qty Req	Order Quantity
---------	--------------	--------------	-------------	---------	----------------

Detail Description: R&R Bedknives are manufactured from high carbon-boron alloy steel and then hardened to RC46-49 to match the temper of our reel blades and original equipment reels. Bedknives are surface ground on the top and front edge and straightened three times before being packaged with oil for rust prevention. All R&R Bedknives now have an increased front edge grind for added life. All R&R Bedknives are guaranteed against defects in material and workmanship under normal use for the life of the part.:

2	R94-6392	62-2500, 94-6392	Bedknife - High Cut .312 - 1.00 HOC	1	
---	-----------------	---------------------	--	---	--

Detail Description: R&R Bedknives are manufactured from high carbon-boron alloy steel and then hardened to RC46-49 to match the temper of our reel blades and original equipment reels. Bedknives are surface ground on the top and front edge and straightened three times before being packaged with oil for rust prevention. All R&R Bedknives now have an increased front edge grind for added life. All R&R Bedknives are guaranteed against defects in material and workmanship under normal use for the life of the part.:

2	R150466	63-8600, 64-6393, 94-6393	Bedknife - Super Thick .312 - 1.00 HOC	1	
---	----------------	---------------------------------	---	---	--

Detail Description: R&R Bedknives are manufactured from high carbon-boron alloy steel and then hardened to RC46-49 to match the temper of our reel blades and original equipment reels. Bedknives are surface ground on the top and front edge and straightened three times before being packaged with oil for rust prevention. All R&R Bedknives now have an increased front edge grind for added life. All R&R Bedknives are guaranteed against defects in material and workmanship under normal use for the life of the part.:

R&R Razor Tool Steel Bedknives, Lifetime Guaranteed

2	R115-1881	115-1881	Bedknife - Razor Tool Steel - 21 Tournament Cut .125 - .500 HOC	1	
---	------------------	----------	---	---	--

Detail Description: R&R Razor bedknives are manufactured from premium alloy tool steel steel and then hardened to RC48-51 to match the temper of our Razor reel blades and original equipment premium series reels. Bedknives are surface ground on the top and front edge and specially packaged for rust prevention. All R&R Bedknives now have an increased front edge grind for added life. All R&R Bedknives are guaranteed against defects in material and workmanship under normal use for the life of the part. You can expect up to double the life over standard bedknives.:

2	R115-1880	115-1880	Bedknife - Razor Tool Steel - 21 Micro Cut .062 - .187 HOC	1	
---	------------------	----------	---	---	--

All original equipment manufacturers names and part numbers are used for identification purposes only, and we are in no way implying that our products are original equipment parts. Prices subject to change without notice.



Replaces Toro Greensmaster Flex 21 Parts

DPA Cutting Unit - Model 04200 (Serial 240001001 & up)
Reel & Bedknife



Item No	R&R Part No.	OEM Part No.	Description	Qty Req	Order Quantity
---------	--------------	--------------	-------------	---------	----------------

Detail Description: R&R Razor bedknives are manufactured from premium alloy tool steel steel and then hardened to RC48-51 to match the temper of our Razor reel blades and original equipment premium series reels. Bedknives are surface ground on the top and front edge and specially packaged for rust prevention. All R&R Bedknives now have an increased front edge grind for added life. All R&R Bedknives are guaranteed against defects in material and workmanship under normal use for the life of the part. You can expect up to double the life over standard bedknives.:

2	R150492	150492	Bedknife - Razor Tool Steel - 21 Micro Cut Ext	1	
---	----------------	--------	--	---	--

Detail Description: R&R Razor bedknives are manufactured from premium alloy tool steel steel and then hardened to RC48-51 to match the temper of our Razor reel blades and original equipment premium series reels. Bedknives are surface ground on the top and front edge and specially packaged for rust prevention. All R&R Bedknives now have an increased front edge grind for added life. All R&R Bedknives are guaranteed against defects in material and workmanship under normal use for the life of the part. You can expect up to double the life over standard bedknives.:

2	R112-7475	112-7475	Bedknife - Razor Tool Steel - 22 x 3/8 Fairway	1	
---	------------------	----------	--	---	--

Detail Description: R&R Razor bedknives are manufactured from premium alloy tool steel steel and then hardened to RC48-51 to match the temper of our Razor reel blades and original equipment premium series reels. Bedknives are surface ground on the top and front edge and specially packaged for rust prevention. All R&R Bedknives now have an increased front edge grind for added life. All R&R Bedknives are guaranteed against defects in material and workmanship under normal use for the life of the part. You can expect up to double the life over standard bedknives.:

Overhaul Kits & Service Tools

3	R30067	30067	Filter Kit - 400 Hour Maintenance	1	
---	---------------	-------	-----------------------------------	---	--

Detail Description: Includes: 1 ea: RAK11013-2132 Air Filter, RAK11013-2133 Air Filter & RN7734 NGK Spark Plug:

4	R108-3160	108-3160	Overhaul Kit - Reel	1	
---	------------------	----------	---------------------	---	--

Tech Note: Fits 2004 & Up:

Detail Description: Includes: 4 ea: R107-3233 Reel Seal; 2 ea: R107-3238 V-Ring; 1 ea: R20-9500 Washer & R108-3162:

All original equipment manufacturers names and part numbers are used for identification purposes only, and we are in no way implying that our products are original equipment parts. Prices subject to change without notice.



Replaces Toro Greensmaster Flex 21 Parts

DPA Cutting Unit - Model 04200 (Serial 240001001 & up)
Reel & Bedknife



Item No	R&R Part No.	OEM Part No.	Description	Qty Req	Order Quantity
5	R51-0880	51-0880	Bedknife Screw Driver Tool	1	
<i>Detail Description: Easily install and remove bed knife screws with the help of a ratchet with 3/8" drive. Tool manufactured with hardened alloy steel.:</i>					
6	R106-4699	106-4699	Bracket Kit - High Height of Cut (Set/2)	1	
Filters					
7	RAK11013-2132	93-8636	Kawasaki Element-Air Filter	1	
7	RRF10182	93-8636	SilverGuard Air Filter	1	
8	RAK11013-2133	93-8637	Kawasaki Pre Cleaner Foam - Air Filter	1	
8	RRF10410	93-8637	SilverGuard Foam Filter	1	
Belts					
10	R99-2022	99-2022	Belt - Reel Drive	1	
10	R99-2023	99-2023	Belt - Drum Drive	2	
Other Parts Available					
11	R3290-485	3290-485	Washer - Wave	1	
12	R107-3227	107-3227	Locknut - Reel	1	
<i>Tech Note: Ser# 240001001-2709999999:</i>					
12	R99-3767	99-3767	Locknut - Reel	1	
<i>Tech Note: Ser# 2100000001-240001001:</i>					
13	R107-3502	107-3502	Bracket - Front Roller 5-1/4 Oal	2	
<i>Tech Note: Ser# 240001001-260006000:</i>					

All original equipment manufacturers names and part numbers are used for identification purposes only, and we are in no way implying that our products are original equipment parts. Prices subject to change without notice.



Replaces Toro Greensmaster Flex 21 Parts

DPA Cutting Unit - Model 04200 (Serial 240001001 & up)
Reel & Bedknife



Item No	R&R Part No.	OEM Part No.	Description	Qty Req	Order Quantity
13	R110-7351	110-7351	Bracket - High HOC - 5 1/4	2	
<i>Tech Note: Ser# 210000001-240001001:</i>					
13	R99-3781	99-3781	Bracket - Front Roller 5 Oal	2	
<i>Tech Note: Ser# 210000001-240001001:</i>					
14	R106-2635	106-2635	Screw - HOC 2-7/16	2	
<i>Tech Note: Ser# 240001001-260006000:</i>					
14	R99-3782	99-3782	Nut - Adjusting Bed Bar	2	
<i>Tech Note: Ser# 210000001-240001001:</i>					
14	R110-7352	110-7352	Screw - HOC 2 5/8 Stainless	2	
<i>Tech Note: Ser# 240001001-270999999:</i>					
15	R150647	105-5342	Plow Bolt - HOC - Front Roller	2	
<i>Tech Note: Ser# 220000001-270999999:</i>					
15	R33125-045	33125-045	Bolt - Carriage M10-1.5 x 45	2	
<i>Tech Note: Ser# 210000001-210999999:</i>					
16	R104-2603	104-2603, 119-4158	Washer - HOC Bracket	2	
17	R106-4668	106-4668	Locknut - 10mm x 1.5 Top Lock	2	
<i>Tech Note: Ser# 240001001-270999999:</i>					
17	R14M7296	104-2611	Nut - 10mm x 1.5 Flanged	2	
<i>Tech Note: Ser# 210000001-270999999:</i>					
18	R48-7610	33113-012, 48-7610	Bolt - Hex HD Nyloc M6 x 12	4	

All original equipment manufacturers names and part numbers are used for identification purposes only, and we are in no way implying that our products are original equipment parts. Prices subject to change without notice.



Replaces Toro Greensmaster Flex 21 Parts

DPA Cutting Unit - Model 04200 (Serial 240001001 & up)
Reel & Bedknife



Item No	R&R Part No.	OEM Part No.	Description	Qty Req	Order Quantity
19	R99-3792	99-3792	Bracket - Rear Roller	2	
20	R105-3834	105-3834, 95-1618	Bolt - Shoulder	1	
<i>Tech Note: Ser# 210000001-270999999:</i>					
20	R95-1617	105-3833, 95-1617	Bolt - Eccentric Front Roller Bkt	1	
<i>Tech Note: Ser# 210000001-210999999:</i>					
21	R33124-025	33124-025	Bolt - Carriage M8-1.25 x 25	2	
22	R453009	01-166-0400, 24-10-BD, 24-9-AD, 32-9650, 3256-2, 3256-23, 3256-3, 3256-67, 3290-217, 3556-3, 4-2390, 7-0152	Washer - Flat 5/16 SAE	4	
<i>Tech Note: Ser# 210000001-270999999:</i>					
22	R310266	3256-23, 3256-3, 3556-3	Washer - Flat 5/16 USS	4	
<i>Tech Note: Ser# 210000001-270999999:</i>					

All original equipment manufacturers names and part numbers are used for identification purposes only, and we are in no way implying that our products are original equipment parts. Prices subject to change without notice.



Replaces Toro Greensmaster Flex 21 Parts

DPA Cutting Unit - Model 04200 (Serial 240001001 & up)
Reel & Bedknife



Item No	R&R Part No.	OEM Part No.	Description	Qty Req	Order Quantity
22	R453011	01-166-0100, 01-166-0120, 01-166-0270, 01-166-0500, 01-166-0600, 01-166-0620, 132-4593, 2356-3, 237-12, 24-10-AD, 24-11-AD, 24-11-BD, 24-12-AD, 24-12-BD, 30-9310, 32-8190, 3256-24, 3256-3, 3256-36, 3256-4, 453011, 47-9950, 48-9220, 513458, 7-0052	Washer - Flat 3/8 SAE Y/Zinc	4	
<i>Tech Note: Ser# 210000001-270999999:</i>					
23	R14M7298	104-2612, 33004-00	Nut - 8mm x 1.25 Flanged	4	
24	R99-3794-01	99-3794-01, 99-3794-03	Bed Bar - Aggressive	1	
25	R52-2860	119-4150, 52-2860	Washer - Bed Bar Pivot	4	
26	R52-2900	52-2900	Washer - Nylon	4	
27	R107-9045	107-9045, 3220-4	Lock Nut - 7/16-20 Jam	2	
<i>Tech Note: Ser# 240001001-260006000:</i>					
27	R3220-26	3220-26	Nut - 7/16-20 Jam	2	

All original equipment manufacturers names and part numbers are used for identification purposes only, and we are in no way implying that our products are original equipment parts. Prices subject to change without notice.



Replaces Toro Greensmaster Flex 21 Parts

DPA Cutting Unit - Model 04200 (Serial 240001001 & up)
Reel & Bedknife



Item No	R&R Part No.	OEM Part No.	Description	Qty Req	Order Quantity
<i>Tech Note: Ser# 210000001-240001000:</i>					
27	R32128-48	32128-48	Locknut - 7/16-20 Flanged	2	
<i>Tech Note: Ser# 240001001-260003000:</i>					
28	R65-6270	119-4050, 65-6270	Bolt - Bed Bar	2	
29	R150625	105-9945, 99-3801	Seal	2	
30	R106-5363	106-5363	Shaft - Adjusting - Bed Bar - Stainless	2	
31	R256-252	256-252	Bushing - 3/4 ID x 1 Flange	4	
32	R106-5335	106-5335	Wave Washer - Reel Adjusting	2	
<i>Tech Note: Ser# 240001001-270999999:</i>					
32	R95-3703	95-3703	Washer - Wave	2	
<i>Tech Note: Ser# 210000001-240001000:</i>					
33	R32120-93	32120-93	Snap Ring - HD	2	
34	R99-2096	99-2096	Screw - Bed Bar Adjustment - M10 Thrd 1 End	2	
35	R99-2098	99-2098	Washer - Bed Bar Adjuster	2	
36	R99-3755	99-3755	Spring - Bed Bar Adjusting	2	
37	R33025-00	32025-00, 33025-00	Locknut - 10mm x 1.5 Jam	2	
38	R99-2097	99-2097	Detent - Bed Bar Adjuster	2	

All original equipment manufacturers names and part numbers are used for identification purposes only, and we are in no way implying that our products are original equipment parts. Prices subject to change without notice.



Replaces Toro Greensmaster Flex 21 Parts

DPA Cutting Unit - Model 04200 (Serial 240001001 & up)
Reel & Bedknife



Item No	R&R Part No.	OEM Part No.	Description	Qty Req	Order Quantity
39	R3253-4	01-166-0110, 01-166-0510, 23-10-GD, 24-7170, 30-8520, 3253-4, 48-9350, 48-9360, 48-9570, 68-9420, 99-7577	Washer - Lock 5/16 Zinc	2	
40	R33114-010	33114-010	Bolt - Hex HD M8-1.25 x 10	2	
41	R150477	57-4910	Screw - Bedknife 5/16-18 x 1/2	13	
42	R99-3773	99-3773	Bolt- Plow 3/8-16 x 1 3/4	4	
43	R104-2632	104-2632	Shield - Grass	1	
44	R104-2628	104-2628	Bolt - Hex Washer M6-1.0 x 12	5	
45	R93-8064	93-8064	Decal - Warning	1	
46	R106-6924-03	106-2617-03, 106-6924-03	Cut-Off Bar	1	
<i>Tech Note: Ser# 240001001-311999999:</i>					
46	R104-2602-03	104-2602-03	Bar - Cut-Off	1	
<i>Tech Note: Ser# 210000001-240001000:</i>					
47	R63-9510	63-9480, 63-9510	Bushing - Rubber For Bed Bar	2	
48	R52-2890	52-2890	Bushing - Flanged	2	
49	R32151-92	32151-92	Retaining Ring	4	

All original equipment manufacturers names and part numbers are used for identification purposes only, and we are in no way implying that our products are original equipment parts. Prices subject to change without notice.



Replaces Toro Greensmaster Flex 21 Parts

*DPA Cutting Unit - Model 04200 (Serial 240001001 & up)
Reel & Bedknife*



Item No	R&R Part No.	OEM Part No.	Description	Qty Req	Order Quantity
50	R108-3150	106-8435, 108-3150	Sleeve Assy - Reel	2	
51	R107-3238	107-3238	V-Ring - Reel	2	
52	R107-3233	107-3233	Seal - Reel	4	
53	R251-342	251-342	Bearing - Reel	2	
54	R105-9943	105-9943	Washer - Thrust	1	
57	RN7131	108-2557	NGK Spark Plug - BPR6ES	1	
57	RN7734	108-2557, 93-8584	NGK Spark Plug - BPR5ES	1	
58	R108-3162	108-3162	Spacer	1	
59	R20-9500	20-9500	Washer	1	
60	R33103-016	33103-016, 93-5919	Screw-HHF	4	
60	R110-3986	110-3986, 48-8870, 56-6380	Screw - M6 x 1.0 x 20mm	4	
61	R99-3757	99-3757	Coupling - Flex	1	
62	R32121-69	119-4033, 120-8095, 32121-69	Pin - Roll 1/4 x 1-1/4	2	
63	R251-336	251-336	Bearing	2	
64	R32151-51	32151-51	Retaining Ring	1	
65	R107-3228	107-3228	Spacer - Seal	1	
70	R104-2612	104-2612	Nut - 8mm x 1.25 Fl Lock	4	
71	R253-120	253-120, 253-42	Seal	1	

All original equipment manufacturers names and part numbers are used for identification purposes only, and we are in no way implying that our products are original equipment parts. Prices subject to change without notice.



Replaces Toro Greensmaster Flex 21 Parts

DPA Cutting Unit - Model 04200 (Serial 240001001 & up)
Reel & Bedknife



Item No	R&R Part No.	OEM Part No.	Description	Qty Req	Order Quantity
<i>Tech Note: Ser# 210000001-240001000:</i>					
71	R338763	107-3205	Seal	1	
<i>Tech Note: Ser# 240001001-270999999:</i>					
72	R3296-59	3296-59	Locknut - 3/8-16 Nylon Jam	2	
72	R444850	3296-59	Nut - 3/8-16 Jam Center Lock	2	
73	R99-2079	99-2079	Spacer	1	
74	R99-2087	99-2087	Spacer	1	
75	R104-0532	104-0532	Washer - Pulley	1	
76	R104-2610	104-2610	Nut - HF M12 x 1.75	1	
77	R33114-016	33114-016, 42-9230, 42-9270, 48-7680, 48-7690, 48-7700	Bolt - Hx HD 8mm x 1.25 x 15	4	
78	R99-2093	99-2093	Nut - Adjusting Bed Bar	2	
79	R93-2549	93-2549	Knob - Bed Bar Adjustment	2	
<i>Tech Note: Ser# 210000001-240001001:</i>					
80	R99-2047	99-2047	Bushing - Bronze	2	
<i>Tech Note: Ser# 210000001-240001001:</i>					
81	R33104-020	33104-020	Bolt - Hex Washer HD	4	

All original equipment manufacturers names and part numbers are used for identification purposes only, and we are in no way implying that our products are original equipment parts. Prices subject to change without notice.