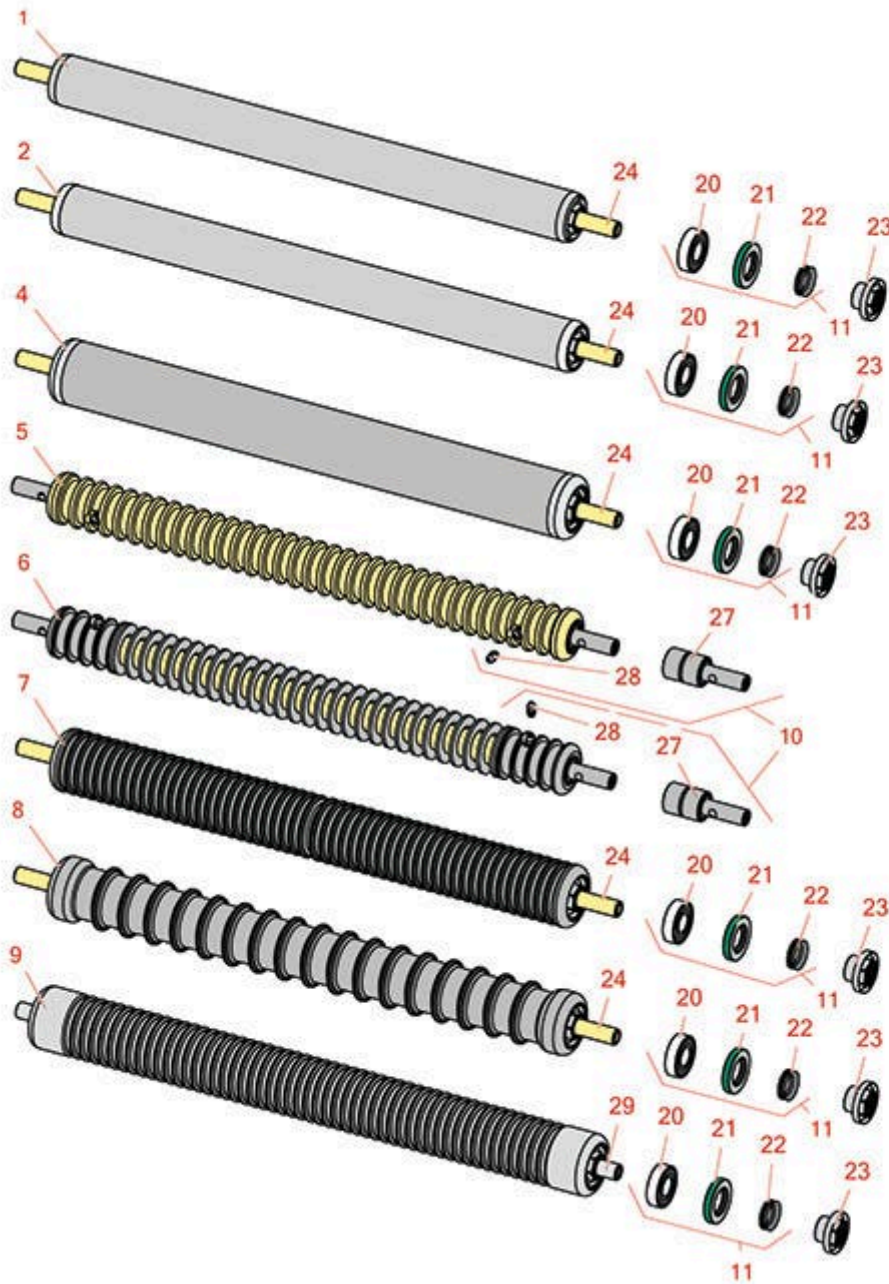
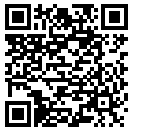




# Replaces Toro Greensmaster eFlex 2100

## Parts

DPA Cutting Unit - Model 04251 & 04252  
Rollers



All original equipment manufacturers names and part numbers are used for identification purposes only, and we are in no way implying that our products are original equipment parts. Prices subject to change without notice.



# Replaces Toro Greensmaster eFlex 2100

## Parts

DPA Cutting Unit - Model 04251 & 04252  
Rollers



Item No	R&R Part No.	OEM Part No.	Description	Qty Req	Order Quantity
1	<b>R115-7356</b>	115-7356	Roller - Smooth Tubular Aluminum - 2 in Dia	1	
<i>Tech Note: Constructed with a through shaft, this light weight aluminum roller uses a through shaft and ball bearings.:</i>					
2	<b>R140-5560</b>	105-5776, 106-6945, 107-3509, 119-4093, 120-9595, 140-5560	Roller - Smooth 2 in Steel Rear	1	
4	<b>R115-7388</b>	115-7388	Roller - Smooth Tubular Steel 2-1/2 in Dia	1	
<i>Tech Note: Constructed with a through shaft, this steel roller uses a through shaft and ball bearings.:</i>					
5	<b>R52-3200</b>	12-0840, 52-3200, 71-1550	Roller - Grooved Machined Solid Steel	1	
<i>Tech Note: Machined from solid steel, this heavy weight roller uses greasable "water-pump" style bearings.:</i>					
6	<b>R21-6540</b>	21-6540	Roller - Grooved Repairable Steel	1	
<i>Tech Note: Constructed with greasable "water-pump" style bearings, this roller can be repaired by unscrewing the ends and replacing the series of washers and spacers.:</i>					
7	<b>R115-7360</b>	115-7360	Roller - Narrow Grooved Machined Aluminum - 2 1/2	1	
<i>Tech Note: Constructed with a through shaft, this aluminum roller is machined with narrow grooves and uses ball bearings.:</i>					
8	<b>R115-7386</b>	115-7386	Roller - Wide Grooved Machined Aluminum - 2-1/2 Dia	1	
<i>Tech Note: Constructed with a through shaft, this aluminum roller is machined with 1-1/8" wide grooves for the least amount of ground contact and uses ball bearings.:</i>					

All original equipment manufacturers names and part numbers are used for identification purposes only, and we are in no way implying that our products are original equipment parts. Prices subject to change without notice.



# Replaces Toro Greensmaster eFlex 2100

## Parts

DPA Cutting Unit - Model 04251 & 04252  
Rollers



Item No	R&R Part No.	OEM Part No.	Description	Qty Req	Order Quantity
9	<b>R121-4675</b>	121-4675	Roller - Extended Machined Grooved	1	
<b>Overhaul Kits</b>					
10	<b>R107-1588</b>	107-1588	Overhaul Kit - Roller	1	
<i>Tech Note: Includes 2 ea.: R302-5 Grease Fittings &amp; R52-3180 Bearings:</i>					
11	<b>R107-1594</b>	107-1594	Overhaul Kit - Roller	1	
<i>Tech Note: Includes 2 ea.: R106-6941 Seals, R106-6942 V-Rings &amp; R251-347 Bearings:</i>					
<b>Other Parts Available</b>					
20	<b>R251-347</b>	251-347, 72-5690	Bearing - Ball	2	
21	<b>R106-6941</b>	106-6941	Seal - Double Lip	2	
22	<b>R106-6942</b>	106-6942	V-Ring - Roller	2	
23	<b>R108-3151</b>	106-6939, 108-3151	Locknut - Roller - Stainless	2	
24	<b>R119-4090</b>	119-4090	Shaft - Roller - Hardened	1	
27	<b>R52-3180</b>	21-6410, 52-3180	Bearing - Front Roller	2	
28	<b>R302-5</b>	21-6010, 302-11, 302-37, 302-47, 302-5, 302-57, 302-58, 302-6, 31-0300, 32-9660, 60-0800, 62-3880, 92-4181	Fitting - Grease	2	
29	<b>R120-5404</b>	120-5404	Shaft- Roller	1	

All original equipment manufacturers names and part numbers are used for identification purposes only, and we are in no way implying that our products are original equipment parts. Prices subject to change without notice.



# Replaces Toro Greensmaster eFlex 2100

## Parts

*DPA Cutting Unit - Model 04251 & 04252  
Rollers*



All original equipment manufacturers names and part numbers are used for identification purposes only, and we are in no way implying that our products are original equipment parts. Prices subject to change without notice.