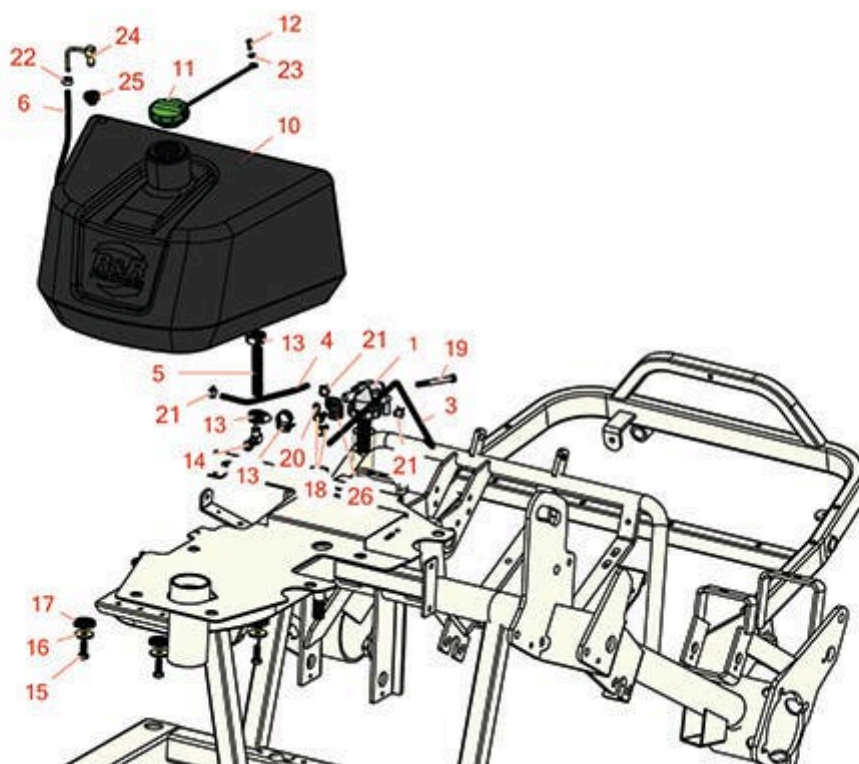


## Replaces R&R Products Versa-Green 2160D Parts

*Traction Unit*  
*Fuel Tank*





# Replaces R&R Products Versa-Green 2160D Parts

Traction Unit  
Fuel Tank



Item No	R&R Part No.	OEM Part No.	Description	Qty Req	Order Quantity
---------	--------------	--------------	-------------	---------	----------------

## Filters

1	<b>RX1909143017</b>		Kubota Fuel Filter	1	
---	---------------------	--	--------------------	---	--

*Detail Description: Includes RX1523143560 Filter:*

## Hoses

3	<b>R150826</b>		Fuel Return Hose - 3/16 Fuel Line	1	
4	<b>R150827</b>		Fuel Hose - Tank to Filter	1	
5	<b>R150828</b>		Fuel Hose - Filter to Engine	1	
6	<b>R106-1128</b>		Hose - Fuel - Tank to Valve	1	

## Other Parts Available

10	<b>R150305</b>		Fuel Tank	1	
11	<b>R93-3102</b>	R70-8620	Fuel Cap - Diesel - Green	1	
12	<b>R300104</b>		Screw - Button HD Cap 10-32 x 5/8	1	
13	<b>R2412-36</b>	R2210-87, R31-9140, R93-5818, R99-0772	Clamp - Hose 1/2	2	
14	<b>R83-1390</b>		Needle Valve - in Line	1	
15	<b>R323-6</b>	323-6, R01-150-0010, R01-178-0608, R20-47-AD, R20-47-AGD, R3224-2, R49-3510, R908034P, R908332	Bolt - Hex HD 3/8-16 x 1 GR5 YZ	4	
16	<b>R63-8410</b>	R53-6380, R63-4810	Washer - Isolator Bushing	4	

All original equipment manufacturers names and part numbers are used for identification purposes only, and we are in no way implying that our products are original equipment parts. Prices subject to change without notice.



# Replaces R&R Products Versa-Green

## 2160D Parts

*Traction Unit*

*Fuel Tank*



Item No	R&R Part No.	OEM Part No.	Description	Qty Req	Order Quantity
17	R240-11		Bushing - Rubber - Flanged	4	
18	R19M7866		Bolt - Flanged Hex M8-1.25 x 20	2	
19	R400216		Bolt - Hex HD 5/16-18 x 2-3/4	1	
20	R3296-29	3296-29, R1-804256, R915662P	Locknut - 5/16-18 ESNA	1	
21	R92-2379		Clamp - Hose	3	
22	R2412-146		Hose Clamp	2	
23	R24M7139		Washer - Flat 6mm	1	
24	R108-1643		Fitting - Return	1	
25	R46-6560		Bushing	1	
26	R150822		Bracket - Fuel Filter	1	

All original equipment manufacturers names and part numbers are used for identification purposes only, and we are in no way implying that our products are original equipment parts. Prices subject to change without notice.