

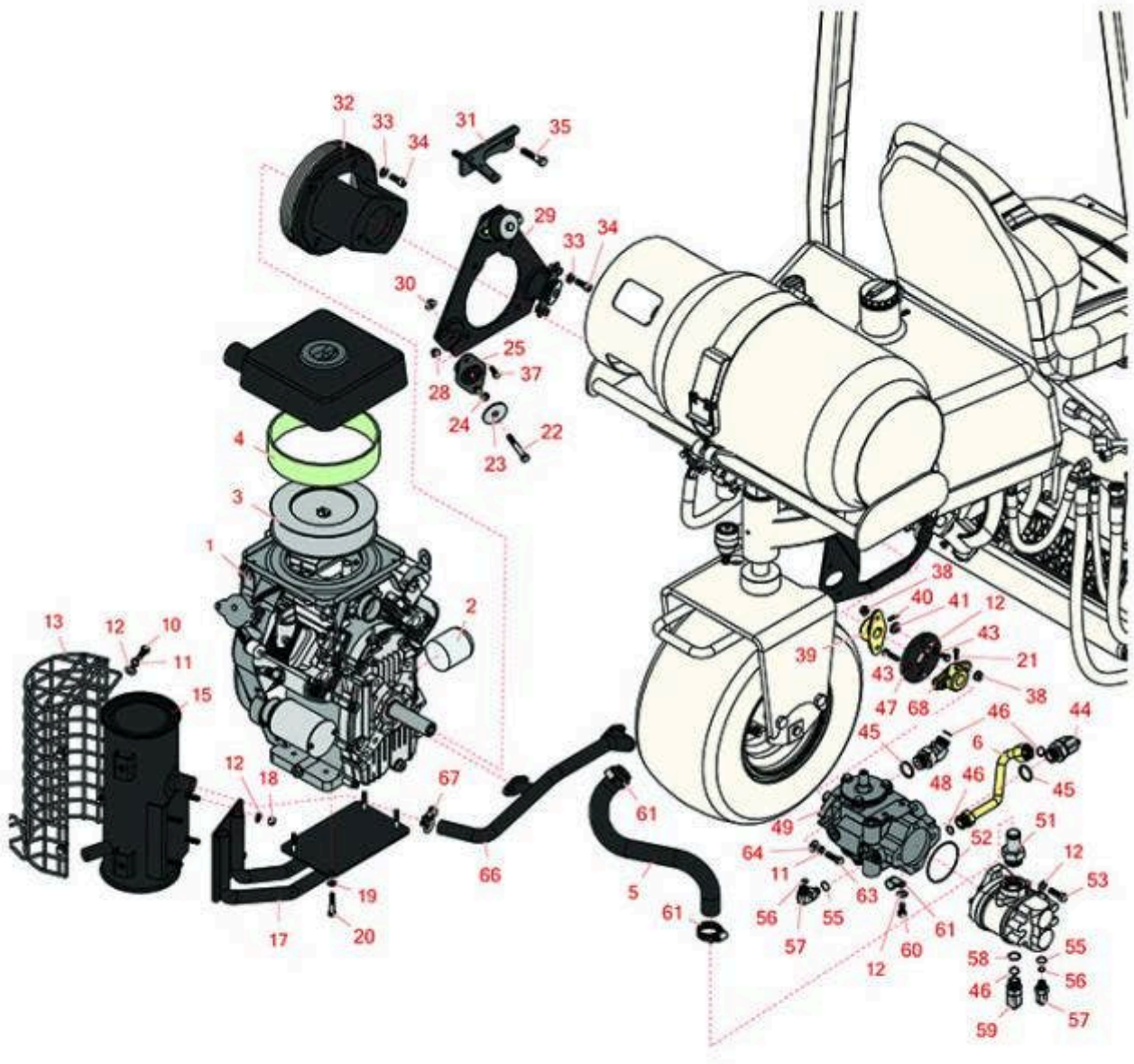


Replaces R&R Products Greens Max

2200LP Parts

Traction Unit

Engine & Hydrostat



All original equipment manufacturers names and part numbers are used for identification purposes only, and we are in no way implying that our products are original equipment parts. Prices subject to change without notice.



Replaces R&R Products Greens Max

2200LP Parts

Traction Unit

Engine & Hydrostat



Item No	R&R Part No.	OEM Part No.	Description	Qty Req	Order Quantity
Engine					
1	RAKFH601DES01S		Kawasaki Engine	1	
Filters					
2	RAK49065-2078		Kawasaki Oil Filter (2078S)	1	
3	RAK11013-0728	RAK11013-7011	Kawasaki Element-Air Filter	1	
4	RAK11013-7007		Element - Foam	1	
Hoses					
5	R105-8285		Hose - Inlet - Pump	1	
6	R105-8307		Tube-Hyd, Traction	1	
Other Parts Available					
10	R323-6	323-6, R01-150-0010, R01-178-0608, R20-47-AD, R20-47-AGD, R3224-2, R49-3510, R908034P, R908332	Bolt - Hex HD 3/8-16 x 1 GR5 YZ	4	
11	R3253-21	3253-21, R215-51, R30-8470, R7-1912, RMT3949	Washer - Lock 3/8	6	

All original equipment manufacturers names and part numbers are used for identification purposes only, and we are in no way implying that our products are original equipment parts. Prices subject to change without notice.



Replaces R&R Products Greens Max

2200LP Parts

*Traction Unit
Engine & Hydrostat*



Item No	R&R Part No.	OEM Part No.	Description	Qty Req	Order Quantity
12	R453011	3256-24, 453011, R01-166-0100, R01-166-0120, R01-166-0270, R01-166-0500, R01-166-0600, R01-166-0620, R132-4593, R237-12, R24-10-AD, R24-11-AD, R24-11-BD, R24-12-AD, R24-12-BD, R30-9310, R32-8190, R3256-24, R3256-3, R3256-36, R3256-4, R47-9950	Washer - Flat 3/8 SAE Y/Zinc	11	
13	R112-0291		Shield - Muffler	1	
15	R110-4001		Muffler	1	
17	R112-9196-03		Mount-Muffler	1	
18	R32152-2	R7-2306	Nut-Lock, Cone	4	
19	R453009	3256-3, R01-166-0400, R24-10-BD, R24-9-AD, R24H1136, R32-9650, R3256-2, R3256-23, R3256-67, R3290-217, R3556-3, R4-2390, R452006, R7-0152	Washer - Flat 5/16 SAE	4	

All original equipment manufacturers names and part numbers are used for identification purposes only, and we are in no way implying that our products are original equipment parts. Prices subject to change without notice.



Replaces R&R Products Greens Max

2200LP Parts

*Traction Unit
Engine & Hydrostat*



Item No	R&R Part No.	OEM Part No.	Description	Qty Req	Order Quantity
20	R101344	R322-8, R400194	Bolt - Hex HD 5/16-18 x 1-3/4	4	
21	R3241-6		Screw - Set Sq. HD. 1/4 x3/4	4	
22	R101526	321-11, R01-150-0970, R01-178-0620, R20-53-AGD, R3224-8, R323-12, R323-31, R323-47	Bolt - Hex HD 3/8-16 x 2-1/2 GR5	3	
23	R83-1040		Washer - Engine	3	
24	R83-1050		Spacer	2	
25	R93-5265	R107-2560, R125-5244, R366879	Mount - Engine	3	
28	R445722	R30-8980, R32128-2, R32128-20	Nut - Serrated Washer	6	
29	R85-8120-03	R85-8120	Mounting Plate - Engine	1	
30	R32128-43	R30-8990, R3290-357	Nut - Flanged Whiz - 3/8-16	2	
31	R105-4307-03		Bracket-Spring	1	
32	R83-1060-03	R83-1060	Adapter - Pump	1	
33	R3253-6	R01-166-0710, R23-12-GD, R59-7590, RF4076	Washer - Lock 7/16 Zinc	4	
34	R3274-7		Bolt - Soc HD Cap 3/8-16 x 1	2	
35	R324-8	R01-178-0716	Bolt - Hx HD 7/16-14 x 2	2	

All original equipment manufacturers names and part numbers are used for identification purposes only, and we are in no way implying that our products are original equipment parts. Prices subject to change without notice.



Replaces R&R Products Greens Max

2200LP Parts

*Traction Unit
Engine & Hydrostat*



Item No	R&R Part No.	OEM Part No.	Description	Qty Req	Order Quantity
37	R322-3	R01-150-1420, R01-178-0506, R09109, R20-24-AD, R20-24-AGD, R48-9270, R513339, R908017P, RB311201	Bolt - Hex HD 5/16-18 x 3/4	6	
38	R3296-39	3296-39, R32127-25, R32128-36, R3296-17, R3296-22, R915663P, R99-7443	Locknut - 3/8-16 Nylon	4	
39	R27-1960	R110-5236	Hub - Engine	2	
40	R3241-7		Set Screw - 1/4-20 x 1/2 Sq HD Nyloc	4	
41	R27-6600		Spacer - Pump Coupling	4	
43	R400190	R01-150-0720, R01-178-0510, R30-8680, R322-6, R513343	Bolt - Hex HD 5/16-18 x 1-1/4 GR5	4	
44	R340-139		Hydraulic Fitting - 90 Deg	1	
45	R237-81		O-Ring	1	
46	R237-65		O-Ring	1	
47	R44-2230	R115-4523, R27-6560, R80-8650	Coupling - Rubber - Pump	1	
48	R340-156		Hydraulic Fitting	1	
49	R105-0494	R100-3174, R98-4609	Hydrostat Assy	1	

All original equipment manufacturers names and part numbers are used for identification purposes only, and we are in no way implying that our products are original equipment parts. Prices subject to change without notice.



Replaces R&R Products Greens Max

2200LP Parts

*Traction Unit
Engine & Hydrostat*



Item No	R&R Part No.	OEM Part No.	Description	Qty Req	Order Quantity
51	R354-78		Connector-Hose	1	
52	R353-949	R60-3520	O-Ring	1	
53	R3274-1		Bolt - 3/8-16 x 1 1/4 Soc HD Cap	2	
55	R237-79		O-Ring	2	
56	R237-22	R107-8844, R232-72, R237-78	O-Ring	2	
57	R340-18		Hydraulic Fitting	2	
58	R237-80	R327-80	O-Ring	1	
59	R340-17		No 10 Male Orfs x No 10 Male Orb	1	
60	R400258	R01-150-0800, R01-178-0600, R01-178-0606, R20-45-AD, R31-0200, R31-9910, R3224-1, R323-4	Bolt - Hex HD 3/8-16 x 3/4	1	
61	R2412-41		Clamp	1	
63	R400264	323-7, R01-150-0180, R01-178-0610, R19H1732, R20-48-AD, R20-48-AGD, R32-9160, R3224-3, R323-29, R323-7, R400264, R908035P	Bolt - Hex HD 3/8-16 x 1-1/4	2	
64	R100-4852		Washer - Hardened	2	
66	R108-6539	R83-1080	Exhaust Manifold	1	

All original equipment manufacturers names and part numbers are used for identification purposes only, and we are in no way implying that our products are original equipment parts. Prices subject to change without notice.



Replaces R&R Products Greens Max

2200LP Parts

Traction Unit

Engine & Hydrostat



Item No	R&R Part No.	OEM Part No.	Description	Qty Req	Order Quantity
67	R2412-37	R01-170-0150, R2112-11	Clamp - Muffler 1-1/4	1	
68	R110-5227	R93-2589	Hub - Hydro Pump - 7/8 Bore	1	

All original equipment manufacturers names and part numbers are used for identification purposes only, and we are in no way implying that our products are original equipment parts. Prices subject to change without notice.