

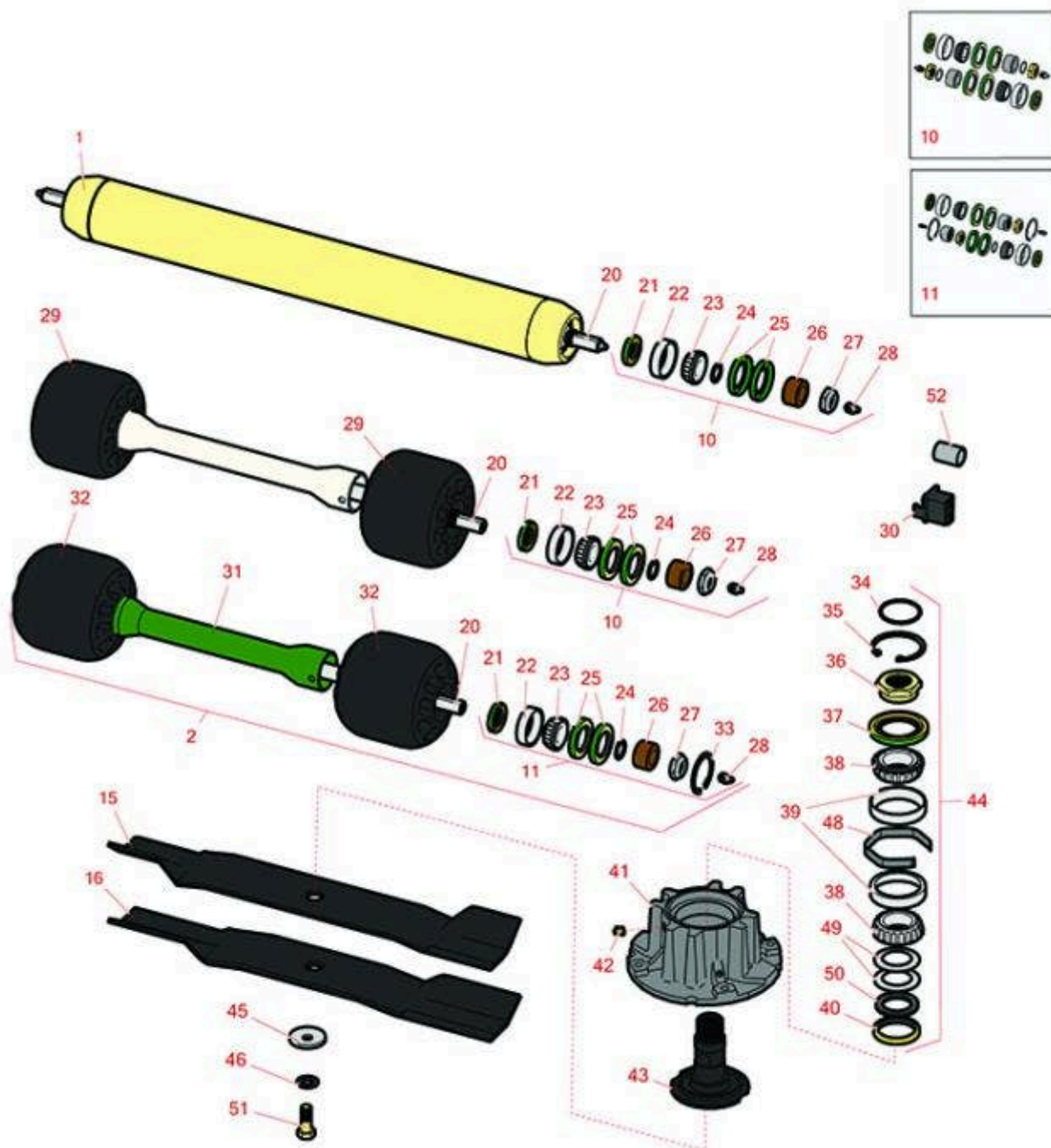


# Replaces John Deere 8800A Rotary

## Mower Parts

Rotary Cutting Unit

Rotary Cutting Unit



All original equipment manufacturers names and part numbers are used for identification purposes only, and we are in no way implying that our products are original equipment parts. Prices subject to change without notice.



# Replaces John Deere 8800A Rotary

## Mower Parts

Rotary Cutting Unit

Rotary Cutting Unit



Item No	R&R Part No.	OEM Part No.	Description	Qty Req	Order Quantity
---------	--------------	--------------	-------------	---------	----------------

### R&R Rollers

1	RTCA16183	TCA16183	Roller - Rear - Solid - HD Steel	5	
2	RTCA26180	TCA19028, TCA26180	Roller Assy	5	

### Overhaul Kits

10	RAET10632	AET10632	Overhaul Kit - Roller	5	
<i>Detail Description: Includes 4 ea: RET15755 Seal; 2 ea: R237-54 O-Ring, R253-122 Seal, R254-78 Bearing, R254-79 Cup, R3296-15 Locknut, R471219 Grease Zerk, RET15726 Sleeve, RET15756 Seal;</i>					
11	R500578		Overhaul Kit - Roller	5	

### Other Parts Available

20	RTC20818	TCU20818	Shaft - Roller	10	
21	RET15756	ET15756, MT1739, MT739	Seal	20	
22	R254-79	JD8226	Cup - Bearing	20	
<i>Detail Description: Use R254-79M installation mandrel to properly install race.:</i>					
23	R254-78	JD8188	Tapered Bearing Cone	20	
24	R237-54	U46731, U6731	O-Ring - Small	20	
25	RET15755	ET15755	Seal - Oil	40	
26	RET15726	ET15726, RET15726	Sleeve - Wear Hardened	20	
27	R3296-15	N101345	Locknut - 3/4-16 Nylon Jam	20	

All original equipment manufacturers names and part numbers are used for identification purposes only, and we are in no way implying that our products are original equipment parts. Prices subject to change without notice.



# Replaces John Deere 8800A Rotary

## Mower Parts

Rotary Cutting Unit

Rotary Cutting Unit



Item No	R&R Part No.	OEM Part No.	Description	Qty Req	Order Quantity
28	<b>R471219</b>	471219, 471231, JD7759, JD7798	Zerk - Grease	20	
29	<b>RTC25955</b>	TCU25955	Roller - Front Gauge	10	
30	<b>RUC15039</b>	TCU25645	Lock	5	
31	<b>RTCA26181</b>	TCA19375, TCA26181	Spacer - Axle	5	
32	<b>RTC38614</b>	TCU38614	Roller - Front Gauge	10	
33	<b>R40M1863</b>	40M1863	Ring - Snap	10	
34	<b>RH142234</b>	H142234	O - Ring	5	
35	<b>R32120-2</b>	M42702	Ring - Retaining	5	
36	<b>RTC27862</b>	TCU27862	Nut - Spindle	5	
37	<b>RTC32975</b>	TCU32975	Seal	5	
38	<b>RJD8194</b>	JD8194	Tapered Bearing Cone	10	
39	<b>RJD8230</b>	JD8230	Tapered Bearing Cup	10	
40	<b>RTC32974</b>	TCU32974	Seal	5	
41	<b>RUC32489</b>	TCU32112	Housing - Spindle	0	
42	<b>R170714</b>	E14814	Fitting - Pressure Relief	5	
43	<b>RTC39253</b>	TCU32113, TCU39253	Spindle - Blade	5	
44	<b>RAUC20746</b>	AUC19580, TCA25685	Spindle Assy	5	
45	<b>RM147138</b>	M147138	Washer - Belville	5	
46	<b>RTC27937</b>	TCU27937	Washer - Anti Friction	5	

All original equipment manufacturers names and part numbers are used for identification purposes only, and we are in no way implying that our products are original equipment parts. Prices subject to change without notice.



# Replaces John Deere 8800A Rotary

## Mower Parts

*Rotary Cutting Unit*

*Rotary Cutting Unit*



Item No	R&R Part No.	OEM Part No.	Description	Qty Req	Order Quantity
48	<b>RTCU32114</b>	TCU32114	Spacer - Spindle	5	
49	<b>RUC10061</b>	UC10061	Disk Spring	10	
50	<b>RUC10057</b>	SU303558, UC10057	Thrust Washer - Hardened	5	
51	<b>RTCU28104</b>	TCU28104	Bolt - Blade 10.9 Hardness	5	
52	<b>RTCU27014</b>	TCU27014	Bushing	20	

All original equipment manufacturers names and part numbers are used for identification purposes only, and we are in no way implying that our products are original equipment parts. Prices subject to change without notice.