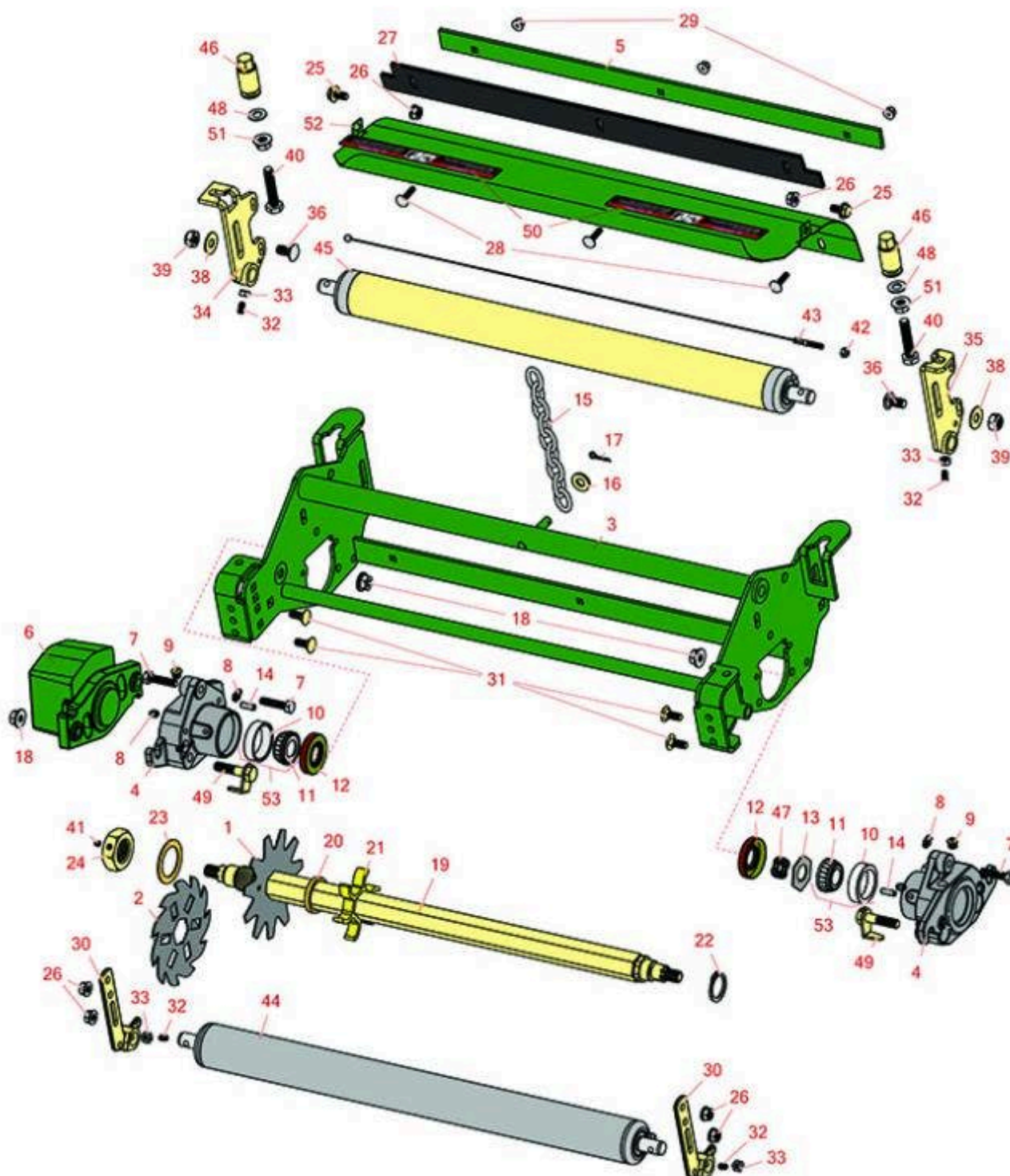




# Replaces John Deere 7500 Reel Mower Parts

*Verti-Cut Reel & Frame*



All original equipment manufacturers names and part numbers are used for identification purposes only, and we are in no way implying that our products are original equipment parts. Prices subject to change without notice.



# Replaces John Deere 7500 Reel Mower Parts

Verti-Cut Reel & Frame



Item No	R&R Part No.	OEM Part No.	Description	Qty Req	Order Quantity
1	RAMT2703	AMT2703, ET17719	Blade - Vertical Mower	27	
2	R150209C	TCU26776	Verti-Cut Blade - Carbide Tipped 2mm	27	
<i>Detail Description: STRONG BY DESIGN. Each blade is made with the highest quality hand-picked steel, and laser-cut to our exacting specifications for superior toughness and wear.&lt;BR&gt;&lt;BR&gt;TUNGSTEN CARBIDE TIPS. Protect blades from abrasion for extended life and maintain a consistent cutting depth. Optional cutting widths to meet local turf conditions.:</i>					
3	RAMT2574	AMT2574	Frame - Verticut	1	
4	RMT7294	MT2647, MT7294	Housing - Reel	2	
5	RAMT2704	AMT2704, MT169	Strap - Verticut Shield	1	
6	RMT6476	MT6476	Counterweight	2	
7	R19M8008	19M8008	Bolt - Hex HD M8-1.25 x 35	6	
8	R302-5	JD7797, JD7842, JD7844	Fitting - Grease	4	
9	R170714	E14814	Fitting - Pressure Relief	2	
10	R254-79	JD8226	Cup - Bearing	2	
<i>Detail Description: Use R254-79M installation mandrel to properly install race.:</i>					
11	R254-78	JD8188	Tapered Bearing Cone	2	
12	RET14566	ET14566	Seal - Reel	2	
13	RET16704	ET16704	Retainer	1	
14	RR30587	30587, R30587	Pin - Dowell 1/4 Dia. x .75	2	
15	RAMT1479	AMT1479	Chain - Link	1	

All original equipment manufacturers names and part numbers are used for identification purposes only, and we are in no way implying that our products are original equipment parts. Prices subject to change without notice.



# Replaces John Deere 7500 Reel Mower Parts

Verti-Cut Reel & Frame



Item No	R&R Part No.	OEM Part No.	Description	Qty Req	Order Quantity
16	<b>R24H1682</b>	24H1682	Washer - 13/32 x 7/8 x 1/8	1	
17	<b>R11M7012</b>	11M7012	Pin - Cotter 1/8 x 5/8	1	
18	<b>RH135891</b>	H135891	Locknut - 10mm x 1.5 Flanged 10.9	6	
<i>Detail Description: High Strength:</i>					
19	<b>RET17715</b>	ET17715	Shaft - Vertical Mower	1	
20	<b>RET17713</b>	ET17713	Spacer - Vertical Mower Shaft	81	
21	<b>R150230</b>		Spacer - 1/2 Ventilated V-Cut	1	
22	<b>RC17964</b>	C17964	Ring - Retaining HD	1	
23	<b>R24H1513</b>	24H1513	Washer	1	
24	<b>RET17053</b>	ET17053	Nut - 1-1/8-7 Jam Incl Set Screw	1	
25	<b>R19M7865</b>	19M7865	Bolt - Hex Washer M8 x 16	2	
26	<b>R14M7298</b>	14M7298	Nut - 8mm x 1.25 Flanged	6	
27	<b>RET17914</b>	ET17914	Rubber Isolator - Verticut	1	
28	<b>R03M7232</b>	03M7232	Bolt - Carriage M6-1.0 x 25	3	
29	<b>R14M7397</b>	14M7397, 14M7463	Locknut - 6mm x 1.0 ESNA Flanged	3	
30	<b>RMT3015</b>	MT3015	Bracket - RH - Extended	2	
31	<b>R03M7184</b>	03M7184	Bolt - Carriage M8	4	
32	<b>R22H1004</b>	19H3003	Screw - Set 1/4-28 x 1/2	4	
33	<b>R3219-1</b>	14H860	Nut - 1/4-28	4	
34	<b>RAMT5112</b>	AMT5112	Bracket - Roller RH Rear	1	
35	<b>RAMT5113</b>	AMT5113	Bracket - Roller LH Rear	1	

All original equipment manufacturers names and part numbers are used for identification purposes only, and we are in no way implying that our products are original equipment parts. Prices subject to change without notice.



# Replaces John Deere 7500 Reel Mower Parts

Verti-Cut Reel & Frame



Item No	R&R Part No.	OEM Part No.	Description	Qty Req	Order Quantity
36	<b>R03M7307</b>	03M7307	Bolt - Carriage M10	2	
38	<b>R24H1307</b>	24H1307	Washer - Flat 13/32 x 1 x 1/16	2	
39	<b>R14M7517</b>	14M7517	Locknut - 10mm x 1.5 ESNA	2	
40	<b>R19M7383</b>	19M7383	Bolt - Rear Roller Adj 55 mm Long	2	
41	<b>R3245-35</b>	22H841	Screw - Set 1/4-28 x 1/4	1	
42	<b>RU45916</b>	14M7298, U45916	Locknut - 10-24 ESNA	1	
43	<b>RAET10139</b>	AET10139	Cable - Roller Scraper	1	
44	<b>RAET10111</b>	AET10111, AMT2876	Roller - Smooth Tubular Steel	1	
<i>Detail Description: This tubular steel roller uses greasable "water-pump" style bearings.:</i>					
45	<b>RAMT1060</b>	AMT1060	Roller - Smooth Tubular Steel	1	
<i>Detail Description: This tubular steel roller uses greasable "water-pump" style bearings.:</i>					
46	<b>RMT6483</b>	MT6483	Nut - Adjusting Rear Roller	2	
47	<b>RET14592</b>	ET14592	Spring - Reel Bearing	1	
48	<b>R453011</b>	24M7096	Washer - Flat 3/8 SAE Y/Zinc	2	
49	<b>RAMT2261</b>	AMT2261	Kit - Bolt w/Clip	2	
50	<b>RMT6517</b>	MT6517	Label - Warning	2	
51	<b>R14M7296</b>	14M7296	Nut - 10mm x 1.5 Flanged	2	
52	<b>RAMT2608</b>	AMT2608	Shield - Verticut	1	
53	<b>R500534</b>		Bearing - with Cup	2	
<i>Detail Description: Kit includes: 1 ea R254-78- Bearing Cone &amp; R254-79 Bearing Cone:</i>					

All original equipment manufacturers names and part numbers are used for identification purposes only, and we are in no way implying that our products are original equipment parts. Prices subject to change without notice.