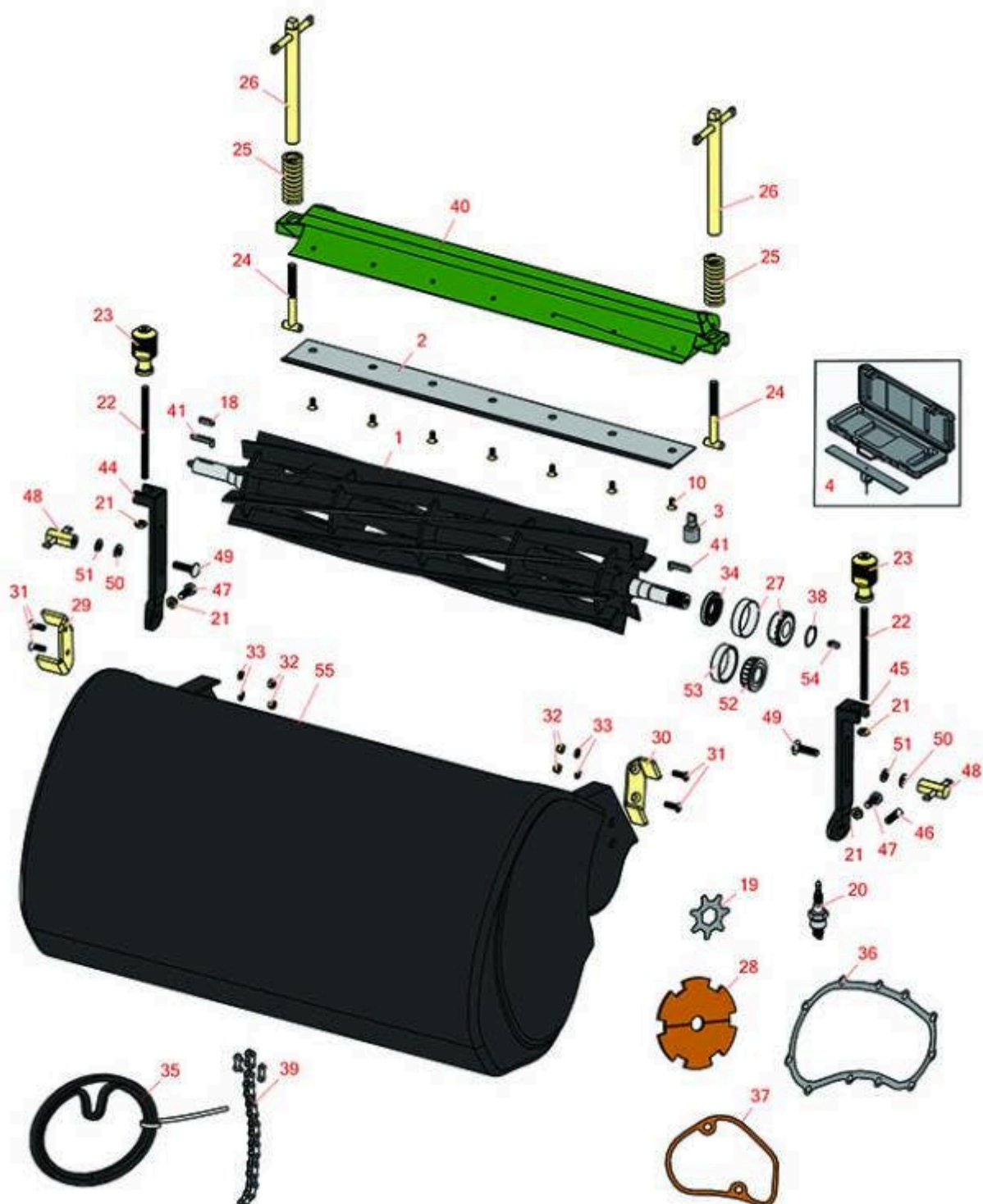




# Replaces John Deere 22 Greens Mower

## Parts

Cutting Unit  
Reel & Bedknife



All original equipment manufacturers names and part numbers are used for identification purposes only, and we are in no way implying that our products are original equipment parts. Prices subject to change without notice.



# Replaces John Deere 22 Greens Mower Parts

Cutting Unit  
Reel & Bedknife



Item No	R&R Part No.	OEM Part No.	Description	Qty Req	Order Quantity
---------	--------------	--------------	-------------	---------	----------------

## R&R Reels, Lifetime Guaranteed

1	RET11055	AMT2867, AMT536, ET11055	Reel - 9 Blade 22in	1	
---	----------	--------------------------------	---------------------	---	--

*Detail Description: R&R Reel blades are expertly crafted from premium high carbon-boron alloy steel, heat-treated to perfectly complement both R&R and OEM bedknives. Each reel undergoes precision cylindrical grinding on bearing surfaces, followed by relief grinding for optimal performance. Advanced computer balancing ensures extended reel and bearing life. Backed by our lifetime guarantee against defects in materials and craftsmanship under normal use, R&R Reels deliver unmatched durability and cutting precision you can trust.:*

1	RET13457	ET13457	Reel - 9 Blade	1	
---	----------	---------	----------------	---	--

*Detail Description: R&R Reel blades are expertly crafted from premium high carbon-boron alloy steel, heat-treated to perfectly complement both R&R and OEM bedknives. Each reel undergoes precision cylindrical grinding on bearing surfaces, followed by relief grinding for optimal performance. Advanced computer balancing ensures extended reel and bearing life. Backed by our lifetime guarantee against defects in materials and craftsmanship under normal use, R&R Reels deliver unmatched durability and cutting precision you can trust.:*

1	R101325		Reel - 11 Blade	1	
---	---------	--	-----------------	---	--

*Detail Description: R&R Reel blades are manufactured from high carbon-boron alloy steel and then hardened to RC46-49 to match the temper of our bedknives and original equipment bedknives. All R&R Reels are cylindrically ground on bearing surfaces and then relief ground. Reels are then precision computer balanced for extended bearing and reel life. R&R Products Reels are guaranteed against defects in material and workmanship for the life of the reel under normal use.:*

1	R101326		Reel - 11 Blade	1	
---	---------	--	-----------------	---	--

*Detail Description: R&R Reel blades are manufactured from high carbon-boron alloy steel and then hardened to RC46-49 to match the temper of our bedknives and original equipment bedknives. All R&R Reels are cylindrically ground on bearing surfaces and then relief ground. Reels are then precision computer balanced for extended bearing and reel life. R&R Products Reels are guaranteed against defects in material and workmanship for the life of the reel under normal use.:*

## R&R Bedknives, Lifetime Guaranteed

2	RET17534	ET17534	Bedknife - 22in Tournament-.098 Min HOC	1	
---	----------	---------	---	---	--

All original equipment manufacturers names and part numbers are used for identification purposes only, and we are in no way implying that our products are original equipment parts. Prices subject to change without notice.



# Replaces John Deere 22 Greens Mower

## Parts

Cutting Unit

Reel & Bedknife



Item No	R&R Part No.	OEM Part No.	Description	Qty Req	Order Quantity
---------	--------------	--------------	-------------	---------	----------------

*Detail Description: R&R Bedknives are manufactured from high carbon-boron alloy steel and then hardened to RC46-49 to match the temper of our reel blades and original equipment reels. Bedknives are surface ground on the top and front edge and straightened three times before being packaged with oil for rust prevention. All R&R Bedknives now have an increased front edge grind for added life. All R&R Bedknives are guaranteed against defects in material and workmanship under normal use for the life of the part.:*

2	<b>R101277</b>	ET10177	Bedknife - Super Thin 3/32	1	
---	----------------	---------	----------------------------	---	--

*Detail Description: R&R Bedknives are manufactured from high carbon-boron alloy steel and then hardened to RC46-49 to match the temper of our reel blades and original equipment reels. Bedknives are surface ground on the top and front edge and straightened three times before being packaged with oil for rust prevention. All R&R Bedknives now have an increased front edge grind for added life. All R&R Bedknives are guaranteed against defects in material and workmanship under normal use for the life of the part.:*

2	<b>R101276</b>		Bedknife - Thin 1/8	1	
---	----------------	--	---------------------	---	--

*Detail Description: R&R Bedknives are manufactured from high carbon-boron alloy steel and then hardened to RC46-49 to match the temper of our reel blades and original equipment reels. Bedknives are surface ground on the top and front edge and straightened three times before being packaged with oil for rust prevention. All R&R Bedknives now have an increased front edge grind for added life. All R&R Bedknives are guaranteed against defects in material and workmanship under normal use for the life of the part.:*

2	<b>R101275</b>	ET11066	Bedknife - Thick 3/16	1	
---	----------------	---------	-----------------------	---	--

*Detail Description: R&R Bedknives are manufactured from high carbon-boron alloy steel and then hardened to RC46-49 to match the temper of our reel blades and original equipment reels. Bedknives are surface ground on the top and front edge and straightened three times before being packaged with oil for rust prevention. All R&R Bedknives now have an increased front edge grind for added life. All R&R Bedknives are guaranteed against defects in material and workmanship under normal use for the life of the part.:*

### Service Tools

3	<b>R101278T</b>		Bedknife Screw Driver Tool	0	
---	-----------------	--	----------------------------	---	--

*Tech Note: Easily install and remove bed knife screws with the help of a ratchet. Tool manufactured with hardened alloy steel.:*

*Detail Description: Easily install and remove bed knife screws with the help of a ratchet. Tool manufactured with hardened alloy steel.:*

4	<b>R184</b>		Masters Gauge - Digital - Inches/Metric	0	
---	-------------	--	---	---	--

All original equipment manufacturers names and part numbers are used for identification purposes only, and we are in no way implying that our products are original equipment parts. Prices subject to change without notice.



# Replaces John Deere 22 Greens Mower

## Parts

Cutting Unit  
Reel & Bedknife



Item No	R&R Part No.	OEM Part No.	Description	Qty Req	Order Quantity
---------	--------------	--------------	-------------	---------	----------------

*Detail Description: Accurately measures desired height of cut. Easy to read digital indicator. Displays measurements in decimals and fractions, in English and Metric. 18" length.:*

4	<b>R175</b>		Masters Gauge - Inches	0	
---	-------------	--	------------------------	---	--

*Detail Description: Dial indicator accurately measures desired height of cut. Easy to use. Place the bar on front and rear rollers then push the measuring rod until it touches the bedknife edge. Hard anodized aluminum. Fits all greensmowers. Easy to read dial indicator. Displays measurements in .001" increments. 18" length.:*

### Other Parts Available

10	<b>R101278</b>	21M7194	Screw - Bedknife	7	
18	<b>RET11057</b>	ET11057	Key - Reel Shaft	1	
19	<b>R363014</b>	ET11030	Verti-Cut Blade - 2-3/8 Dia	39	
20	<b>RET12355</b>	ET12355	Plug - Spark NGK	1	
21	<b>R14M7151</b>	14M7151	Nut - Jam Roller Adj	2	
22	<b>RET15585</b>	ET11355, ET15585	Stud - Roller Adjusting	2	
23	<b>RET11021</b>	ET11021	Knob - Adjusting	0	
24	<b>RET11372</b>	ET11372	Bolt - Adjusting Bed Bar	2	
25	<b>RET11070</b>	ET11070	Spring - Bed Bar	2	
26	<b>RET11068</b>	ET11068	Handle - Adjusting RH	1	
26	<b>RET11069</b>	ET11069	Handle - Adjusting LH	1	
27	<b>RET11062</b>	ET11062	Bearing - with Cup	2	
28	<b>RET16967</b>	ET16967	Disc - Clutch Set/2	1	
29	<b>RET11112</b>	ET11112	Bracket - RH	1	
30	<b>RET11113</b>	ET11113	Bracket - LH	1	

All original equipment manufacturers names and part numbers are used for identification purposes only, and we are in no way implying that our products are original equipment parts. Prices subject to change without notice.



# Replaces John Deere 22 Greens Mower Parts

*Cutting Unit  
Reel & Bedknife*



Item No	R&R Part No.	OEM Part No.	Description	Qty Req	Order Quantity
31	<b>R21M7326</b>	21M7326	Screw - M6 x 20mm	4	
32	<b>RE68605</b>	E68605	Locknut - 6mm	4	
33	<b>R24M7139</b>	24M7139	Washer - Flat 6mm	4	
34	<b>RET11063</b>	ET11063	Seal - Reel	2	
35	<b>RAET11255</b>	AET11255, ET11002	Belt - Matched Set of 2	1	
36	<b>RET11151</b>	ET11151	Gasket - Differential	1	
37	<b>RET11043</b>	ET11043	Gasket - V-Cut Housing	1	
38	<b>R40M7080</b>	40M7080, ET11059	Ring - Snap	1	
39	<b>RAMT1419</b>	AMT1419, ET11115	Chain	1	
39	<b>RET11123</b>	ET11123	Chain	1	
39	<b>RET11148</b>	ET11148	Chain - Differential	1	
39	<b>RET13466</b>	ET13466	Chain - Reel Drive Fits 22R	1	
39	<b>RET13490</b>	ET13490	Chain - Diff Fits 22R Only	1	
40	<b>RET11067</b>	ET11067	Bed Bar	1	
41	<b>RET13458</b>	ET13458	Key - Reel Shaft 22R Only	2	
44	<b>RMT5244</b>	MT5244	Bracket - Roller LH	1	
45	<b>RMT5245</b>	MT5245	Bracket - Roller RH	1	
46	<b>RA50744</b>	A50744	Screw - 8mm-1.25 x 25 Sq HD	2	
47	<b>R19M7881</b>	19M7881	Bolt - Hex HD M8-1.25 x 20	2	
48	<b>RET11356</b>	ET11356	Nut - Adjusting	2	

All original equipment manufacturers names and part numbers are used for identification purposes only, and we are in no way implying that our products are original equipment parts. Prices subject to change without notice.



# Replaces John Deere 22 Greens Mower Parts

Cutting Unit  
Reel & Bedknife



Item No	R&R Part No.	OEM Part No.	Description	Qty Req	Order Quantity
49	<b>R03M7186</b>	03M7186	Bolt - Carriage 8-1.25 x 30mm	2	
50	<b>R24M7036</b>	24M7036	Washer - Flat 8mm Zinc	2	
51	<b>R12M7065</b>	12M7065	Washer - Lock 8mm Zinc	2	
52	<b>RAMT1108</b>	AMT1108	Tapered Bearing Cone	1	
53	<b>RMT2108</b>	MT2108	Tapered Bearing Cup	1	
54	<b>R302-5</b>	JD7797, JD7842, JD7844	Fitting - Grease	2	
55	<b>RET10210</b>	ET10210	Grass Basket	1	

*Detail Description: <BR>Please note: Due to excessive air freight charges, this item will be shipped ground freight.:*

All original equipment manufacturers names and part numbers are used for identification purposes only, and we are in no way implying that our products are original equipment parts. Prices subject to change without notice.