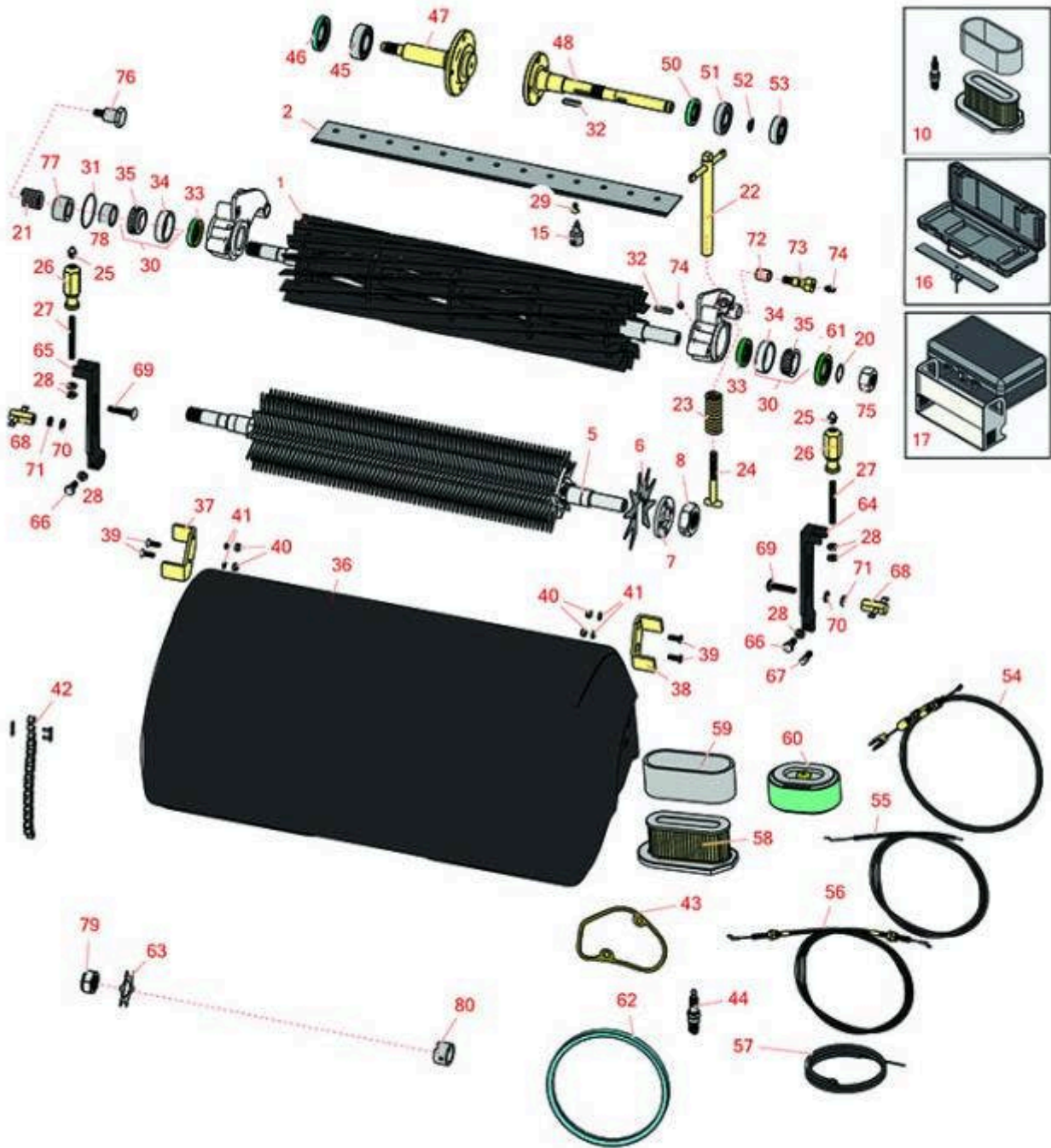




# Replaces John Deere 220 Greens Mower

## Parts

Cutting Unit  
Reel & Bedknife



All original equipment manufacturers names and part numbers are used for identification purposes only, and we are in no way implying that our products are original equipment parts. Prices subject to change without notice.



# Replaces John Deere 220 Greens Mower

## Parts

Cutting Unit

Reel & Bedknife



Item No	R&R Part No.	OEM Part No.	Description	Qty Req	Order Quantity
---------	--------------	--------------	-------------	---------	----------------

### R&R Reels, Lifetime Guaranteed

1	<b>RAMT537</b>	AMT2886, AMT537	Reel - 11 Blade 22in	1
---	----------------	--------------------	----------------------	---

*Detail Description: R&R Reel blades are expertly crafted from premium high carbon-boron alloy steel, heat-treated to perfectly complement both R&R and OEM bedknives. Each reel undergoes precision cylindrical grinding on bearing surfaces, followed by relief grinding for optimal performance. Advanced computer balancing ensures extended reel and bearing life. Backed by our lifetime guarantee against defects in materials and craftsmanship under normal use, R&R Reels deliver unmatched durability and cutting precision you can trust.:*

1	<b>R130240</b>		Reel - 14 Blade 22in	1
---	----------------	--	----------------------	---

*Detail Description: R&R Reel blades are expertly crafted from premium high carbon-boron alloy steel, heat-treated to perfectly complement both R&R and OEM bedknives. Each reel undergoes precision cylindrical grinding on bearing surfaces, followed by relief grinding for optimal performance. Advanced computer balancing ensures extended reel and bearing life. Backed by our lifetime guarantee against defects in materials and craftsmanship under normal use, R&R Reels deliver unmatched durability and cutting precision you can trust.:*

1	<b>RAMT2866</b>	AMT2279, AMT2866	Reel - 11 Blade	0
---	-----------------	---------------------	-----------------	---

*Detail Description: R&R Reel blades are expertly crafted from premium high carbon-boron alloy steel, heat-treated to perfectly complement both R&R and OEM bedknives. Each reel undergoes precision cylindrical grinding on bearing surfaces, followed by relief grinding for optimal performance. Advanced computer balancing ensures extended reel and bearing life. Backed by our lifetime guarantee against defects in materials and craftsmanship under normal use, R&R Reels deliver unmatched durability and cutting precision you can trust.:*

### R&R Bedknives, Lifetime Guaranteed

2	<b>RET17532</b>	ET11066, ET17532	Bedknife - Fairway .189 Min	1
---	-----------------	---------------------	-----------------------------	---

*Detail Description: R&R Bedknives are manufactured from high carbon-boron alloy steel and then hardened to RC46-49 to match the temper of our reel blades and original equipment reels. Bedknives are surface ground on the top and front edge and straightened three times before being packaged with oil for rust prevention. All R&R Bedknives now have an increased front edge grind for added life. All R&R Bedknives are guaranteed against defects in material and workmanship under normal use for the life of the part.:*

All original equipment manufacturers names and part numbers are used for identification purposes only, and we are in no way implying that our products are original equipment parts. Prices subject to change without notice.



# Replaces John Deere 220 Greens Mower

## Parts

Cutting Unit

Reel & Bedknife



Item No	R&R Part No.	OEM Part No.	Description	Qty Req	Order Quantity
2	<b>RMT7351</b>	ET17489, MT7351, UC19154, UC28163	Bedknife - 22in Lo-Cut .079 Min. HOC	1	

*Detail Description: R&R Bedknives are manufactured from high carbon-boron alloy steel and then hardened to RC46-49 to match the temper of our reel blades and original equipment reels. Bedknives are surface ground on the top and front edge and straightened three times before being packaged with oil for rust prevention. All R&R Bedknives now have an increased front edge grind for added life. All R&R Bedknives are guaranteed against defects in material and workmanship under normal use for the life of the part.:*

2	<b>RET17533</b>	ET14402, ET17533, ET17767, MT4869, MT7351, UC18873	Bedknife - 22in Standard- .126 Min. HOC	1	
---	-----------------	---	--	---	--

*Detail Description: R&R Bedknives are manufactured from high carbon-boron alloy steel and then hardened to RC46-49 to match the temper of our reel blades and original equipment reels. Bedknives are surface ground on the top and front edge and straightened three times before being packaged with oil for rust prevention. All R&R Bedknives now have an increased front edge grind for added life. All R&R Bedknives are guaranteed against defects in material and workmanship under normal use for the life of the part.:*

2	<b>RMT4846</b>	MT4846, MT4906, UC18877	Bedknife - Tournament	1	
---	----------------	-------------------------------	-----------------------	---	--

*Detail Description: R&R Bedknives are manufactured from high carbon-boron alloy steel and then hardened to RC46-49 to match the temper of our reel blades and original equipment reels. Bedknives are surface ground on the top and front edge and straightened three times before being packaged with oil for rust prevention. All R&R Bedknives now have an increased front edge grind for added life. All R&R Bedknives are guaranteed against defects in material and workmanship under normal use for the life of the part.:*

2	<b>RET17534</b>	ET17534	Bedknife - 22in Tounament- .098 Min HOC	1	
---	-----------------	---------	--	---	--

*Detail Description: R&R Bedknives are manufactured from high carbon-boron alloy steel and then hardened to RC46-49 to match the temper of our reel blades and original equipment reels. Bedknives are surface ground on the top and front edge and straightened three times before being packaged with oil for rust prevention. All R&R Bedknives now have an increased front edge grind for added life. All R&R Bedknives are guaranteed against defects in material and workmanship under normal use for the life of the part.:*

All original equipment manufacturers names and part numbers are used for identification purposes only, and we are in no way implying that our products are original equipment parts. Prices subject to change without notice.



# Replaces John Deere 220 Greens Mower

## Parts

Cutting Unit

Reel & Bedknife



Item No	R&R Part No.	OEM Part No.	Description	Qty Req	Order Quantity
---------	--------------	--------------	-------------	---------	----------------

### **R&R Razor Tool Steel Bedknives, Lifetime Guaranteed**

2	<b>R130115</b>		Bedknife - Razor Tool Steel - 22 Micro Cut	1	
---	----------------	--	--	---	--

*Detail Description: R&R Razor bedknives are manufactured from premium alloy tool steel steel and then hardened to RC48-51 to match the temper of our Razor reel blades and original equipment premium series reels. Bedknives are surface ground on the top and front edge and specially packaged for rust prevention. All R&R Bedknives now have an increased front edge grind for added life. All R&R Bedknives are guaranteed against defects in material and workmanship under normal use for the life of the part. You can expect up to double the life over standard bedknives.:*

2	<b>R130116</b>	MT4846, UC18877	Bedknife - Razor Tool Steel - 22 Tournament Cut	1	
---	----------------	--------------------	---	---	--

*Detail Description: R&R Razor bedknives are manufactured from premium alloy tool steel steel and then hardened to RC48-51 to match the temper of our Razor reel blades and original equipment premium series reels. Bedknives are surface ground on the top and front edge and specially packaged for rust prevention. All R&R Bedknives now have an increased front edge grind for added life. All R&R Bedknives are guaranteed against defects in material and workmanship under normal use for the life of the part. You can expect up to double the life over standard bedknives.:*

### **Vertical Reel to fit 220 & 220A**

5	<b>R130141</b>		Shaft - V-Cut	1	
---	----------------	--	---------------	---	--

6	<b>R101160</b>		Verti-Cut Blade - Fits 22 Gm	73	
---	----------------	--	------------------------------	----	--

7	<b>R352221</b>		Spacer - Nylon V-Cut Shaft	74	
---	----------------	--	----------------------------	----	--

8	<b>R352437</b>		Nut - V-Cut Shaft	1	
---	----------------	--	-------------------	---	--

### **Overhaul Kits**

10	<b>R30067</b>		Filter Kit - 400 Hour Maintenance	1	
----	---------------	--	-----------------------------------	---	--

*Detail Description: Includes: 1 ea: RAK11013-2132 Air Filter, RAK11013-2133 Air Filter & RN7734 NGK Spark Plug:*

### **Service Tools**

15	<b>R101278T</b>		Bedknife Screw Driver Tool	1	
----	-----------------	--	----------------------------	---	--

All original equipment manufacturers names and part numbers are used for identification purposes only, and we are in no way implying that our products are original equipment parts. Prices subject to change without notice.



# Replaces John Deere 220 Greens Mower

## Parts

Cutting Unit

Reel & Bedknife



Item No	R&R Part No.	OEM Part No.	Description	Qty Req	Order Quantity
---------	--------------	--------------	-------------	---------	----------------

*Tech Note: Easily install and remove bed knife screws with the help of a ratchet. Tool manufactured with hardened alloy steel.:*

*Detail Description: Easily install and remove bed knife screws with the help of a ratchet. Tool manufactured with hardened alloy steel.:*

16	<b>R184</b>		Masters Gauge - Digital - Inches/Metric	1	
----	-------------	--	---	---	--

*Detail Description: Accurately measures desired height of cut. Easy to read digital indicator. Displays measurements in decimals and fractions, in English and Metric. 18" length.:*

16	<b>R175</b>		Masters Gauge - Inches	1	
----	-------------	--	------------------------	---	--

*Detail Description: Dial indicator accurately measures desired height of cut. Easy to use. Place the bar on front and rear rollers then push the measuring rod until it touches the bedknife edge. Hard anodized aluminum. Fits all greensmowers. Easy to read dial indicator. Displays measurements in .001" increments. 18" length.:*

17	<b>RP508</b>		Turf Evaluation and Height of Cut Prism Tool	1	
----	--------------	--	--	---	--

*Detail Description: Measure actual turfgrass height of cut, as well as, smoothness and quality of cut, on your greens to 100th of an inch. This impressive Height of Cut Prism Gauge is designed with a solid glass prism in a stainless steel frame. Graduated lines show 1/8th, 1/10th and 1/16th (.002 lines) and 1 mm intervals with grass measurements up to 1-5/8 inches or 40 mm. tall. Complete with protective case. Measures inches and metric.:*

### Other Parts Available

20	<b>R40M7080</b>	40M7080, ET11059	Ring - Snap	1	
----	-----------------	------------------	-------------	---	--

21	<b>RET11053</b>	ET11053	Spring - Reel	1	
----	-----------------	---------	---------------	---	--

22	<b>RET11068</b>	ET11068	Handle - Adjusting RH	1	
----	-----------------	---------	-----------------------	---	--

22	<b>RET11069</b>	ET11069	Handle - Adjusting LH	1	
----	-----------------	---------	-----------------------	---	--

23	<b>RET11070</b>	ET11070	Spring - Bed Bar	2	
----	-----------------	---------	------------------	---	--

24	<b>RET11372</b>	ET11372	Bolt - Adjusting Bed Bar	2	
----	-----------------	---------	--------------------------	---	--

All original equipment manufacturers names and part numbers are used for identification purposes only, and we are in no way implying that our products are original equipment parts. Prices subject to change without notice.



# Replaces John Deere 220 Greens Mower

## Parts

Cutting Unit

Reel & Bedknife



Item No	R&R Part No.	OEM Part No.	Description	Qty Req	Order Quantity
25	<b>R471219</b>	471219, 471231, JD7759, JD7798	Zerk - Grease	2	
26	<b>RMT1087</b>	MT1087	Knob - Adjusting Roller	2	
27	<b>RMT1088</b>	MT1088	Stud - Roller Adj.	2	
28	<b>R14M7151</b>	14M7151	Nut - Jam Roller Adj	6	
29	<b>R101278</b>	21M7194	Screw - Bedknife	13	
30	<b>R500610</b>	AMT1108	Tapered Bearing Set - Cup and Cone	2	
<i>Detail Description: Includes:RAMT1108 &amp; RMT2108:</i>					
31	<b>RM44162</b>	M44162	O-Ring - Reel	1	
32	<b>R49M7049</b>	49M7049	Key - 5mm x 22mm	1	
33	<b>RMT1160</b>	MT1160	Seal - Reel	2	
34	<b>RMT2108</b>	MT2108	Tapered Bearing Cup	2	
35	<b>RAMT1108</b>	AMT1108	Tapered Bearing Cone	2	
36	<b>RET10210</b>	ET10210	Grass Basket	1	
<i>Detail Description: &lt;BR&gt;Please note: Due to excessive air freight charges, this item will be shipped ground freight.:</i>					
37	<b>RET11112</b>	ET11112	Bracket - RH	1	
38	<b>RET11113</b>	ET11113	Bracket - LH	1	
39	<b>R21M7326</b>	21M7326	Screw - M6 x 20mm	4	
40	<b>RE68605</b>	E68605	Locknut - 6mm	4	
41	<b>R24M7139</b>	24M7139	Washer - Flat 6mm	4	

All original equipment manufacturers names and part numbers are used for identification purposes only, and we are in no way implying that our products are original equipment parts. Prices subject to change without notice.



# Replaces John Deere 220 Greens Mower

## Parts

*Cutting Unit  
Reel & Bedknife*



Item No	R&R Part No.	OEM Part No.	Description	Qty Req	Order Quantity
42	<b>RAMT1418</b>	AMT1418, AMT734	Chain	1	
42	<b>RAMT1419</b>	AMT1419, ET11115	Chain	2	
42	<b>RET11148</b>	ET11148	Chain - Differential	1	
43	<b>RET11043</b>	ET11043	Gasket - V-Cut Housing	1	
44	<b>RN7734</b>	M123089, M802138	NGK Spark Plug - BPR5ES	1	
44	<b>RN7131</b>	M128206	NGK Spark Plug - BPR6ES	1	
45	<b>R345050</b>	AZ20217	Bearing	2	
46	<b>RET10285</b>	ET10285	Seal	2	
47	<b>RET11081</b>	ET11081	Spindle - Traction Roller	1	
48	<b>RET11075</b>	ET11075	Shaft - Rear Traction Roller	2	
50	<b>RET11095</b>	ET11095	Seal	2	
51	<b>RA203604</b>	ET11094	Bearing	2	
52	<b>R40M1863</b>	40M1863	Ring - Snap	2	
53	<b>RA203603</b>	JD8535	Bearing	2	
54	<b>RAMT585</b>	AMT585	Cable - Clutch	1	
55	<b>RAMT586</b>	AMT586	Control - Throttle	1	
56	<b>RAMT592</b>	AMT592	Cable - Brake	1	
57	<b>RAMT1680</b>	AMT1680	Control - Throttle	1	
58	<b>RAK11013-2132</b>	PT18389	Kawasaki Element-Air Filter	1	
58	<b>RRF10182</b>	PT18389, PT18390	SilverGuard Air Filter	1	

All original equipment manufacturers names and part numbers are used for identification purposes only, and we are in no way implying that our products are original equipment parts. Prices subject to change without notice.



# Replaces John Deere 220 Greens Mower

## Parts

*Cutting Unit  
Reel & Bedknife*



Item No	R&R Part No.	OEM Part No.	Description	Qty Req	Order Quantity
59	<b>RAK11013-2133</b>	PT18390	Kawasaki Pre Cleaner Foam - Air Filter	1	
59	<b>RRF10410</b>	AM123909, PT18389	SilverGuard Foam Filter	1	
60	<b>RAM123909</b>	AM123909	Filter - Air with Foam	1	
61	<b>RET11073</b>	ET11073	Seal - Reel Outer	1	
62	<b>RAMT1306</b>	AMT1306	Belt - Matched Set/2	1	
63	<b>RET14707</b>	ET14707	Verti-Cut Blade - .025 x 2.375	60	
63	<b>RET14707C</b>		Verti-Cut Blade - .025 x 2.375 Carbide Tipped	60	
64	<b>RMT5244</b>	MT5244	Bracket - Roller LH	1	
65	<b>RMT5245</b>	MT5245	Bracket - Roller RH	1	
66	<b>R19M7881</b>	19M7881	Bolt - Hex HD M8-1.25 x 20	2	
67	<b>RA50744</b>	A50744	Screw - 8mm-1.25 x 25 Sq HD	2	
68	<b>RET11356</b>	ET11356	Nut - Adjusting	2	
69	<b>R03M7186</b>	03M7186	Bolt - Carriage 8-1.25 x 30mm	2	
70	<b>R24M7036</b>	24M7036	Washer - Flat 8mm Zinc	2	
71	<b>R12M7065</b>	12M7065	Washer - Lock 8mm Zinc	2	
72	<b>RP44946</b>	P44946	Bushing - Bronze	2	
73	<b>RET11371</b>	ET11371	Screw - Special	2	
74	<b>R302-5</b>	JD7797, JD7842, JD7844	Fitting - Grease	4	
75	<b>R14M7306</b>	14M7306	Nut - M20-1.5	1	

All original equipment manufacturers names and part numbers are used for identification purposes only, and we are in no way implying that our products are original equipment parts. Prices subject to change without notice.





# Replaces John Deere 220 Greens Mower

## Parts

*Cutting Unit*

*Reel & Bedknife*



Item No	R&R Part No.	OEM Part No.	Description	Qty Req	Order Quantity
76	<b>RET11367</b>	ET11367	Cap Screw - Special	1	
77	<b>RET11464</b>	ET11464	Spacer	1	
78	<b>RET11368</b>	ET11368	Spacer	1	
79	<b>RN198341</b>	N198341	Nut - Nyloc 7/8-14	1	
80	<b>RET14917</b>	ET14917	Spacer	1	

All original equipment manufacturers names and part numbers are used for identification purposes only, and we are in no way implying that our products are original equipment parts. Prices subject to change without notice.