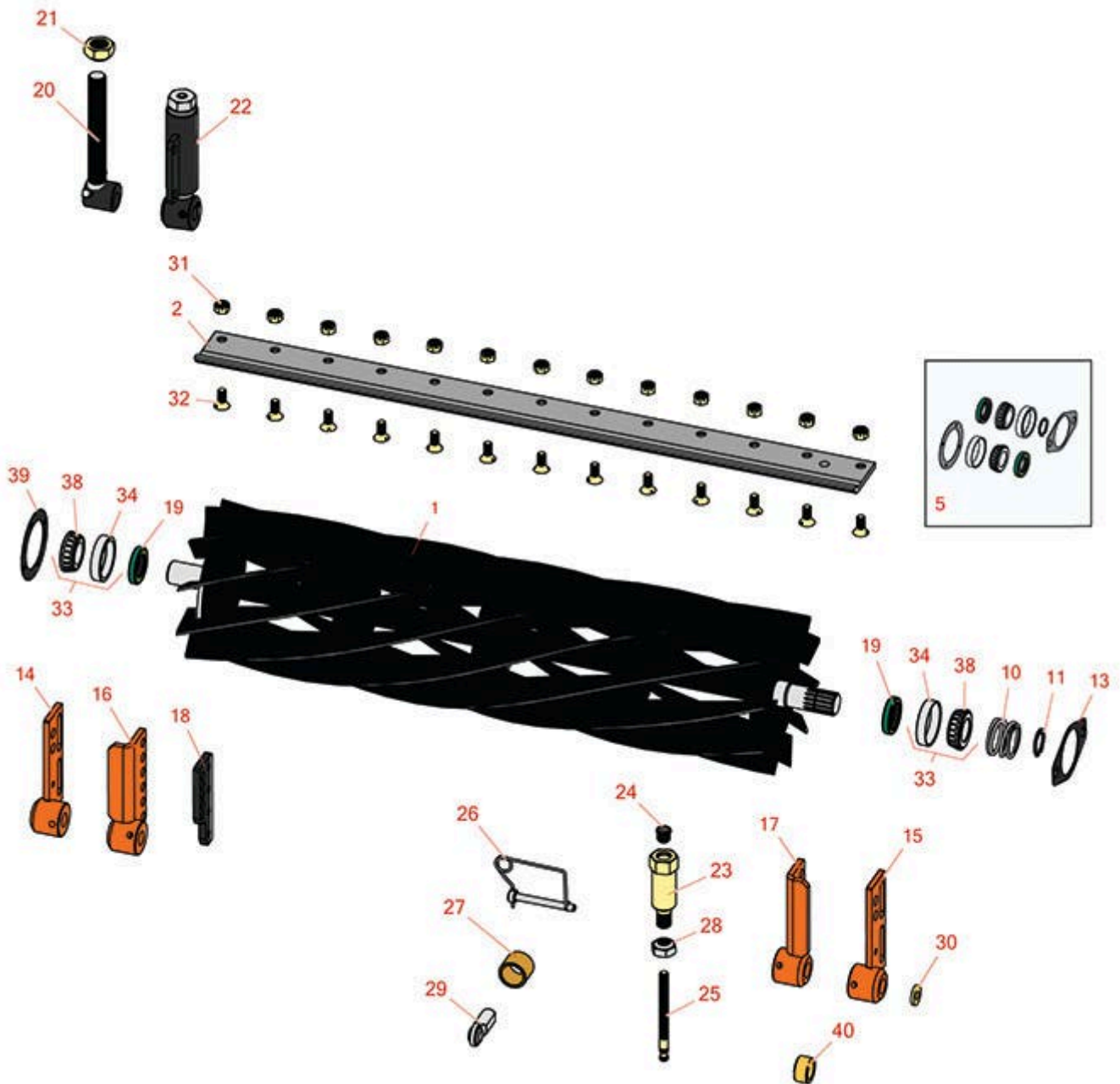




Replaces Jacobsen Tri-King 1900D Parts

Cutting Unit
Reel & Bedknife



All original equipment manufacturers names and part numbers are used for identification purposes only, and we are in no way implying that our products are original equipment parts. Prices subject to change without notice.



Replaces Jacobsen Tri-King 1900D Parts

Cutting Unit
Reel & Bedknife



Item No	R&R Part No.	OEM Part No.	Description	Qty Req	Order Quantity
---------	--------------	--------------	-------------	---------	----------------

R&R 26" Reels, Lifetime Guaranteed

1	R503274	122547, 503274	Reel - 5 Blade LH 26 in	1
---	----------------	-------------------	-------------------------	---

Tech Note: Note drive motor position when seated in the mower facing forward. This Reel should have the motor on the RIGHT hand side:

1	R503275	122546, 503275	Reel - 5 Blade RH 26 in	1
---	----------------	-------------------	-------------------------	---

Tech Note: Note drive motor position when seated in the mower facing forward. This Reel should have the motor on the LEFT hand side:

1	R5002088	5002088	Reel - 7 Blade RH 26 in	1
---	-----------------	---------	-------------------------	---

Tech Note: Note drive motor position when seated in the mower facing forward. This Reel should have the motor on the LEFT hand side:

1	R5002087	5002087	Reel - 7 Blade LH - 26 in	1
---	-----------------	---------	---------------------------	---

Tech Note: Note drive motor position when seated in the mower facing forward. This Reel should have the motor on the RIGHT hand side:

1	R503276	122549, 503276	Reel - 10 Blade LH/Center - 26 in	1
---	----------------	-------------------	-----------------------------------	---

Tech Note: Note drive motor position when seated in the mower facing forward. This Reel should have the motor on the RIGHT hand side:

1	R503277	122548, 503277	Reel - 10 Blade RH - 26 in	1
---	----------------	-------------------	----------------------------	---

Tech Note: Note drive motor position when seated in the mower facing forward. This Reel should have the motor on the LEFT hand side:

R&R 30" Reels, Lifetime Guaranteed

1	R503359	503359	Reel - 5 Blade LH/Center - 30 in	1
---	----------------	--------	----------------------------------	---

Tech Note: Note drive motor position when seated in the mower facing forward. This Reel should have the motor on the RIGHT hand side:

1	R503360	503360	Reel - 5 Blade RH 30 in	1
---	----------------	--------	-------------------------	---

All original equipment manufacturers names and part numbers are used for identification purposes only, and we are in no way implying that our products are original equipment parts. Prices subject to change without notice.



Replaces Jacobsen Tri-King 1900D Parts

Cutting Unit
Reel & Bedknife



Item No	R&R Part No.	OEM Part No.	Description	Qty Req	Order Quantity
---------	--------------	--------------	-------------	---------	----------------

Tech Note: Note drive motor position when seated in the mower facing forward. This Reel should have the motor on the LEFT hand side:

1	R5002090	5002090	Reel - 7 Blade RH 30 in	1
---	-----------------	---------	-------------------------	---

Tech Note: Note drive motor position when seated in the mower facing forward. This Reel should have the motor on the LEFT hand side:

1	R5002089	5002089	Reel - 7 Blade LH - 30 in	1
---	-----------------	---------	---------------------------	---

Tech Note: Note drive motor position when seated in the mower facing forward. This Reel should have the motor on the RIGHT hand side:

1	R503361	503361	Reel - 10 Blade LH/Center - 30 in	1
---	----------------	--------	-----------------------------------	---

Tech Note: Note drive motor position when seated in the mower facing forward. This Reel should have the motor on the RIGHT hand side:

1	R503362	503362	Reel - 10 Blade RH - 30 in	1
---	----------------	--------	----------------------------	---

Tech Note: Note drive motor position when seated in the mower facing forward. This Reel should have the motor on the LEFT hand side:

R&R Bedknives, Lifetime Guaranteed

2	R503550	331692, 503363, 503550	Bedknife - 30 in (13 Hole)	1
---	----------------	------------------------------	----------------------------	---

2	R3000249	3000249, 336419, 554284	Bedknife - 7/16 - 26 Inch	1
---	-----------------	-------------------------------	---------------------------	---

Overhaul Kits & Service Tools

5	R100132		Overhaul Kit - Cutting Unit	1
---	----------------	--	-----------------------------	---

Tech Note: Includes 2 ea.: R254-72 Bearing Cups, R254-94 Bearing Cones & R337593 Seals; 1 ea.: R364777 Gasket, R364147 Gasket & R458039 Retaining Ring:

Other Parts Available

10	R364148	364148	Spring - Reel Brg Tension	1
----	----------------	--------	---------------------------	---

All original equipment manufacturers names and part numbers are used for identification purposes only, and we are in no way implying that our products are original equipment parts. Prices subject to change without notice.



Replaces Jacobsen Tri-King 1900D Parts

Cutting Unit
Reel & Bedknife



Item No	R&R Part No.	OEM Part No.	Description	Qty Req	Order Quantity
11	R458039	458039	Ring - Retaining	1	
13	R364777	364777	Gasket - Motor End	1	
14	R132312	132312	Bracket - Roller RH	1	
15	R132313	132313	Bracket - Roller LH	1	
16	R132028	132028	Bracket - Front H.O.C. RH	1	
17	R132029	132029	Bracket - Front H.O.C. LH	1	
18	R338859	338859	Plate - Backup Roller Bracket	1	
19	R337593	3000983, 337593	Seal	2	
20	R132680	132680	Adjusting - Assy Rear Roller	2	
21	R3000313	3000313, 366833	Nut - Roller Adjusting	4	
22	R131879	131879	Bracket Adj Assy - Rear Roller	2	
23	R3003611	3003611	Handle - Adjusting 3/8-24 Thread	2	
24	R472519	472519	Plug - Adjusting Handle	2	
25	R3004189	3004189	Screw - Adjusting Reel 3/8-24 Thd	2	
26	R3005435	3000924, 3005435	Pin - Quick Release Swivel Hous.	1	
27	R364140	364140	Bushing	2	
<i>Tech Note: Pull Frame:</i>					
28	R445718	445718, 445801	Locknut - 5/8-18 All Metal	2	
29	R366974	366974	Bearing - Rod End	2	
30	R366653	366653	Spacer	2	

All original equipment manufacturers names and part numbers are used for identification purposes only, and we are in no way implying that our products are original equipment parts. Prices subject to change without notice.



Replaces Jacobsen Tri-King 1900D Parts

*Cutting Unit
Reel & Bedknife*



Item No	R&R Part No.	OEM Part No.	Description	Qty Req	Order Quantity
31	R101271	445684	Nut - Bedknife	13	
32	R101270	402698, 403757	Screw - Bedknife 3/8-24 x 13/16	13	
33	R500596	500596	Tapered Bearing Set - Cup and Cone	2	
34	R254-72	313456	Cup - Bearing	2	
38	R254-94	313089	Tapered Bearing Cone	2	
39	R364147	364147	Gasket - Cover	1	
40	R3005156	3005156	Sleeve - Wear Hardened	2	

All original equipment manufacturers names and part numbers are used for identification purposes only, and we are in no way implying that our products are original equipment parts. Prices subject to change without notice.