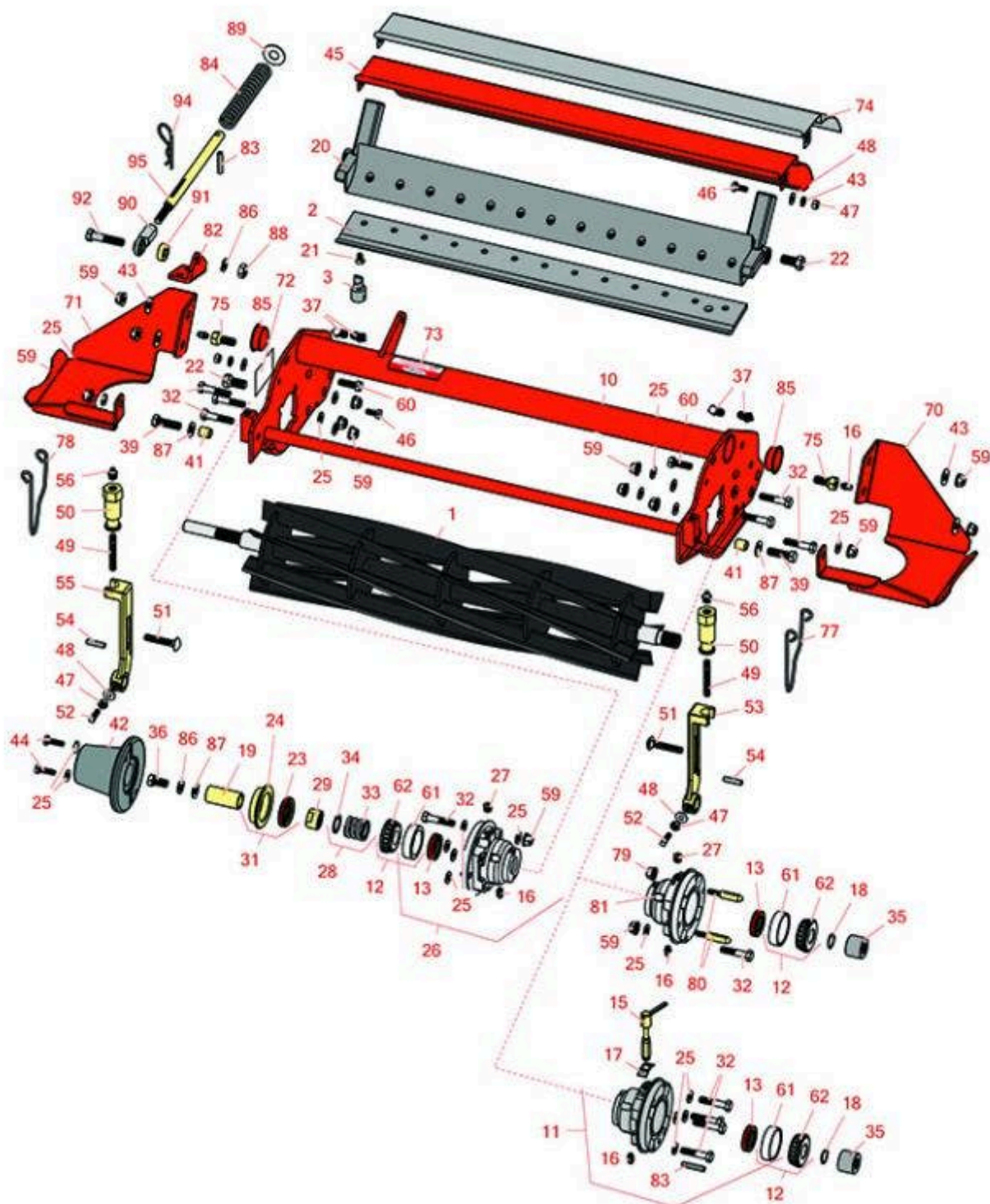




Replaces Jacobsen LF-3400 Parts

5" Reel Units

Reel & Bedknife



All original equipment manufacturers names and part numbers are used for identification purposes only, and we are in no way implying that our products are original equipment parts. Prices subject to change without notice.



Replaces Jacobsen LF-3400 Parts

5" Reel Units
Reel & Bedknife



Item No	R&R Part No.	OEM Part No.	Description	Qty Req	Order Quantity
---------	--------------	--------------	-------------	---------	----------------

R&R Reels, Lifetime Guaranteed

1	R503319	5001095, 5003053, 503319	Reel - 7 Blade LH	3	
---	----------------	--------------------------------	-------------------	---	--

Detail Description: R&R Reel blades are expertly crafted from premium high carbon-boron alloy steel, heat-treated to perfectly complement both R&R and OEM bedknives. Each reel undergoes precision cylindrical grinding on bearing surfaces, followed by relief grinding for optimal performance. Advanced computer balancing ensures extended reel and bearing life. Backed by our lifetime guarantee against defects in materials and craftsmanship under normal use, R&R Reels deliver unmatched durability and cutting precision you can trust.:

1	R503320	5001096, 5003054, 5003064, 503320	Reel - 7 Blade RH	2	
---	----------------	--	-------------------	---	--

Detail Description: R&R Reel blades are expertly crafted from premium high carbon-boron alloy steel, heat-treated to perfectly complement both R&R and OEM bedknives. Each reel undergoes precision cylindrical grinding on bearing surfaces, followed by relief grinding for optimal performance. Advanced computer balancing ensures extended reel and bearing life. Backed by our lifetime guarantee against defects in materials and craftsmanship under normal use, R&R Reels deliver unmatched durability and cutting precision you can trust.:

1	R503321	5001097, 503321	Reel - 5 Blade LH	3	
---	----------------	--------------------	-------------------	---	--

Detail Description: R&R Reel blades are expertly crafted from premium high carbon-boron alloy steel, heat-treated to perfectly complement both R&R and OEM bedknives. Each reel undergoes precision cylindrical grinding on bearing surfaces, followed by relief grinding for optimal performance. Advanced computer balancing ensures extended reel and bearing life. Backed by our lifetime guarantee against defects in materials and craftsmanship under normal use, R&R Reels deliver unmatched durability and cutting precision you can trust.:

1	R503322	5001098, 503322	Reel - 5 Blade RH	2	
---	----------------	--------------------	-------------------	---	--

Detail Description: R&R Reel blades are expertly crafted from premium high carbon-boron alloy steel, heat-treated to perfectly complement both R&R and OEM bedknives. Each reel undergoes precision cylindrical grinding on bearing surfaces, followed by relief grinding for optimal performance. Advanced computer balancing ensures extended reel and bearing life. Backed by our lifetime guarantee against defects in materials and craftsmanship under normal use, R&R Reels deliver unmatched durability and cutting precision you can trust.:

R&R Bedknives, Lifetime Guaranteed

All original equipment manufacturers names and part numbers are used for identification purposes only, and we are in no way implying that our products are original equipment parts. Prices subject to change without notice.



Replaces Jacobsen LF-3400 Parts

5" Reel Units

Reel & Bedknife



Item No	R&R Part No.	OEM Part No.	Description	Qty Req	Order Quantity
---------	--------------	--------------	-------------	---------	----------------

2	R5003150	5003150	Bedknife - Low Cut	1	
---	-----------------	---------	--------------------	---	--

Detail Description: R&R Bedknives are manufactured from high carbon-boron alloy steel and then hardened to RC46-49 to match the temper of our reel blades and original equipment reels. Bedknives are surface ground on the top and front edge and straightened three times before being packaged with oil for rust prevention. All R&R Bedknives now have an increased front edge grind for added life. All R&R Bedknives are guaranteed against defects in material and workmanship under normal use for the life of the part.:

2	R503460	503257, 503460	Bedknife - 22 in 13 Hole	1	
---	----------------	-------------------	--------------------------	---	--

Detail Description: R&R Bedknives are manufactured from high carbon-boron alloy steel and then hardened to RC46-49 to match the temper of our reel blades and original equipment reels. Bedknives are surface ground on the top and front edge and straightened three times before being packaged with oil for rust prevention. All R&R Bedknives now have an increased front edge grind for added life. All R&R Bedknives are guaranteed against defects in material and workmanship under normal use for the life of the part.:

R&R Razor Tool Steel Bedknives, Lifetime Guaranteed

2	R101523		Bedknife - Razor Tool Steel - 22 High Cut	1	
---	----------------	--	---	---	--

Detail Description: R&R Razor bedknives are manufactured from premium alloy tool steel steel and then hardened to RC48-51 to match the temper of our Razor reel blades and original equipment premium series reels. Bedknives are surface ground on the top and front edge and specially packaged for rust prevention. All R&R Bedknives now have an increased front edge grind for added life. All R&R Bedknives are guaranteed against defects in material and workmanship under normal use for the life of the part. You can expect up to double the life over standard bedknives.:

Service Tools

3	R101272T		Bedknife Screw Driver Tool	0	
---	-----------------	--	----------------------------	---	--

Tech Note: Easily install and remove bed knife screws with the help of a ratchet. Tool manufactured with hardened alloy steel.:

Detail Description: Easily install and remove bed knife screws with the help of a ratchet. Tool manufactured with hardened alloy steel.:

Other Parts Available

10	R5003087	5003087	Frame - 5 Reel	1	
----	-----------------	---------	----------------	---	--

11	R1002564	1002564	Housing - Bearing Motor End	1	
----	-----------------	---------	-----------------------------	---	--

All original equipment manufacturers names and part numbers are used for identification purposes only, and we are in no way implying that our products are original equipment parts. Prices subject to change without notice.



Replaces Jacobsen LF-3400 Parts

5" Reel Units

Reel & Bedknife



Item No	R&R Part No.	OEM Part No.	Description	Qty Req	Order Quantity
<i>Detail Description: Includes: R336962, R1002607, R302-5, R254-79, R461397 & R3005841:</i>					
12	R500534	500534, R500534	Bearing - with Cup	1	
<i>Detail Description: Kit includes: 1 ea R254-78- Bearing Cone & R254-79 Bearing Cone:</i>					
13	R336962	336962	Seal	2	
15	R1002607	1001021, 1002607	Pin - Assy Quick Release	1	
16	R302-5	302-5, 471214, 471223, 471226	Fitting - Grease	1	
17	R3005841	3005841	Spring - Vent Cover	1	
18	R458013	458013	Ring - Retaining	1	
19	R367164	367164	Spacer - Reel	1	
20	R220278	121856, 220278, 5000415	Backing Bar - Cast	1	
20	R2000068	2000068	Bed Bar	1	
21	R101272	101272, 3009138, 402578, 800813	Screw - Bedknife 1/4-20 x 1/2	13	
22	R315298	315298	Bolt - Bed Bar	2	
23	R337677	315257, 337677	Seal - Oil	1	
24	R363814	163892, 363814	Spacer - Seal	1	

All original equipment manufacturers names and part numbers are used for identification purposes only, and we are in no way implying that our products are original equipment parts. Prices subject to change without notice.



Replaces Jacobsen LF-3400 Parts

5" Reel Units

Reel & Bedknife



Item No	R&R Part No.	OEM Part No.	Description	Qty Req	Order Quantity
25	R453009	3256-23, 452004, 452006, 452008, 453009	Washer - Flat 5/16 SAE	8	
26	R164144	1000480, 163397, 164144, 2000060	Housing - Reel Bearing	1	
<i>Detail Description: Includes R336962 Seal, R302-5 Zerk, R170714 Relief Fitting & R254-79 Cup:</i>					
27	R170714	170714, 471240, 471242	Fitting - Pressure Relief	1	
28	R5002151	5002151	Hardware Kit - Spring/Washer	1	
<i>Detail Description: Includes 1 ea: R304745 Washer, R363047 Spring:</i>					
29	R364900	364900	Nut - Reel Tension	1	
31	R163398	163398, 163892	Seal - Spacer Assy	1	
32	R400192	400192	Bolt - Hex HD 5/16-18 x 1-1/2	8	
33	R363047	348846, 363047	Spring - Reel	1	
34	R304745	304745	Washer - Reel	1	
35	R3001720	3001720	Coupler - Iron - Hyd Motor	1	
36	R400294	400294	Screw - 3/8 24 x 3/4 Hex C/Zinc	1	
37	R412506	412503, 412506	Screw - Bed Bar Adjusting	4	
39	R400264	400264	Bolt - Hex HD 3/8-16 x 1-1/4	2	
41	R345510	345510	Spacer	2	
42	R2000065	2000065	Weight - Counter	1	

All original equipment manufacturers names and part numbers are used for identification purposes only, and we are in no way implying that our products are original equipment parts. Prices subject to change without notice.



Replaces Jacobsen LF-3400 Parts

5" Reel Units

Reel & Bedknife



Item No	R&R Part No.	OEM Part No.	Description	Qty Req	Order Quantity
43	R3253-3	3253-3, 446128, 446130	Washer - Lock 1/4	4	
44	R321-5	321-5, 400110	Bolt - Hex HD 1/4-20 x 7/8	2	
45	R390950	126724, 2810043, 390950	Shield - Grass	1	
46	R400106	400106	Bolt - Hex HD 1/4-20 x 5/8	2	
47	R443102	443102	Nut - 1/4-20 Yellow Zinc	4	
48	R453023	453023	Washer - Flat 1/4	2	
49	R343616	343616, 443102	Stud	10	
50	R365009	3005692, 365009, 365170, 441674	Knob - Adjusting Roller	10	
51	R441674	441674	Screw - 5/16-18 x 1-3/4 Carriage	2	
52	R352737	352737	Screw - Set 1/4 x 7/8 Sq Head	2	
53	R153980	153980, 3008438	Bracket - Front Roller	2	
54	R461256	461256	Pin - 1/4 x 1	2	
55	R153979	153979, 3008439	Bracket - Front Roller	2	
56	R471219	366852, 471219	Zerk - Grease	2	
59	R445795	445795	Nut - 5/16-18 Flanged	12	
60	R322-5	400188	Bolt - Hex HD 5/16-18 x 1	4	
61	R254-79	254-79, 4121175	Cup - Bearing	2	

All original equipment manufacturers names and part numbers are used for identification purposes only, and we are in no way implying that our products are original equipment parts. Prices subject to change without notice.



Replaces Jacobsen LF-3400 Parts

5" Reel Units
Reel & Bedknife



Item No	R&R Part No.	OEM Part No.	Description	Qty Req	Order Quantity
---------	--------------	--------------	-------------	---------	----------------

Detail Description: Use R254-79M installation mandrel to properly install race.:

62	R254-78	254-78, 385174, 4121174, 4135152	Tapered Bearing Cone	2	
70	R3008199	3008199	Skid - Motor LH Front Reel	1	
71	R3008200	3008200	Skid - Motor RH Front Reel	1	
72	R1000997	1000997	Decal - Warning	1	
73	R354083	354083, 361877, 4127335	Decal - Danger	2	
74	R2810043	2810043	Shield - Grass	1	
75	R1002224	1002224	Bolt - Rear Roller 3/8-24	2	

Detail Description: Incl Grease Zerk:

77	R2810166	2810166, 3010637	Clip - Spring Motor	1	
78	R2810165	2810165, 2810166, 3010236, 3010636	Clip - Spring Motor	1	
79	R32152-4	32152-4, 444708	Locknut - 1/4-20 All Metal	2	
80	R3010296	3010296	Pin - Motor Mounting	2	
81	R1004786	1004786	Housing - Bearing Quick Clip	1	

Detail Description: Includes: R336962, R302-5, R254-79, R3010296, R32152-4 & R170714:

82	R3008601	3008601	Bracket - Spring Holddown	1	
83	R461397	461397	Pin - Roll 1/4 x 1-1/4	1	
84	R311870	311870	Spring - Compression	1	

All original equipment manufacturers names and part numbers are used for identification purposes only, and we are in no way implying that our products are original equipment parts. Prices subject to change without notice.



Replaces Jacobsen LF-3400 Parts

5" Reel Units

Reel & Bedknife



Item No	R&R Part No.	OEM Part No.	Description	Qty Req	Order Quantity
85	R285-14		Plug - Pipe Frame	2	
86	R3254-6	3254-6, 446140, 446142	Washer - Lock 3/8	2	
87	R453011	453011	Washer - Flat 3/8 SAE Y/Zinc	1	
87	R17-1710	452008	Washer - Flat 3/8 Yellow USS	2	
88	R443110	306562, 443110, 444762	Nut - 3/8-16 Hex	1	
89	R453017	452012, 453017	Washer - Flat 1/2	1	
90	R366974	366974	Bearing - Rod End	1	
91	R352435	352435	Spacer	1	
92	R400266	400266	Bolt - Hex HD 3/8-16 x 1-1/2	1	
92	R400268	400268	Bolt - Hex HD 3/8-16 x 1-3/4	1	
94	R460312	460312	Pin - Hair Cotter	1	
95	R3008593	3008593	Shaft - Down Pressure	1	

All original equipment manufacturers names and part numbers are used for identification purposes only, and we are in no way implying that our products are original equipment parts. Prices subject to change without notice.