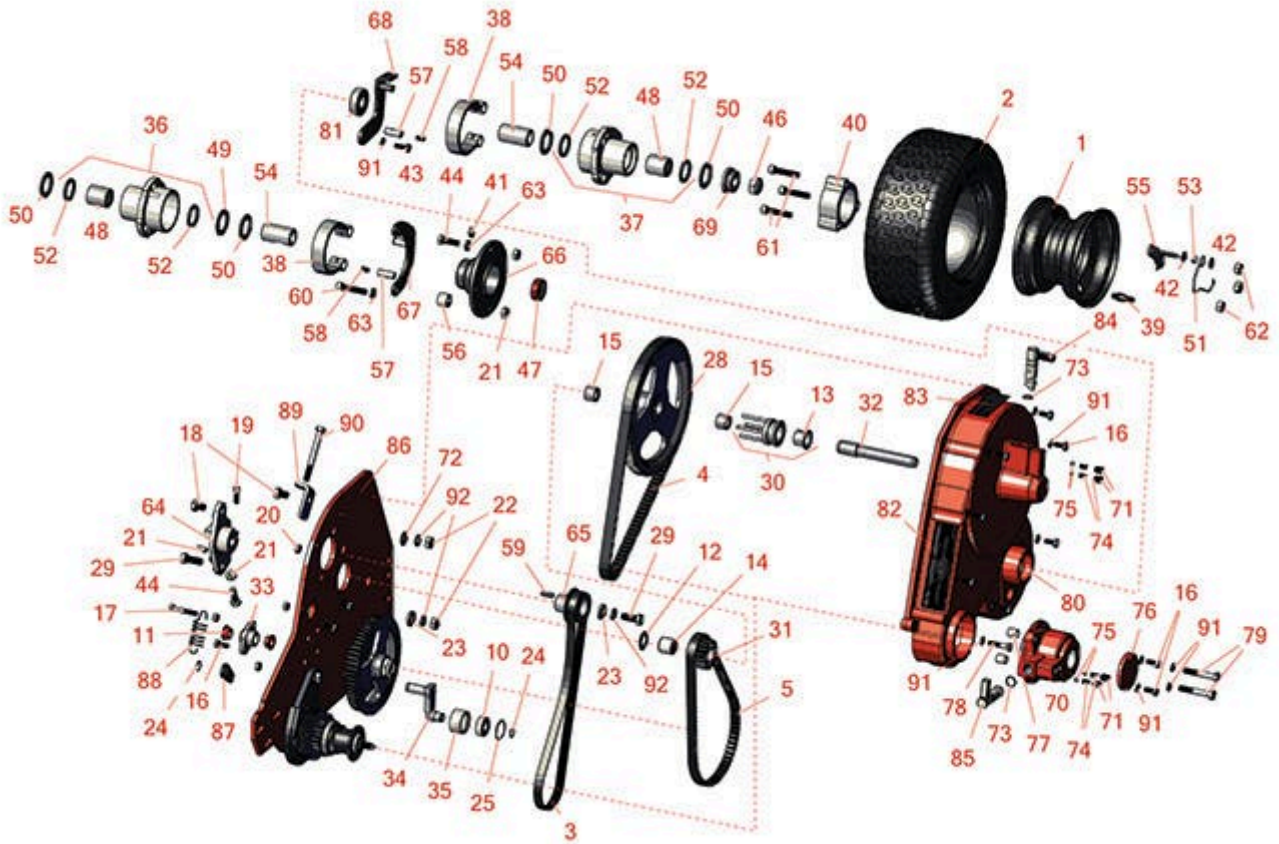




Replaces Jacobsen Greens King 518

Parts

*Traction Unit
Drive Housing*



All original equipment manufacturers names and part numbers are used for identification purposes only, and we are in no way implying that our products are original equipment parts. Prices subject to change without notice.



Replaces Jacobsen Greens King 518

Parts

Traction Unit

Drive Housing



| Item No | R&R Part No. | OEM Part No. | Description | Qty Req | Order Quantity |
|------------------------------|-------------------|------------------------------|--|---------|----------------|
| Tires | | | | | |
| 1 | R5002905 | 5002905 | Wheel Assy - 3x5 | 2 | |
| 2 | RCT5110101 | 554847 | Tire - 11x4.00-5 Nhs (2 Ply) Carlisle Turf Saver | 2 | |
| Belts | | | | | |
| 3 | R2810713 | 2810713 | Belt - 7 Rib Micro V | 1 | |
| 4 | R5001124 | 2811363 | Belt - 112 Tooth .460 Wide | 1 | |
| 5 | R5002403 | 2811071 | Belt - 80 Tooth x 17mm WIDE(.669) | 1 | |
| Other Parts Available | | | | | |
| 10 | R344545 | 344545 | Bearing - Roller Brush Brkt | 1 | |
| 11 | R352936 | 352936 | Bushing - Bronze | 2 | |
| 12 | R359864 | 359864 | Flat Washer - Hardened 5/8 x 1.100 | 0 | |
| 13 | R366725 | 366725 | Bushing - Flanged | 1 | |
| 14 | R367553 | 367553 | Bearing - Needle | 1 | |
| 15 | R367554 | 367554 | Bearing - Needle | 2 | |
| 16 | R400106 | 400106 | Bolt - Hex HD 1/4-20 x 5/8 | 12 | |
| 17 | R400116 | 400116 | Bolt - Hex HD 1/4-20 x 1-1/2 | 1 | |
| 18 | R400254 | 400254 | Bolt - Hex HD 3/8-16 x 1/2 | 2 | |
| 19 | R434031 | 434031 | Bolt - Soc HD Cap 1/4-20 x 3/4 Nyloc | 1 | |
| 20 | R443102 | 443102 | Nut - 1/4-20 Yellow Zinc | 10 | |
| 21 | R443106 | 443106 | Nut - 5/16-18 Y/Zinc Plated | 3 | |
| 22 | R443110 | 306562, 443110, 444762 | Nut - 3/8-16 Hex | 2 | |

All original equipment manufacturers names and part numbers are used for identification purposes only, and we are in no way implying that our products are original equipment parts. Prices subject to change without notice.



Replaces Jacobsen Greens King 518

Parts

Traction Unit

Drive Housing



| Item No | R&R Part No. | OEM Part No. | Description | Qty Req | Order Quantity |
|---|-----------------|-------------------|--------------------------|---------|----------------|
| 23 | R366653 | 366653 | Spacer | 2 | |
| 24 | R458006 | 458006 | Ring - Retaining | 2 | |
| 25 | R458105 | 458105 | Ring - Retaining | 1 | |
| 28 | R503685 | 503685 | Pulley - 80 Tooth | 1 | |
| 29 | RF3205 | 400188, 400262 | Bolt - Hex HD 3/8-16 x 1 | 2 | |
| 30 | R1000056 | 1000056 | Traction Clutch | 1 | |
| <i>Tech Note: Includes R366725:</i> | | | | | |
| 31 | R5002447 | 5002447 | Pulley - 18 Tooth | 1 | |
| 32 | R3001273 | 3001273 | Shaft - Belts | 1 | |
| 33 | R2810550 | 2810550 | Bracket - Idler | 1 | |
| 34 | R2809665 | 2809665 | Idler - Arm | 1 | |
| 35 | R2809666 | 2809666 | Pulley - Belt Idler | 1 | |
| 36 | R1000476 | 1000476 | Hub Assy - RH | 1 | |
| <i>Tech Note: Includes R338766 & R366705:</i> | | | | | |
| 37 | R1000477 | 1000477 | Hub Assy - LH | 1 | |
| <i>Tech Note: Includes R338766 & R366705:</i> | | | | | |
| 38 | R164056 | 164056 | Band - Brake | 2 | |
| 39 | R232-27 | 232-27, 360111 | Stem - Valve w/ Cap | 2 | |
| 40 | R271920 | 271920 | Spacer - Wheel | 2 | |

All original equipment manufacturers names and part numbers are used for identification purposes only, and we are in no way implying that our products are original equipment parts. Prices subject to change without notice.



Replaces Jacobsen Greens King 518

Parts

Traction Unit

Drive Housing



| Item No | R&R Part No. | OEM Part No. | Description | Qty Req | Order Quantity |
|---------|-----------------|---|---------------------------------------|---------|----------------|
| 41 | R302-5 | 302-5, 471214, 471223, 471226 | Fitting - Grease | 1 | |
| 42 | R453009 | 3256-23, 452004, 452006, 452008, 453009 | Washer - Flat 5/16 SAE | 12 | |
| 43 | R321-4 | 321-4, 400108 | Bolt - Hex HD 1/4-20 x 3/4 | 2 | |
| 44 | R322-5 | 400188 | Bolt - Hex HD 5/16-18 x 1 | 2 | |
| 46 | R3296-33 | 444820, 445718, 445801 | Locknut - 5/8-18 ESNA Jam | 2 | |
| 47 | R337678 | 337678, 365753 | Seal - Clutch Shaft Bearing | 1 | |
| 48 | R338766 | 338766 | Bearing - Clutch Differential Shaft | 1 | |
| 49 | R361451 | 361451 | Flat Washer 1 x 1-1/2 Hardened Thrust | 1 | |
| 50 | R366697 | 366697 | Spacer - Bronze Thrust | 4 | |
| 51 | R366704 | 366704 | Spring - Wheel Lock | 2 | |
| 52 | R366705 | 366705 | Seal - Grease | 2 | |
| 53 | R366716 | 366716 | Spacer - Wheel | 6 | |
| 54 | R366717 | 366717 | Clutch Sleeve - Wheel | 2 | |
| 55 | R366719 | 366719 | Latch - Wheel | 2 | |
| 56 | R366737 | 366737 | Spacer - Wheel | 2 | |
| 57 | R366742 | 366742 | Pivot Pin w/Set Screw - Brake Band | 2 | |
| 58 | R415513 | 415513 | Screw - Set 1/4-20 x 1/2 Cup Pt | 2 | |

All original equipment manufacturers names and part numbers are used for identification purposes only, and we are in no way implying that our products are original equipment parts. Prices subject to change without notice.



Replaces Jacobsen Greens King 518

Parts

Traction Unit

Drive Housing



| Item No | R&R Part No. | OEM Part No. | Description | Qty Req | Order Quantity |
|---------|-----------------|-------------------|--------------------------------|---------|----------------|
| 59 | R367082 | 367082 | Key - 3/16 Sq. x 3/4 | 1 | |
| 60 | R434032 | 434032 | Screw - Soc HD 5/16-18 x 1-3/4 | 2 | |
| 61 | R434049 | 434049 | Bolt - Soc HD Cap 5/16-18 x 2 | 6 | |
| 62 | R444718 | 444718 | Nut - 5/16-18 Center Lock YZ | 6 | |
| 63 | R446136 | 446134, 446136 | Washer - Lock 5/16 Zinc | 6 | |
| 64 | R2000148 | 2000148 | Bracket - Bearing | 1 | |
| 65 | R3007847 | 3007847 | Pulley - 7 Rib Micro V | 1 | |
| 66 | R132658 | 132658 | Housing - Parking Brake | 1 | |
| 67 | R132663 | 132663 | Bracket - Brake Mounting RH | 1 | |
| 68 | R164063 | 164063 | Bracket - Brake Mounting LH | 1 | |
| 69 | R366718 | 366716, 366718 | Latching Collar - Wheel | 2 | |
| 70 | R220317 | 220317 | Shifter Housing - Orange | 1 | |
| 71 | R250413 | 250413 | Screw - Set 3/8-16 x 1/2 | 4 | |
| 72 | R453011 | 453011 | Washer - Flat 3/8 SAE Y/Zinc | 2 | |
| 73 | R339910 | 339910 | O-Ring | 2 | |
| 74 | R343848 | 343848 | Spring | 4 | |
| 75 | R343850 | 343850 | Ball Bearing - 1/4 | 4 | |
| 76 | R366710 | 366710 | Cover | 1 | |
| 77 | R366715 | 366715 | Spacer | 2 | |
| 78 | R400112 | 400112, 400114 | Bolt - Hex HD 1/4-20 x 1-1/4 | 4 | |

All original equipment manufacturers names and part numbers are used for identification purposes only, and we are in no way implying that our products are original equipment parts. Prices subject to change without notice.



Replaces Jacobsen Greens King 518

Parts

Traction Unit

Drive Housing



| Item No | R&R Part No. | OEM Part No. | Description | Qty Req | Order Quantity |
|---------|-----------------|------------------------------|---------------------------|---------|----------------|
| 79 | R400196 | 400196 | Bolt - Hex HD 5/16-18 x 2 | 2 | |
| 80 | R503638 | 503638 | Belt Cover - Orange | 1 | |
| 81 | RA203603 | 366707, A203603 | Bearing | 1 | |
| 82 | R2811092 | 2811092 | Decal - Warning | 1 | |
| 83 | R3001792 | 3001792 | Decal - Reel Clutch | 1 | |
| 84 | R3000660 | 3000660 | Traction Clutch Lever | 1 | |
| 85 | R3004402 | 3004402 | Lever - Shifter Shaft | 1 | |
| 86 | R2811121 | 2811121 | Frame - LH | 1 | |
| 87 | R2809667 | 2809667 | Bracket - Idler - Spring | 1 | |
| 88 | R2809669 | 2809669 | Spring - Idler | 1 | |
| 89 | R3009434 | 3009434 | Bracket - Belt Adjusting | 1 | |
| 90 | R2500485 | 2500485 | Bolt - Hex HD 5/16-18 x 3 | 1 | |
| 91 | R3253-3 | 3253-3, 446128, 446130 | Washer - Lock 1/4 | 14 | |
| 92 | R3254-6 | 3254-6, 446140, 446142 | Washer - Lock 3/8 | 1 | |

All original equipment manufacturers names and part numbers are used for identification purposes only, and we are in no way implying that our products are original equipment parts. Prices subject to change without notice.