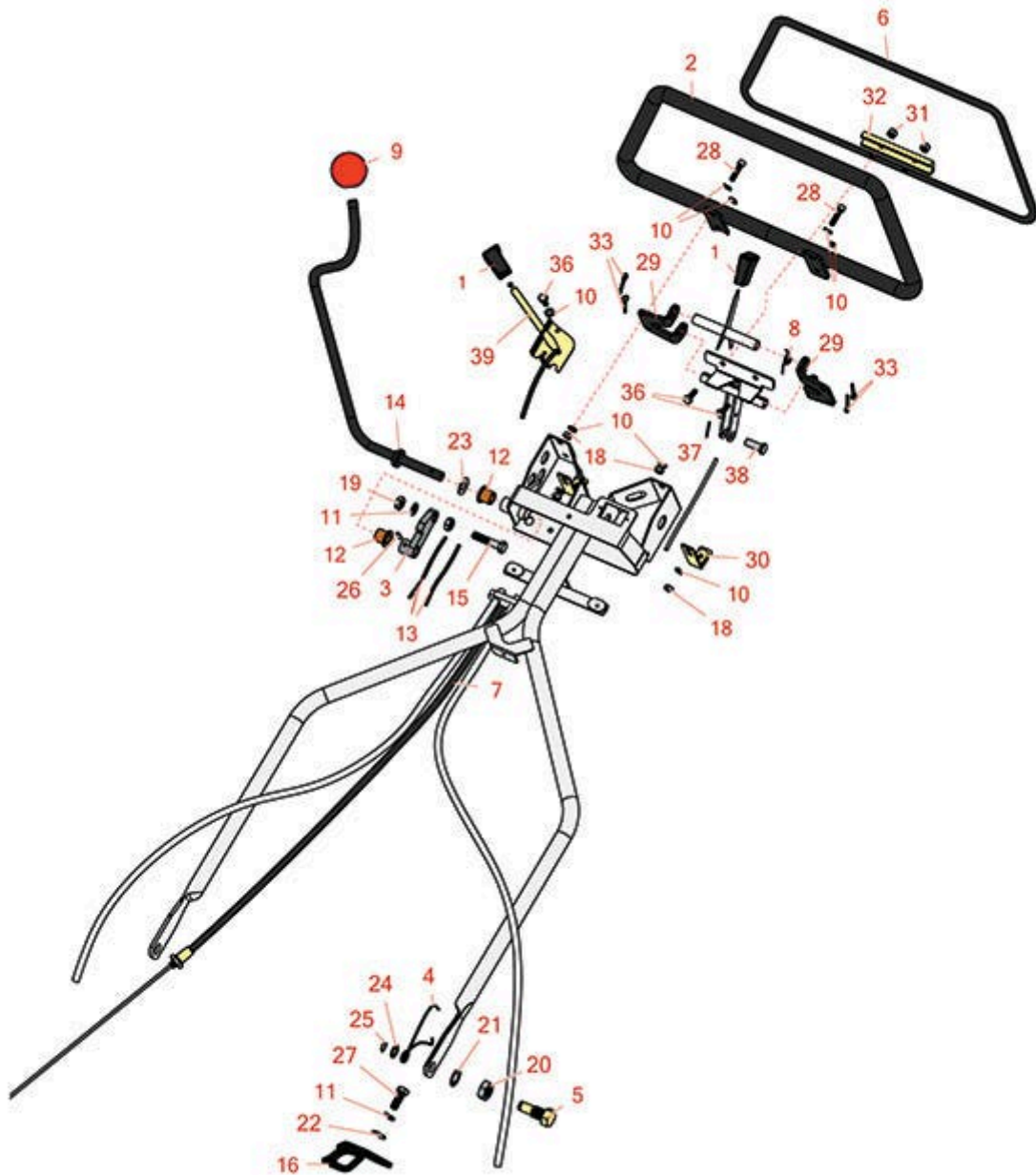




# Replaces Jacobsen Greens King 518

## Parts

Traction Unit  
Handle



All original equipment manufacturers names and part numbers are used for identification purposes only, and we are in no way implying that our products are original equipment parts. Prices subject to change without notice.



# Replaces Jacobsen Greens King 518

## Parts

*Traction Unit  
Handle*



Item No	R&R Part No.	OEM Part No.	Description	Qty Req	Order Quantity
1	<b>R366768</b>	366768	Knob - Black Rubber	2	
2	<b>R1001250</b>	1001250	Handle Loop	1	
3	<b>R2000067</b>	2000067	Lever - Brake Clutch	1	
4	<b>R2809900</b>	2809900	Spring - LH Torsion	1	
4	<b>R2809901</b>	2809901	Spring - RH Torsion	1	
5	<b>R2811559</b>	2811559	Bolt - Handle Mounting	2	
6	<b>R3002179</b>	3002179	Handle Loop	1	
7	<b>R3002477</b>	3002477	Cable - Clutch	1	
8	<b>R3002480</b>	3002480	Torsion Spring - Handle Latch	1	
9	<b>R101551</b>	3002001	Knob - Threaded Brake Handle	1	
10	<b>R3253-3</b>	3253-3, 446128, 446130	Washer - Lock 1/4	4	
11	<b>R3254-6</b>	3254-6, 446140, 446142	Washer - Lock 3/8	3	
12	<b>R366708</b>	366708	Bearing - Flanged	2	
13	<b>R101563</b>		Cable - Brake	2	
13	<b>R366741</b>	366741	Cable - Brake	2	
14	<b>R101550</b>	1000634	Handle - Brake - Threaded	1	
15	<b>R400268</b>	400268	Bolt - Hex HD 3/8-16 x 1-3/4	1	
16	<b>R4115960</b>	4115960	Stop - LH Handle	1	
16	<b>R4115961</b>	4115961	Stop - RH Handle	1	

All original equipment manufacturers names and part numbers are used for identification purposes only, and we are in no way implying that our products are original equipment parts. Prices subject to change without notice.



# Replaces Jacobsen Greens King 518

## Parts

Traction Unit  
Handle



Item No	R&R Part No.	OEM Part No.	Description	Qty Req	Order Quantity
18	<b>R443102</b>	443102	Nut - 1/4-20 Yellow Zinc	4	
19	<b>R443110</b>	306562, 443110, 444762	Nut - 3/8-16 Hex	2	
20	<b>R443828</b>	443828	Nut - 5/8-18 Hex	2	
21	<b>R447224</b>	447224	Washer - Lock 5/8 Int Star Z	2	
22	<b>R453011</b>	453011	Washer - Flat 3/8 SAE Y/Zinc	2	
23	<b>R454008</b>	454008	Spring Washer 1/2 x 3/4	1	
24	<b>R455012</b>	455012	Washer - Flat 1/2 x 3/4	2	
25	<b>R458006</b>	458006	Ring - Retaining	2	
26	<b>R461181</b>	461181	Grooved Pin - 3/16 x 3/4	1	
27	<b>RF3205</b>	400188, 400262	Bolt - Hex HD 3/8-16 x 1	2	
28	<b>R316796</b>	316796, 434029	Bolt - Allen HD 1/4-20 x 1	2	
29	<b>R3002047</b>	3002047	Bracket	2	
30	<b>R1001292</b>	1001292	Bracket - Handle Bar Cover	2	
31	<b>R32152-4</b>	32152-4, 444708	Locknut - 1/4-20 All Metal	2	
32	<b>R101553</b>	3004259	Channel - Loop	1	
33	<b>R460026</b>	460026	Pin - Cotter 1/8 x 3/4	4	
36	<b>R321-4</b>	321-4, 400108	Bolt - Hex HD 1/4-20 x 3/4	2	
37	<b>R1023-4</b>	460014	Pin - Cotter 3/32 x 3/4	1	
38	<b>R461462</b>	461462	Clevis Pin - 3/8 x 1 3/32	1	

All original equipment manufacturers names and part numbers are used for identification purposes only, and we are in no way implying that our products are original equipment parts. Prices subject to change without notice.



# Replaces Jacobsen Greens King 518

## Parts

*Traction Unit  
Handle*



Item No	R&R Part No.	OEM Part No.	Description	Qty Req	Order Quantity
39	<b>R366743</b>	366743	Throttle Control	1	

All original equipment manufacturers names and part numbers are used for identification purposes only, and we are in no way implying that our products are original equipment parts. Prices subject to change without notice.