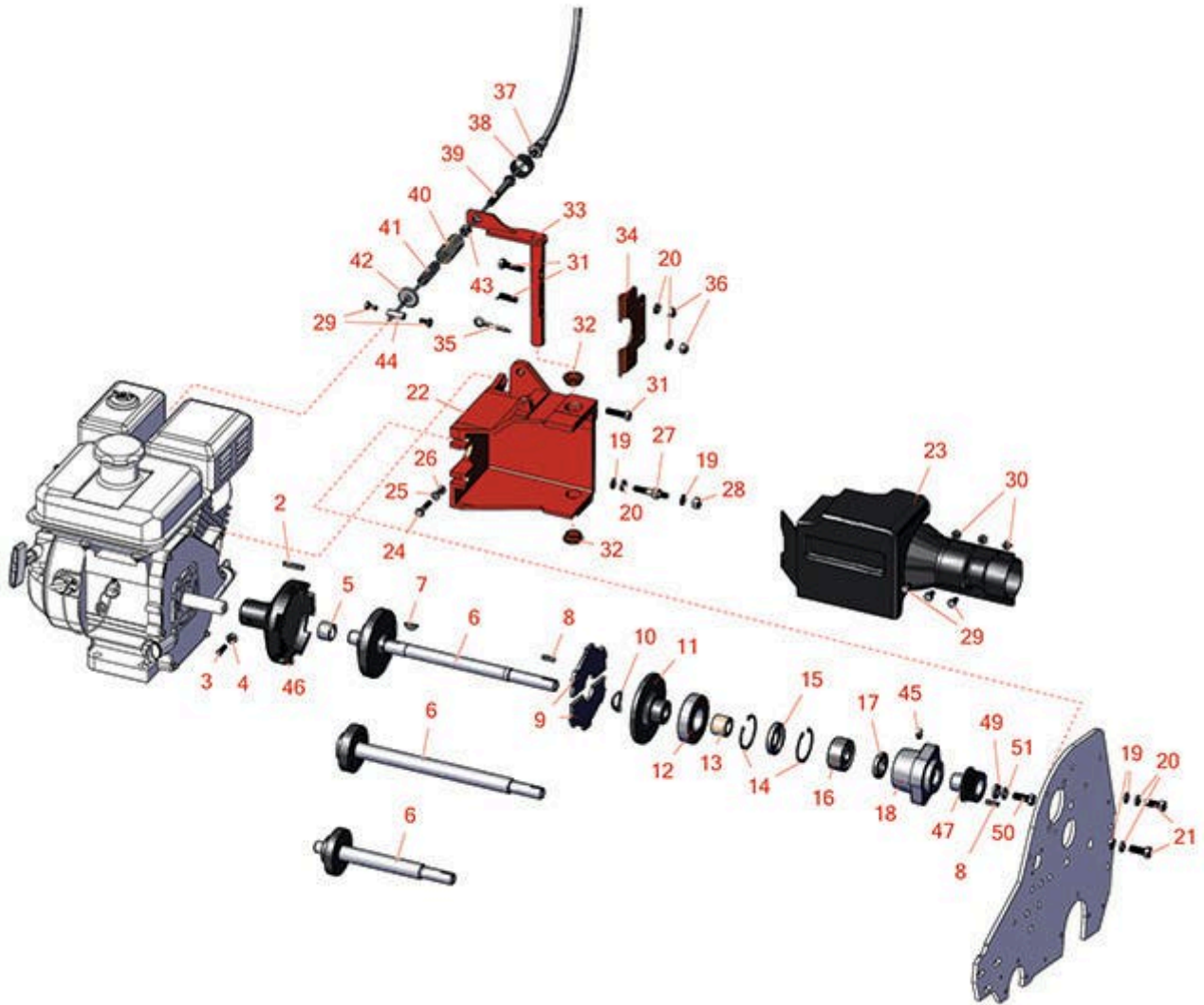




Replaces Jacobsen Greens King 518

Parts

Traction Unit
Clutch



All original equipment manufacturers names and part numbers are used for identification purposes only, and we are in no way implying that our products are original equipment parts. Prices subject to change without notice.



Replaces Jacobsen Greens King 518

Parts

Traction Unit
Clutch



| Item No | R&R Part No. | OEM Part No. | Description | Qty Req | Order Quantity |
|------------------------------|-----------------|-------------------|-------------------------------------|---------|----------------|
| Other Parts Available | | | | | |
| 2 | R320774 | 320774 | Key - Sq 3/16 x 1-1/4 | 1 | |
| 3 | R410503 | 410503 | Screw - Sq HD Set 5/16-18 x 7/8 | 1 | |
| 4 | R445502 | 445502 | Nut - 5/16-18 Pal Type R | 1 | |
| 5 | R3008993 | 3008993 | Bushing - Pilot | 1 | |
| 6 | R1000014 | 1000014 | Shaft - Clutch Fits 18 | 1 | |
| 6 | R1000842 | 1000842 | Shaft - Clutch Fits 22 | 1 | |
| 6 | R1000015 | 1000015 | Shaft - Clutch Fits 26 | 1 | |
| 6 | R4136652 | 4136652 | Shaft Assy - Clutch Plate - Fits 22 | 1 | |
| 6 | R4136651 | 4136651 | Shaft - Clutch Centrifugal Fits 18 | 1 | |
| 7 | R463113 | 463113 | Key - Reel Hi Pro | 1 | |
| 8 | R367082 | 367082 | Key - 3/16 Sq. x 3/4 | 1 | |
| 9 | R2501151 | 2501151 | Disc - Clutch (Set of 2) | 1 | |
| 10 | R366689 | 366689 | Washer - Washer Spring Steel | 1 | |
| 11 | R2000004 | 2000004 | Sliding Disc - Clutch | 1 | |
| 12 | R367365 | 367365 | Bearing | 1 | |
| 13 | R366686 | 366686 | Sleeve - Wear Clutch | 1 | |
| 14 | R458113 | 458113 | Ring - Snap Fits Groomer | 2 | |
| 15 | R366685 | 366685 | Seal | 1 | |
| 16 | R366684 | 366684 | Bearing | 1 | |
| 17 | R364170 | 364170, 366648 | Seal | 1 | |

All original equipment manufacturers names and part numbers are used for identification purposes only, and we are in no way implying that our products are original equipment parts. Prices subject to change without notice.



Replaces Jacobsen Greens King 518

Parts

Traction Unit
Clutch



| Item No | R&R Part No. | OEM Part No. | Description | Qty Req | Order Quantity |
|---------|-----------------|---|-------------------------------|---------|----------------|
| 18 | R241831 | 241831 | Bearing Housing - Clutch | 1 | |
| 19 | R364441 | 364441, 366641 | Washer - Flat 5/16x7/8 | 4 | |
| 19 | R453009 | 3256-23, 452004, 452006, 452008, 453009 | Washer - Flat 5/16 SAE | 4 | |
| 20 | R446136 | 446134, 446136 | Washer - Lock 5/16 Zinc | 4 | |
| 21 | R322-5 | 400188 | Bolt - Hex HD 5/16-18 x 1 | 2 | |
| 22 | R5002964 | 5002964 | Housing - Clutch | 1 | |
| 23 | R1003718 | 1003718 | Cover - Clutch | 1 | |
| 24 | R400112 | 400112, 400114 | Bolt - Hex HD 1/4-20 x 1-1/4 | 1 | |
| 25 | R3253-3 | 3253-3, 446128, 446130 | Washer - Lock 1/4 | 1 | |
| 26 | R443102 | 443102 | Nut - 1/4-20 Yellow Zinc | 1 | |
| 27 | R3004616 | 3004616 | Mounting Stud - Clutch Cover | 2 | |
| 28 | R444718 | 444718 | Nut - 5/16-18 Center Lock YZ | 2 | |
| 29 | R400104 | 400104 | Bolt - Hex HD 1/4-20 x 1/2 | 5 | |
| 30 | R32152-4 | 32152-4, 444708 | Locknut - 1/4-20 All Metal | 3 | |
| 31 | R400228 | 400228 | Bolt - Hex HD 5/16-24 x 1-1/4 | 2 | |
| 32 | R352726 | 352726 | Bushing - Bronze | 2 | |
| 33 | R132930 | 132930 | Clutch Arm Assy | 1 | |

All original equipment manufacturers names and part numbers are used for identification purposes only, and we are in no way implying that our products are original equipment parts. Prices subject to change without notice.



Replaces Jacobsen Greens King 518

Parts

*Traction Unit
Clutch*



| Item No | R&R Part No. | OEM Part No. | Description | Qty Req | Order Quantity |
|---------|-----------------|--|------------------------------------|---------|----------------|
| 34 | R3005380 | 3005380 | Clutch Fingers | 1 | |
| 35 | R460052 | 460052 | Pin - Cotter 3/16 x 1-1/2 | 1 | |
| 36 | R306320 | 306320 | Nut - 5/16-18 Hex YZ | 2 | |
| 37 | R3002477 | 3002477 | Cable - Clutch | 1 | |
| 38 | R3000966 | 3000966 | Spring | 1 | |
| 39 | R3000914 | 3000914 | Bolt - Special - Clutch | 1 | |
| 40 | R366800 | 366800 | Spring - Clutch | 1 | |
| 41 | R366799 | 366799 | Spring - Clutch | 1 | |
| 42 | R307456 | 307456 | Washer - Cupped | 1 | |
| 43 | R3219-3 | 3219-3, 443112, 443812 | Nut - 3/8-24 | 1 | |
| 44 | R366742 | 366742 | Pivot Pin w/Set Screw - Brake Band | 1 | |
| 45 | R302-5 | 302-5, 471214, 471223, 471226 | Fitting - Grease | 1 | |
| 46 | R132898 | 132898 | Clutch Body | 1 | |
| 47 | R3007847 | 3007847 | Pulley - 7 Rib Micro V | 1 | |
| 49 | R366653 | 366653 | Spacer | 1 | |
| 50 | RF3205 | 400188, 400262 | Bolt - Hex HD 3/8-16 x 1 | 1 | |
| 51 | R3254-6 | 3254-6, 446140, 446142 | Washer - Lock 3/8 | 1 | |

All original equipment manufacturers names and part numbers are used for identification purposes only, and we are in no way implying that our products are original equipment parts. Prices subject to change without notice.