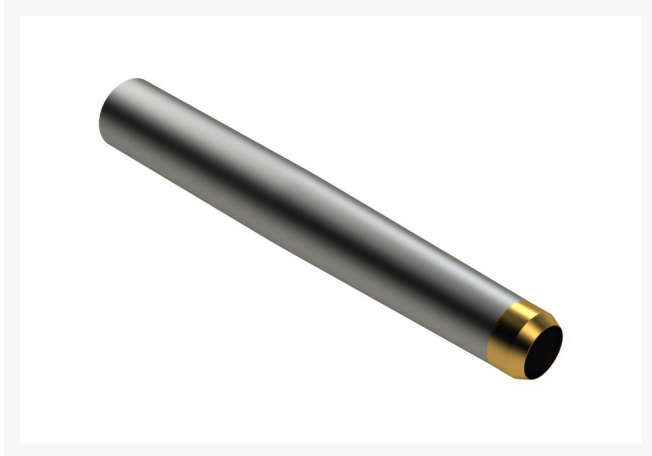




# Alloy Hollow Tine with Carbide Tip - .625MT x 4.500L x .510OD R201340



## Details

Carbide-Tipped Alloy Hollow Tine construction uses the same special high carbon alloy steel tubing and hardened to RC45-48 as the alloy hollow tines, with the addition of a carbide tip for even longer life. The advantage of using carbide-tipped tines is the ability to maintain your maximum aerating depth consistently over the life of the tines. You can expect these tines to last 6-8 times longer than the R&R Standard Hollow Tines. Carbide-tipped tines are not recommended in rocky soil conditions, as carbide, which is extremely wear resistant, can break when encountering hard impacts in rocks.

## Replaces

R&R Products R547132

## Specifications

Manufacturer	R&R Products
A - Tine Type	Alloy Hollow with Carbide Tip
B - Tine Mounting Dia.	.625 in (15.9mm)
C - Tine Length	4.5 in (114mm)
Carbide Tip	Carbide Tip
D - Tine Tip Outside (Hole) Dia.	.510 in (12.9mm)
E - Tine Tip Inside (Core) Dia.	.375 in (9.5mm)
F - Tine Wall Thickness	.049 in (1.2mm)

## Fits Models

Jacobsen GA-24  
Ryan Greensaire II

## Complete Turf Equipment Ltd.

4331 Oil Heritage Road Petrolia, N0N 1R0  
519-882-2008

<https://completeturf.rrproducts.com/>