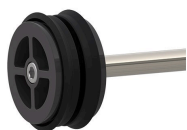




## Hand Pump Pro XL - 20"

RG7142



### Details

Quickly remove trapped water from large body sprinkler heads, valve boxes, clogged drains and low lying areas. Commercial grade PVC construction with a rigid anodized aluminum rod for durability. The suction piston is equipped with an O-ring seal and a threaded end cap making these pumps easy to disassemble, clean, then, reassemble. Includes 8" extension. Available in 10" pump chamber with 14 oz stroke or 20" pump chamber with 32 oz stroke.

- 32 oz. Stroke
- 20" Pump Chamber
- Thick PVC Construction
- Disassembles for Easy Cleaning
- Interchangeable Attachments
- 8" Extension Included

### Specifications

Manufacturer

R&R Products

**Complete Turf Equipment Ltd.**

4331 Oil Heritage Road Petrolia, N0N 1R0  
519-882-2008

<https://completeturf.rrproducts.com/>