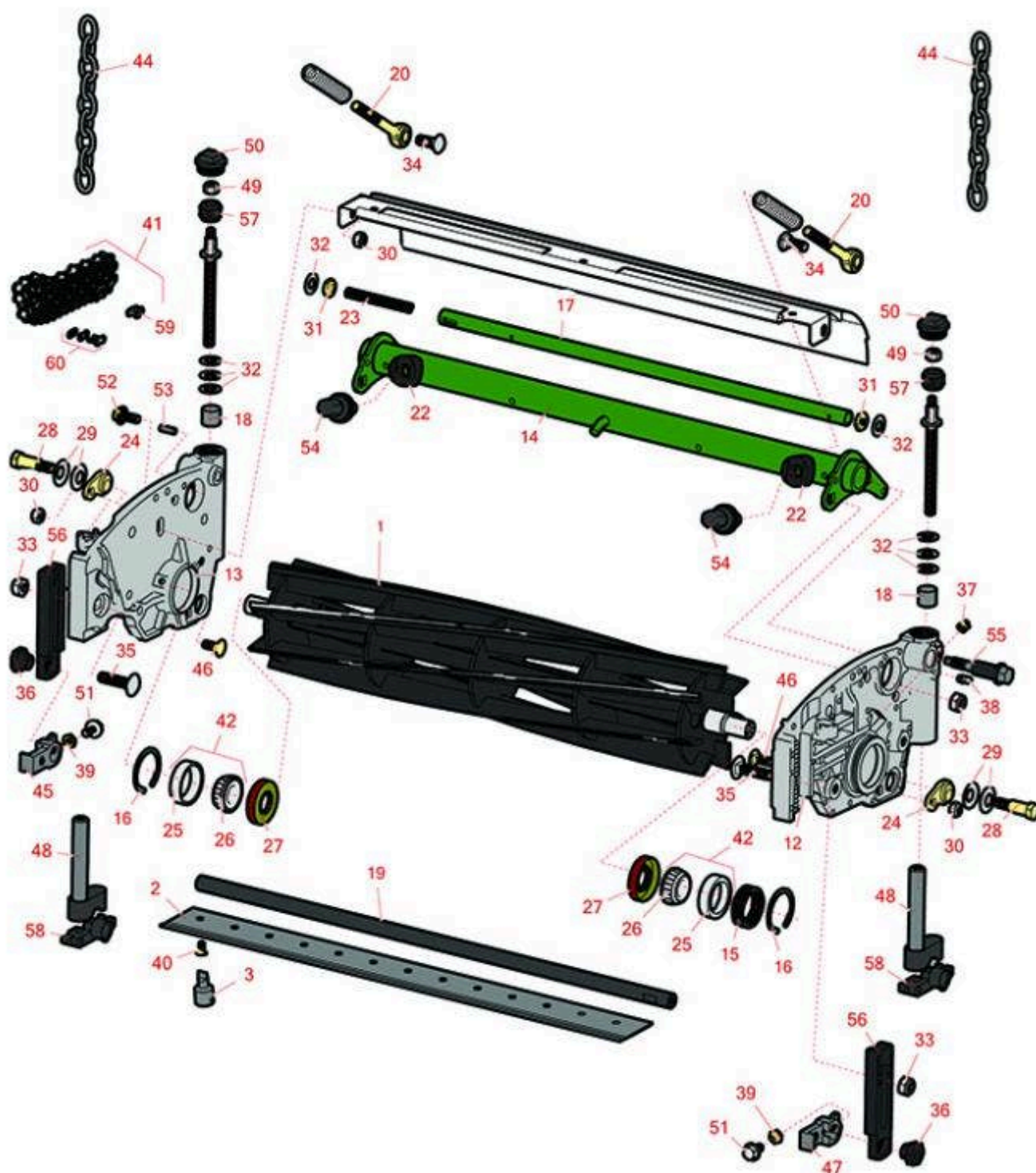




# Replaces John Deere 225 E-Cut Walking Greens Mower Parts

Cutting Unit  
Reel & Bedknife



All original equipment manufacturers names and part numbers are used for identification purposes only, and we are in no way implying that our products are original equipment parts. Prices subject to change without notice.



# Replaces John Deere 225 E-Cut Walking Greens Mower Parts

Cutting Unit  
Reel & Bedknife



| Item No | R&R Part No. | OEM Part No. | Description | Qty Req | Order Quantity |
|---------|--------------|--------------|-------------|---------|----------------|
|---------|--------------|--------------|-------------|---------|----------------|

## R&R Reels, Lifetime Guaranteed

|   |           |          |                |   |
|---|-----------|----------|----------------|---|
| 1 | RTCA19350 | TCA19350 | Reel - 7 Blade | 1 |
|---|-----------|----------|----------------|---|

*Detail Description: R&R Reel blades are expertly crafted from premium high carbon-boron alloy steel, heat-treated to perfectly complement both R&R and OEM bedknives. Each reel undergoes precision cylindrical grinding on bearing surfaces, followed by relief grinding for optimal performance. Advanced computer balancing ensures extended reel and bearing life. Backed by our lifetime guarantee against defects in materials and craftsmanship under normal use, R&R Reels deliver unmatched durability and cutting precision you can trust.:*

|   |         |          |                 |   |
|---|---------|----------|-----------------|---|
| 1 | R130250 | TCA23621 | Reel - 14 Blade | 1 |
|---|---------|----------|-----------------|---|

*Detail Description: R&R Reel blades are expertly crafted from premium high carbon-boron alloy steel, heat-treated to perfectly complement both R&R and OEM bedknives. Each reel undergoes precision cylindrical grinding on bearing surfaces, followed by relief grinding for optimal performance. Advanced computer balancing ensures extended reel and bearing life. Backed by our lifetime guarantee against defects in materials and craftsmanship under normal use, R&R Reels deliver unmatched durability and cutting precision you can trust.:*

|   |           |          |                 |   |
|---|-----------|----------|-----------------|---|
| 1 | RTCA19351 | TCA19351 | Reel - 11 Blade | 1 |
|---|-----------|----------|-----------------|---|

*Detail Description: R&R Reel blades are expertly crafted from premium high carbon-boron alloy steel, heat-treated to perfectly complement both R&R and OEM bedknives. Each reel undergoes precision cylindrical grinding on bearing surfaces, followed by relief grinding for optimal performance. Advanced computer balancing ensures extended reel and bearing life. Backed by our lifetime guarantee against defects in materials and craftsmanship under normal use, R&R Reels deliver unmatched durability and cutting precision you can trust.:*

|   |         |  |                                      |   |
|---|---------|--|--------------------------------------|---|
| 1 | R130239 |  | Reel - 9 Blade with Internal Splines | 1 |
|---|---------|--|--------------------------------------|---|

*Detail Description: R&R Reel blades are expertly crafted from premium high carbon-boron alloy steel, heat-treated to perfectly complement both R&R and OEM bedknives. Each reel undergoes precision cylindrical grinding on bearing surfaces, followed by relief grinding for optimal performance. Advanced computer balancing ensures extended reel and bearing life. Backed by our lifetime guarantee against defects in materials and craftsmanship under normal use, R&R Reels deliver unmatched durability and cutting precision you can trust.:*

## R&R Bedknives, Lifetime Guaranteed

|   |          |                     |                          |   |
|---|----------|---------------------|--------------------------|---|
| 2 | RET17767 | ET17767,<br>UC23562 | Bedknife - High Cut 5/16 | 1 |
|---|----------|---------------------|--------------------------|---|

All original equipment manufacturers names and part numbers are used for identification purposes only, and we are in no way implying that our products are original equipment parts. Prices subject to change without notice.



# Replaces John Deere 225 E-Cut Walking Greens Mower Parts

Cutting Unit  
Reel & Bedknife



| Item No | R&R Part No. | OEM Part No. | Description | Qty Req | Order Quantity |
|---------|--------------|--------------|-------------|---------|----------------|
|---------|--------------|--------------|-------------|---------|----------------|

*Detail Description: R&R Bedknives are manufactured from high carbon-boron alloy steel and then hardened to RC46-49 to match the temper of our reel blades and original equipment reels. Bedknives are surface ground on the top and front edge and straightened three times before being packaged with oil for rust prevention. All R&R Bedknives now have an increased front edge grind for added life. All R&R Bedknives are guaranteed against defects in material and workmanship under normal use for the life of the part.:*

|   |                 |   |  |   |  |
|---|-----------------|---|--|---|--|
| 2 | <b>RET17533</b> | ET14402,<br>ET17533,<br>ET17767,<br>MT4869,<br>MT7351,<br>UC18873 | Bedknife - 22in Standard-<br>.126 Min. HOC | 1 |  |
|---|-----------------|---|--|---|--|

*Detail Description: R&R Bedknives are manufactured from high carbon-boron alloy steel and then hardened to RC46-49 to match the temper of our reel blades and original equipment reels. Bedknives are surface ground on the top and front edge and straightened three times before being packaged with oil for rust prevention. All R&R Bedknives now have an increased front edge grind for added life. All R&R Bedknives are guaranteed against defects in material and workmanship under normal use for the life of the part.:*

|   |                |  |   |   |  |
|---|----------------|--|---|---|--|
| 2 | <b>RMT7351</b> | ET17489,<br>MT7351,<br>UC19154,<br>UC28163 | Bedknife - 22in Lo-Cut .079<br>Min. HOC | 1 |  |
|---|----------------|--|---|---|--|

*Detail Description: R&R Bedknives are manufactured from high carbon-boron alloy steel and then hardened to RC46-49 to match the temper of our reel blades and original equipment reels. Bedknives are surface ground on the top and front edge and straightened three times before being packaged with oil for rust prevention. All R&R Bedknives now have an increased front edge grind for added life. All R&R Bedknives are guaranteed against defects in material and workmanship under normal use for the life of the part.:*

## R&R Razor Tool Steel Bedknives, Lifetime Guaranteed

|   |                |  |  |   |  |
|---|----------------|--|--|---|--|
| 2 | <b>R130130</b> |  | Bedknife - Razor Tool Steel -<br>22 High Cut | 1 |  |
|---|----------------|--|--|---|--|

*Detail Description: R&R Razor bedknives are manufactured from premium alloy tool steel steel and then hardened to RC48-51 to match the temper of our Razor reel blades and original equipment premium series reels. Bedknives are surface ground on the top and front edge and specially packaged for rust prevention. All R&R Bedknives now have an increased front edge grind for added life. All R&R Bedknives are guaranteed against defects in material and workmanship under normal use for the life of the part. You can expect up to double the life over standard bedknives.:*

All original equipment manufacturers names and part numbers are used for identification purposes only, and we are in no way implying that our products are original equipment parts. Prices subject to change without notice.



# Replaces John Deere 225 E-Cut Walking Greens Mower Parts

Cutting Unit  
Reel & Bedknife



| Item No | R&R Part No. | OEM Part No. | Description | Qty Req | Order Quantity |
|---------|--------------|--------------|-------------|---------|----------------|
|---------|--------------|--------------|-------------|---------|----------------|

|   |         |  |  |   |  |
|---|---------|--|--|---|--|
| 2 | R130115 |  | Bedknife - Razor Tool Steel - 22 Micro Cut | 1 |  |
|---|---------|--|--|---|--|

*Detail Description: R&R Razor bedknives are manufactured from premium alloy tool steel steel and then hardened to RC48-51 to match the temper of our Razor reel blades and original equipment premium series reels. Bedknives are surface ground on the top and front edge and specially packaged for rust prevention. All R&R Bedknives now have an increased front edge grind for added life. All R&R Bedknives are guaranteed against defects in material and workmanship under normal use for the life of the part. You can expect up to double the life over standard bedknives.:*

|   |         |                    |   |   |  |
|---|---------|--------------------|---|---|--|
| 2 | R130116 | MT4846,<br>UC18877 | Bedknife - Razor Tool Steel - 22 Tournament Cut | 1 |  |
|---|---------|--------------------|---|---|--|

*Detail Description: R&R Razor bedknives are manufactured from premium alloy tool steel steel and then hardened to RC48-51 to match the temper of our Razor reel blades and original equipment premium series reels. Bedknives are surface ground on the top and front edge and specially packaged for rust prevention. All R&R Bedknives now have an increased front edge grind for added life. All R&R Bedknives are guaranteed against defects in material and workmanship under normal use for the life of the part. You can expect up to double the life over standard bedknives.:*

|   |          |          |   |   |  |
|---|----------|----------|---|---|--|
| 2 | RTC36165 | TCU36165 | Bed Knife - Razor Tool Steel 22 - Low Cut | 1 |  |
|---|----------|----------|---|---|--|

## Service Tools

|   |          |  |                            |   |  |
|---|----------|--|----------------------------|---|--|
| 3 | R101278T |  | Bedknife Screw Driver Tool | 1 |  |
|---|----------|--|----------------------------|---|--|

*Tech Note: Easily install and remove bed knife screws with the help of a ratchet. Tool manufactured with hardened alloy steel.:*

*Detail Description: Easily install and remove bed knife screws with the help of a ratchet. Tool manufactured with hardened alloy steel.:*

## Other Parts Available

|    |          |                       |            |   |  |
|----|----------|-----------------------|------------|---|--|
| 12 | RTC35637 | TCU24427,<br>TCU35637 | Panel - LH | 1 |  |
|----|----------|-----------------------|------------|---|--|

|    |          |                       |            |   |  |
|----|----------|-----------------------|------------|---|--|
| 13 | RTC35638 | TCU24426,<br>TCU35638 | Panel - RH | 1 |  |
|----|----------|-----------------------|------------|---|--|

|    |           |                       |       |   |  |
|----|-----------|-----------------------|-------|---|--|
| 14 | RAUC13891 | AUC13891,<br>TCA18291 | Frame | 1 |  |
|----|-----------|-----------------------|-------|---|--|

All original equipment manufacturers names and part numbers are used for identification purposes only, and we are in no way implying that our products are original equipment parts. Prices subject to change without notice.



# Replaces John Deere 225 E-Cut Walking Greens Mower Parts

Cutting Unit  
Reel & Bedknife



| Item No   | R&R Part No. | OEM Part No.          | Description                       | Qty Req | Order Quantity |
|---|--------------|-----------------------|-----------------------------------|---------|----------------|
| 15  | RTCU23880    | TCU23880,<br>TCU28964 | Compression Spring - Reel Bearing | 1       |                |
| 16  | R40M7226     | 40M1862,<br>40M7226   | Ring - Retaining                  | 2       |                |
| 17  | RTCU26729    | TCU26729              | Tube                              | 1       |                |
| 18  | RMT74        | MT74                  | Bushing - Roller Bkt              | 2       |                |
| 19  | RUC13425     | UC13425               | Rod - Hardened                    | 1       |                |
| 20  | RTCU25223    | TCU25223,<br>TCU30798 | Spherical Rod End                 | 2       |                |
| 22  | RTCU25394    | TCU25394,<br>TCU27453 | Base                              | 2       |                |
| 23  | RTCU25398    | TCU25398              | Compression Spring                | 1       |                |
| 24  | RTCU24334    | TCU24334              | Retainer                          | 2       |                |
| 25  | R254-79      | JD8226                | Cup - Bearing                     | 2       |                |
| <i>Detail Description: Use R254-79M installation mandrel to properly install race.:</i> |              |                       |                                   |         |                |
| 26  | R254-78      | JD8188                | Tapered Bearing Cone              | 2       |                |
| 27  | RET14566     | ET14566               | Seal - Reel                       | 2       |                |
| 28  | RMT3016      | MT3016                | Bolt - Bed Bar                    | 2       |                |
| 29  | RN168012     | N168012               | Washer - Spring                   | 4       |                |
| 30  | RH137328     | H137328               | Locknut                           | 4       |                |
| 31  | R14M7152     | 14M7152               | Nut - 10mm x 1.5 Jam              | 2       |                |
| 32  | RET16679     | ET16679               | Washer - Spring                   | 8       |                |
| 33  | R14M7517     | 14M7517               | Locknut - 10mm x 1.5 ESNA         | 4       |                |
| 34  | R03M7191     | 03M7191               | Bolt - Carriage M10 x 25          | 4       |                |

All original equipment manufacturers names and part numbers are used for identification purposes only, and we are in no way implying that our products are original equipment parts. Prices subject to change without notice.





# Replaces John Deere 225 E-Cut Walking Greens Mower Parts

Cutting Unit  
Reel & Bedknife



| Item No   | R&R Part No. | OEM Part No.                 | Description                     | Qty Req | Order Quantity |
|---|--------------|------------------------------|---------------------------------|---------|----------------|
| 35  | R03M7194     | 03M7194                      | Bolt                            | 2       |                |
| 36  | RTC28635     | TCU24555,<br>TCU28635        | Eccentric                       | 2       |                |
| 37  | R170714      | E14814                       | Fitting - Pressure Relief       | 2       |                |
| 38  | R302-5       | JD7797,<br>JD7842,<br>JD7844 | Fitting - Grease                | 2       |                |
| 39  | R14M7151     | 14M7151                      | Nut - Jam Roller Adj            | 2       |                |
| 40  | R101278      | 21M7194                      | Screw - Bedknife                | 13      |                |
| 41  | RTCA16595    | TCA16595                     | Chain - Rear Roller             | 1       |                |
| 42  | R500534      |                              | Bearing - with Cup              | 2       |                |
| <i>Detail Description: Kit includes: 1 ea R254-78- Bearing Cone &amp; R254-79 Bearing Cone:</i> |              |                              |                                 |         |                |
| 44  | RAMT1479     | AMT1479                      | Chain - Link                    | 2       |                |
| 45  | RUC16109     | TCU24461,<br>UC16109         | Bracket - RH                    | 1       |                |
| 46  | R03M7184     | 03M7184                      | Bolt - Carriage M8              | 2       |                |
| 47  | RUC18211     | TCU24461,<br>UC18211         | Bracket - LH                    | 1       |                |
| 48  | RAUC13512    | AUC13512,<br>TCA18706        | Adjuster                        | 2       |                |
| 49  | RM148268     | M148268                      | Lock Nut                        | 2       |                |
| 50  | RUC16102     | TCU24949,<br>UC16102         | Cap                             | 2       |                |
| 51  | R33114-016   | 19M7162                      | Bolt - Hx HD 8mm x 1.25 x 15    | 2       |                |
| 52  | R19M7866     | 19M7866                      | Bolt - Flanged Hex M8-1.25 x 20 | 2       |                |

All original equipment manufacturers names and part numbers are used for identification purposes only, and we are in no way implying that our products are original equipment parts. Prices subject to change without notice.



# Replaces John Deere 225 E-Cut Walking Greens Mower Parts

*Cutting Unit  
Reel & Bedknife*



| Item No | R&R Part No.     | OEM Part No.          | Description                 | Qty Req | Order Quantity |
|---------|------------------|-----------------------|-----------------------------|---------|----------------|
| 53      | <b>RR30587</b>   | 30587,<br>R30587      | Pin - Dowell 1/4 Dia. x .75 | 4       |                |
| 54      | <b>RUC16137</b>  | TCU24955,<br>UC16137  | Adjuster                    | 2       |                |
| 55      | <b>RTC26458</b>  | TCU26458              | Worm Gear                   | 2       |                |
| 56      | <b>RUC16108</b>  | TCU24460,<br>UC16108  | Bracket                     | 2       |                |
| 57      | <b>RTC40491</b>  | TCU24683,<br>TCU40491 | Worm Gear                   | 2       |                |
| 58      | <b>RUC22218</b>  | UC22218               | Half Clamp                  | 2       |                |
| 59      | <b>RSW35OLUS</b> | SW35OLUS              | Chain Link - Offset #35     | 0       |                |
| 60      | <b>RSW35COUS</b> | SW35COUS              | Chain Link - Coupler #35    | 0       |                |

All original equipment manufacturers names and part numbers are used for identification purposes only, and we are in no way implying that our products are original equipment parts. Prices subject to change without notice.