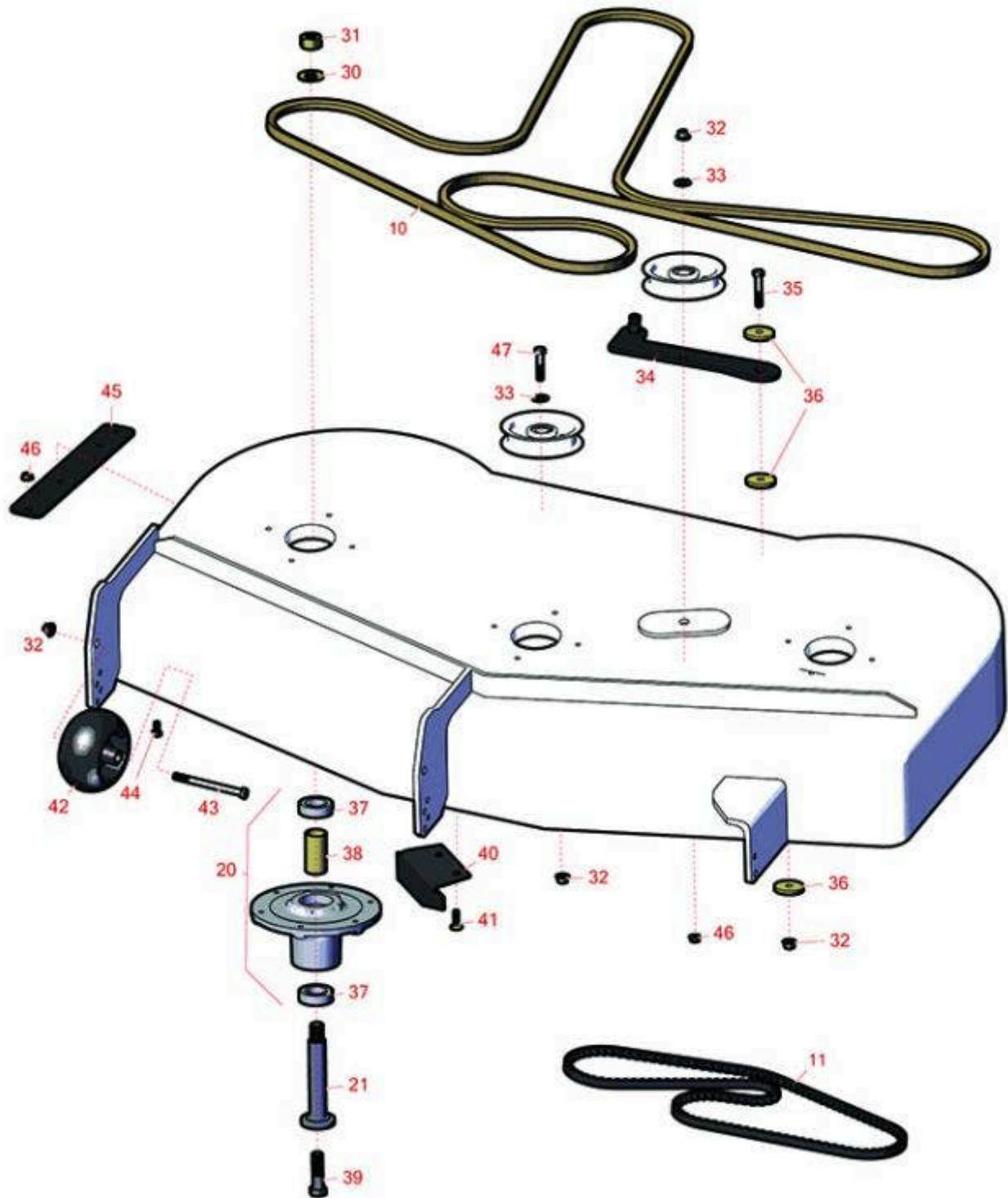




# Replaces Toro Titan MR 5400 Parts

Zero Turn Mower with 54in Deck - Model 75315

54in Rotary Deck



All original equipment manufacturers names and part numbers are used for identification purposes only, and we are in no way implying that our products are original equipment parts. Prices subject to change without notice.



# Replaces Toro Titan MR 5400 Parts

Zero Turn Mower with 54in Deck - Model 75315

54in Rotary Deck



Item No	R&R Part No.	OEM Part No.	Description	Qty Req	Order Quantity
<b>Belts &amp; Pullies</b>					
10	<b>R133-7076</b>	133-7076	Belt - V	1	
11	<b>R133-4371</b>	133-4371	Belt - V - Cogged	1	
<b>Spindles</b>					
20	<b>R139-2357</b>	120-5477, 139-2357	Spindle Assy	3	
21	<b>R115-2642</b>	115-2642	Shaft- Spindle	3	
<b>Other Parts Available</b>					
30	<b>R7-4150</b>	7-4150	Washer	3	
31	<b>R3219-7</b>	01-158-0600, 01-188-1216, 215-46, 22-18-BJC, 3219-7	Nut- 3/4-16 GR8 Hex	3	
32	<b>R104-8301</b>	104-8301, 104-9301, 109-6658, 133-7570	Locknut - 3/8-16 Nylon Flanged	6	
33	<b>R80-6990</b>	104-1050, 80-6990	Washer - Hardened	3	
34	<b>R138-7226</b>	138-7226	Idler Arm Assy	1	
35	<b>R323-10</b>	01-150-0680, 01-178-0616, 100-6663, 100-8320, 1489, 20-51-AD, 20-51-AGD, 3224-6, 323-10, 323-35, 908336	Bolt - Hex HD 3/8-16 x 2	1	
36	<b>R110-9981</b>	110-9981	Washer-Plain	3	

All original equipment manufacturers names and part numbers are used for identification purposes only, and we are in no way implying that our products are original equipment parts. Prices subject to change without notice.



# Replaces Toro Titan MR 5400 Parts

Zero Turn Mower with 54in Deck - Model 75315

54in Rotary Deck



Item No	R&R Part No.	OEM Part No.	Description	Qty Req	Order Quantity
37	<b>R116-0720</b>	116-0720	Bearing - Ball - Special Triple Seal	2	
38	<b>R138-7220</b>	138-7220	Spacer - Bearing	1	
39	<b>R51-4060</b>	51-4060	Bolt - Blade	3	
40	<b>R115-9653-03</b>	115-9653-03	Baffle - Cutoff	1	
41	<b>R3230-22</b>	3230-22, R3230-22	Bolt - Carriage 5/16-18 x 1	2	
42	<b>R68-2730</b>	1-603299, 68-2730	Wheel - Anti Scalp	3	
43	<b>R323-23</b>	01-150-0810, 01-178-0636, 20-60-AGD, 323-23	Bolt - Hex HD 3/8-16 x 4-1/2	3	
44	<b>R322-2</b>	322-2, 513338P	Bolt - Hex HD 5/16-18 x 5/8	5	
45	<b>R115-5048-03</b>	115-5048-03	Plate - Deflector	1	
46	<b>R104-8300</b>	104-8300, 104-8300 , 119-4041	Locknut - 5/16-18 Flanged Y/Zinc	7	
47	<b>R323-9</b>	01-150-0190, 01-150-1540, 01-178-0614, 107229, 20-50-AD, 20-50-AGD, 30-9430, 32105-4, 3224-5, 323-9, 513363, 513364, 5377, 908037P	Bolt - Hex HD 3/8-16 x 1-3/4	3	

All original equipment manufacturers names and part numbers are used for identification purposes only, and we are in no way implying that our products are original equipment parts. Prices subject to change without notice.