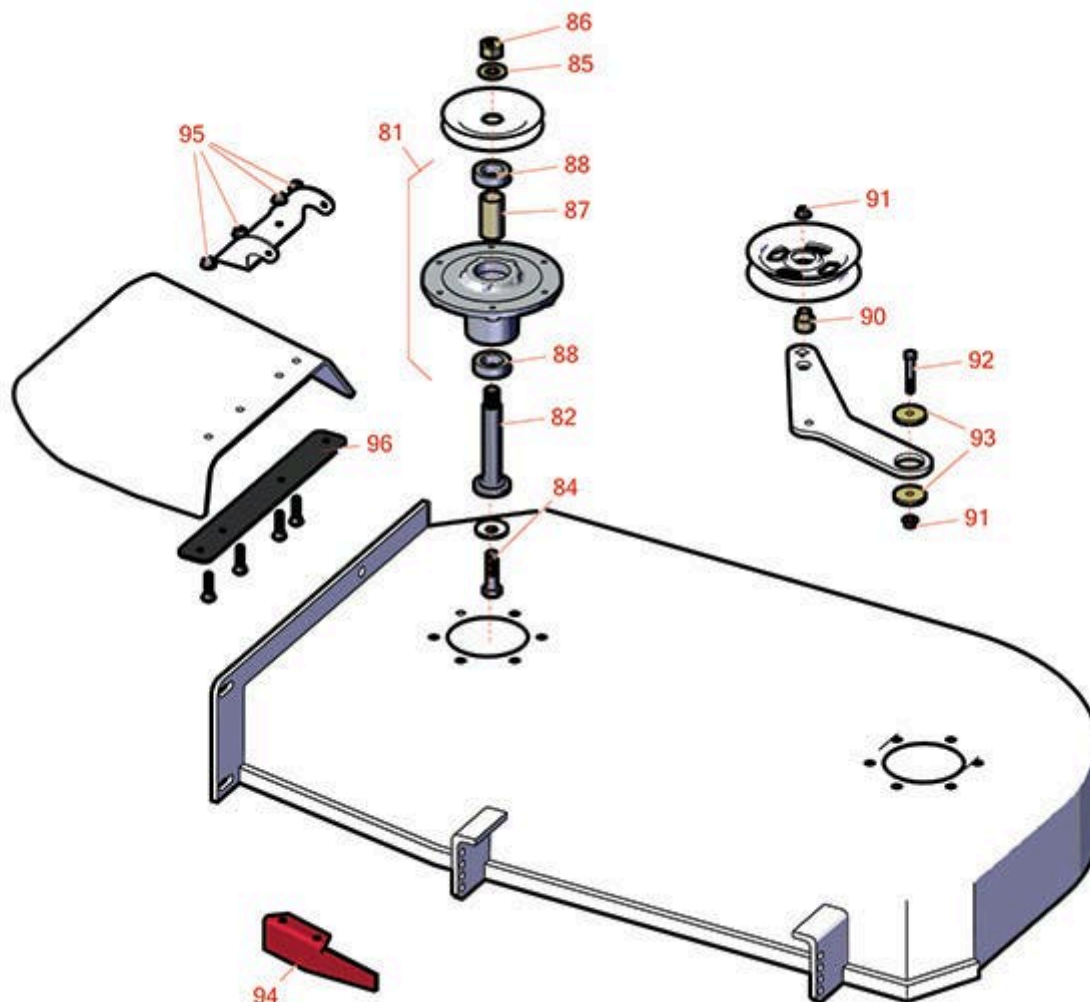




# Replaces Toro Proline Commercial Walk-Behind Mower Parts

Mower with 36in Floating Cutting Unit - 44409, 44410, 44436  
Deck Parts



All original equipment manufacturers names and part numbers are used for identification purposes only, and we are in no way implying that our products are original equipment parts. Prices subject to change without notice.



# Replaces Toro Proline Commercial Walk-Behind Mower Parts

Mower with 36in Floating Cutting Unit - 44409, 44410, 44436  
Deck Parts



Item No	R&R Part No.	OEM Part No.	Description	Qty Req	Order Quantity
<b>Other Parts Available</b>					
81	<b>R139-2357</b>	120-5477, 139-2357	Spindle Assy	2	
82	<b>R115-2642</b>	115-2642	Shaft- Spindle	2	
84	<b>R51-4060</b>	51-4060	Bolt - Blade	2	
85	<b>R7-4150</b>	7-4150	Washer	2	
86	<b>R3219-7</b>	01-158-0600, 01-188-1216, 215-46, 22-18-BJC, 3219-7	Nut- 3/4-16 GR8 Hex	2	
87	<b>R138-7220</b>	138-7220	Spacer - Bearing	2	
88	<b>R116-0720</b>	116-0720	Bearing - Ball - Special Triple Seal	4	
90	<b>R138-7227</b>	138-7227	Bushing - Idler	1	
91	<b>R104-8301</b>	104-8301, 104-9301, 109-6658, 133-7570	Locknut - 3/8-16 Nylon Flanged	13	
92	<b>R323-11</b>	01-150-1440, 01-178-0618, 20-52-AD, 3224-7, 323-11	Bolt - 3/8-16 x 2 1/4 GR5	1	
93	<b>R110-9981</b>	110-9981	Washer-Plain	3	
94	<b>R110-0754-01</b>	110-0754-01	Baffle - Discharge	1	
95	<b>R104-8300</b>	104-8300, 104-8300 , 119-4041	Locknut - 5/16-18 Flanged Y/Zinc	11	
96	<b>R115-5048-03</b>	115-5048-03	Plate - Deflector	1	

All original equipment manufacturers names and part numbers are used for identification purposes only, and we are in no way implying that our products are original equipment parts. Prices subject to change without notice.



# Replaces Toro Proline Commercial Walk-Behind Mower Parts



Mower with 36in Floating Cutting Unit - 44409, 44410, 44436  
Deck Parts

Item No	R&R Part No.	OEM Part No.	Description	Qty Req	Order Quantity
---------	--------------	--------------	-------------	---------	----------------

*Tech Note: Model 44436 Only:*

All original equipment manufacturers names and part numbers are used for identification purposes only, and we are in no way implying that our products are original equipment parts. Prices subject to change without notice.