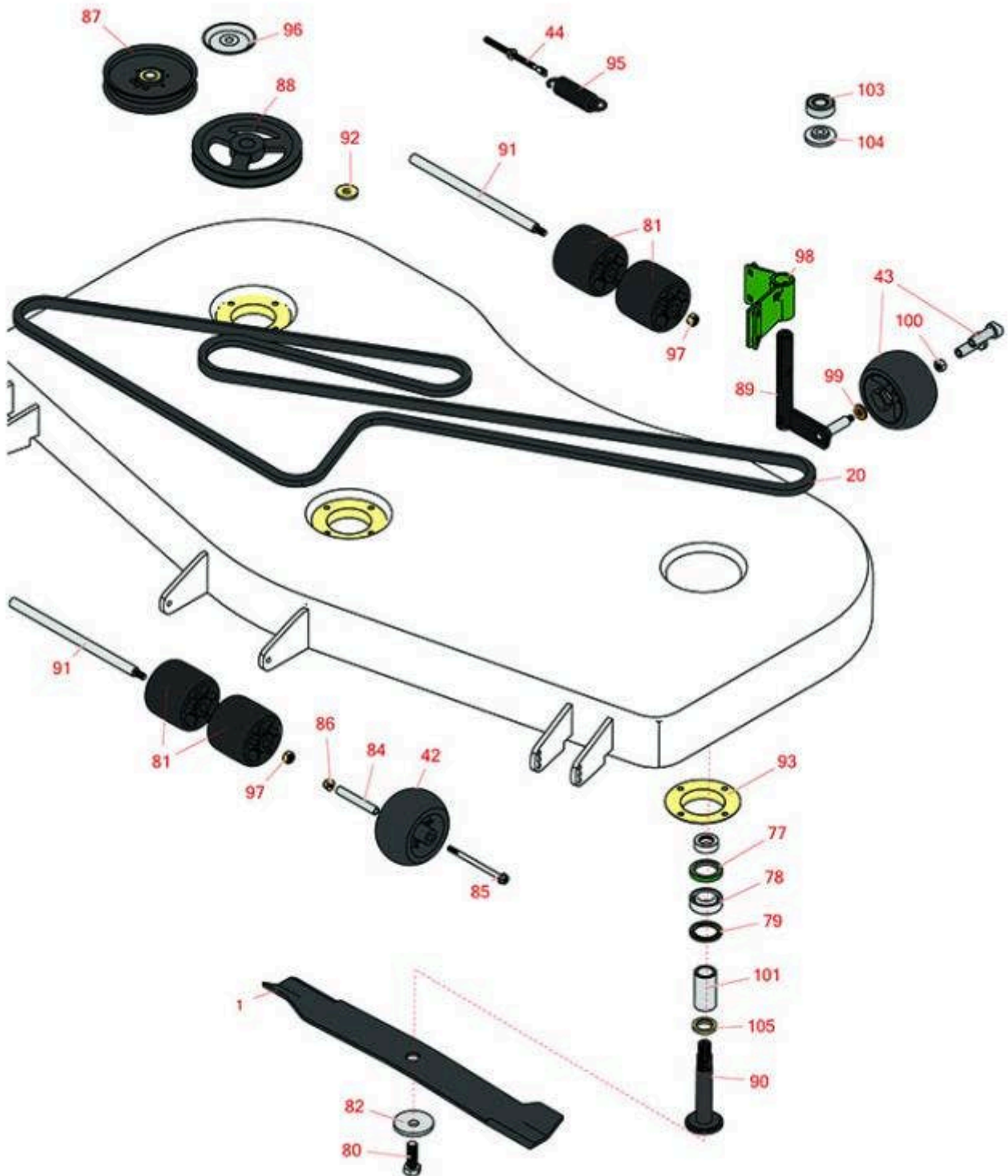




# Replaces John Deere 1420 Rotary Mower Parts

62in & 72in Side & Rear Discharge Deck - Models 2814  
60in Deck Parts



All original equipment manufacturers names and part numbers are used for identification purposes only, and we are in no way implying that our products are original equipment parts. Prices subject to change without notice.



# Replaces John Deere 1420 Rotary Mower Parts

62in & 72in Side & Rear Discharge Deck - Models 2814  
60in Deck Parts



Item No	R&R Part No.	OEM Part No.	Description	Qty Req	Order Quantity
---------	--------------	--------------	-------------	---------	----------------

## Rotary Blades

1	<b>RTC15882</b>	M143749, TCU15882	Mower Blade - High Lift - 25 x 3 x 1/4 w/.910 Hole	3	
---	-----------------	----------------------	--	---	--

*Tech Note: Fits Model 2814:*

1	<b>RTC15882M</b>		Mower Blade - Mulching - 25 x 3 x 1/4 w/.910 Hole	3	
---	------------------	--	---	---	--

*Tech Note: Fits Model 2814:*

## Belts

20	<b>RTC19900</b>	TCU19900	Belt - V - Fits 72 in Decks	1	
----	-----------------	----------	-----------------------------	---	--

*Tech Note: Fits Model 2814 Only:*

20	<b>RTC19067</b>	TCU19067	V-Belt - (Export Road Homologation) (Use with TCA15323)	1	
----	-----------------	----------	---	---	--

20	<b>RTC13402</b>	TCU13402	V-Belt - (Export)	1	
----	-----------------	----------	-------------------	---	--

## Other Parts Available

42	<b>RTC18744</b>	TCU18744, UC28193	Wheel - 5 in x 2 3/4	2	
----	-----------------	----------------------	----------------------	---	--

43	<b>RAM125172</b>	AM125172	Wheel Kit - Gage Wheel	1	
----	------------------	----------	------------------------	---	--

44	<b>RM141764</b>	M141764	Eyebolt - Includes Flanged Locknut	1	
----	-----------------	---------	------------------------------------	---	--

77	<b>R253-133</b>	M85699	Seal - Oil	3	
----	-----------------	--------	------------	---	--

78	<b>RM88251</b>	M169375, M88251	Bearing - Spindle	6	
----	----------------	--------------------	-------------------	---	--

79	<b>RM127198</b>	M127198	Seal	3	
----	-----------------	---------	------	---	--

80	<b>R19M7489</b>	19M7489	Bolt Hex HD - M16 x 45 Gr 10.9	3	
----	-----------------	---------	--------------------------------	---	--

81	<b>RM115245</b>	M115245	Roller	4	
----	-----------------	---------	--------	---	--

82	<b>RM123522</b>	M123522	Washer - Belleville - Blade Bolt	3	
----	-----------------	---------	----------------------------------	---	--

All original equipment manufacturers names and part numbers are used for identification purposes only, and we are in no way implying that our products are original equipment parts. Prices subject to change without notice.



# Replaces John Deere 1420 Rotary Mower Parts

62in & 72in Side & Rear Discharge Deck - Models 2814  
60in Deck Parts



Item No	R&R Part No.	OEM Part No.	Description	Qty Req	Order Quantity
84	<b>RTC19299</b>	TCU19299	Axle Bushing	2	
85	<b>R19M8006</b>	19M8006	Bolt - M8-1.25 x 120 Hx HD Fl Cl 10.9	2	
86	<b>R14M7396</b>	14M7396	Locknut - Flanged Nyloc	2	
87	<b>RTCA17524</b>	TCA17524	Idler Pulley - 5 in Flat Dia with .75 in Brg ID	2	
88	<b>RM141695</b>	M141695	Idler - North America (Replaces M112398)	1	
89	<b>RAM129501</b>	AM129501	Arm	1	
90	<b>RM134382</b>	M134382	Spindle - 25 mm w/M12-1.75 Blade Bolt Thrd	3	
91	<b>RM110057</b>	M110057	Shaft - Roller	2	
92	<b>R24M7226</b>	24M7226	Washer - 13 x 35 x 5 mm	1	
93	<b>RTC51223</b>	TCU51223	Deflector - Grass	3	
95	<b>RM136044</b>	M136044	Spring - Extension	1	
96	<b>RM133598</b>	M133598	Shield	2	
97	<b>R14M7400</b>	14M7400	Locknut - 10mm	3	
98	<b>RTCA13570</b>	TCA13570	Bracket	1	
99	<b>R24H1308</b>	24H1308	Washer	1	
100	<b>R14M7167</b>	14M7167	Nut - M10-1.5 Lock Nylon Insert	1	
101	<b>RM163058</b>	M127517, M163058	Bushing - Sub For M127517	3	
103	<b>R93-2559</b>	TCU23201	Bearing	2	
104	<b>RM132309</b>	M132309	Spacer	2	
105	<b>RM163060</b>	M133398, M163060	Washer - Replaces RM133398	3	

All original equipment manufacturers names and part numbers are used for identification purposes only, and we are in no way implying that our products are original equipment parts. Prices subject to change without notice.