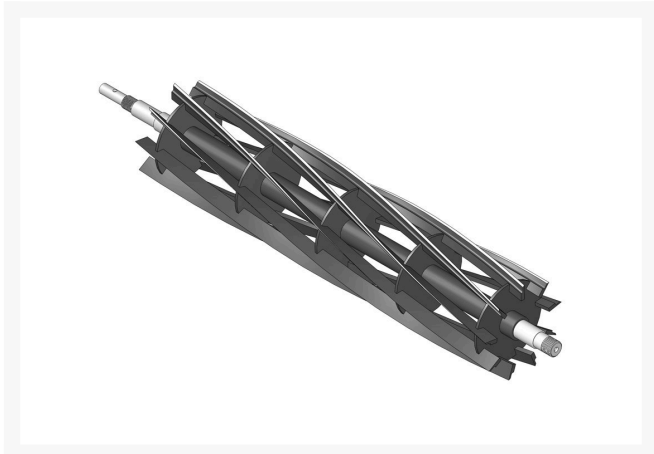




# Reel - 9 Blade LH

R502767



### Details

R&R Reel blades are manufactured from high carbon-boron alloy steel and then hardened to RC46-49 to match the temper of our bedknives and original equipment bedknives. All R&R Reels are cylindrically ground on bearing surfaces and then relief ground. Reels are then precision computer balanced for extended bearing and reel life. R&R Products Reels are guaranteed against defects in material and workmanship for the life of the reel under normal use.

- High Carbon-Boron Alloy Steel
- Cylindrically Ground on Bearing Surfaces
- Precision Computer Balanced

### Replaces

Jacobsen	502767
R&R Products	R121517

### Specifications

Manufacturer	R&R Products
--------------	--------------

### Fits Models

Jacobsen Greens King II